

Anti-NOD1 Antibody

Catalog Number: A00495

About NOD1

NOD1 is a member of the NOD (nucleotide-binding oligomerization domain) family, a group of proteins that are involved in innate immune defense. NOD1 contains an N-terminal caspase recruitment domain (CARD), a centrally located nucleotide-binding domain (NBD), and ten tandem leucine-rich repeats (LRRs) in its C-terminus. The CARD is involved in apoptotic signaling, and NOD1 activates caspase-9 and NF-kappaB. LRRs participate in protein-protein interactions, and mutations in the NBD may affect the process of oligomerization and subsequent function of the LRR domain. This protein is an intracellular pattern-recognition receptor (PRR) that initiates inflammation in response to a subset of bacteria through the detection of bacterial diaminopimelic acid.

Overview

Product Name	Anti-NOD1 Antibody
Reactive Species	Human, Mouse, Rat
Description	Boster Bio Anti-NOD1 Antibody (Catalog # A00495). Tested in ELISA, WB applications. This antibody reacts with Human, Mouse, Rat.
Application	ELISA, WB
Clonality	Polyclonal
Formulation	NOD1 Antibody is supplied in PBS containing 0.02% sodium azide.
Storage Instructions	NOD1 antibody can be stored at 4°C for three months and -20°C, stable for up to one year. Avoid repeated freeze-thaw cycles. Antibodies should not be exposed to prolonged high temperatures.
Host	Rabbit
Uniprot ID	Q9Y239

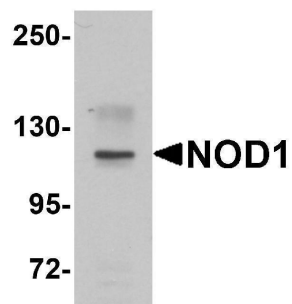
Technical Details

Immunogen	NOD1 antibody was raised against a 16 amino acid synthetic peptide near the carboxy end of human NOD1. The immunogen is located within the last 50 amino acids of NOD1.
Predicted Reactive Species	Bovine, Pig
Isotype	IgG
Form	Liquid
Concentration	1 mg/mL
Purification	NOD1 Antibody is affinity chromatography purified via peptide column.

Suggested Dilutions

NOD1 antibody can be used for detection of NOD1 by Western blot at 1 ug/mL.
Antibody validated: Western Blot in mouse samples. All other applications and species not yet tested. Optimal dilutions for each application should be determined by the researcher.

Anti-NOD1 Antibody (A00495) Images



Western blot analysis of NOD1 in EL4 cell lysate with NOD1 antibody at 1 ug/mL.

Submit a product review to Biocompare.com

Submit a review of this product to Biocompare.com to receive a \$20 Amazon.com giftcard! Your reviews help your fellow scientists make the right decisions. Thank you for your contribution.



Anti-NOD1 Antibody

For Research Use Only. Not for use in diagnostic procedures.