

Anti-SF2 SRSF1 Antibody

Catalog Number: A00497

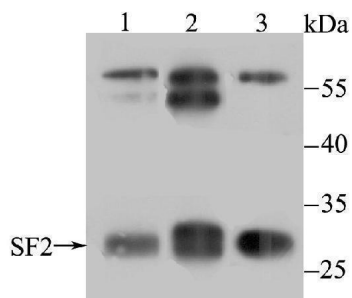
Overview

Product Name	Anti-SF2 SRSF1 Antibody
Reactive Species	Human, Mouse, Rat
Description	Boster Bio Anti-SF2 SRSF1 Antibody catalog # A00497. Tested in WB,ICC,IF,IHC,Flow Cytometry applications. This antibody reacts with Human,Mouse,Rat.
Application	Flow Cytometry, IF, IHC, ICC, WB
Clonality	Polyclonal
Formulation	Rabbit IgG, 1mg/ml in PBS with 0.02% sodium azide, 50% glycerol, pH7.2
Storage Instructions	Store at -20°C for one year. For short term storage and frequent use, store at 4°C for up to one month. Avoid repeated freeze-thaw cycles.
Host	Rabbit
Uniprot ID	Q07955

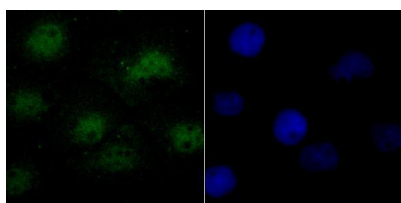
Technical Details

Immunogen	Recombinant protein
Isotype	IgG
Form	Liquid
Concentration	1 mg/ml
Purification	ProA affinity purified
Suggested Dilutions	WB: 1:500-1:1,000 ICC: 1:50 IHC: 1:50-1:200 FC: 1:50-1:100

Anti-SF2 SRSF1 Antibody (A00497) Images



Western blot analysis of SF2 on different lysates using anti-SF2 antibody at 1/500 dilution. Positive control: Lane 1: Mouse heart Lane 2: Mouse liver Lane 3: K562



ICC staining SF2 in A431 cells (green). The nuclear counter stain is DAPI (blue). Cells were fixed in paraformaldehyde, permeabilised with 0.25% Triton X100/PBS.

Submit a product review to Biocompare.com

Submit a review of this product to Biocompare.com to receive a \$20 Amazon.com giftcard! Your reviews help your fellow scientists make the right decisions. Thank you for your contribution.



Anti-SF2 SRSF1 Antibody

For Research Use Only. Not for use in diagnostic procedures.