

Anti-Cytochrome P450 2D6/CYP2D6 Antibody Picoband™

Catalog Number: A00498-1

About CYP2D6

Cytochrome P450 2D6 (CYP2D6) is one of the most important enzymes involved in the metabolism of xenobiotics in the body. It is a member of Cytochrome P450, family 2, subfamily D, polypeptide 6. This gene is mapped to chromosome 22q13.1. It has got 497 amino acid proteins which shares 73% sequence identity with the rat protein. CYP2D6 is highly expressed in human liver and it is the major isozyme involved in the formation of N-hydroxyprocainamide, a metabolite potentially involved in the drug-induced lupus syndrome observed with procainamide.

Overview

Product Name	Anti-Cytochrome P450 2D6/CYP2D6 Antibody Picoband™
Reactive Species	Human, Mouse, Rat
Description	Boster Bio Anti-Cytochrome P450 2D6/CYP2D6 Antibody Picoband™ catalog # A00498-1. Tested in IHC, WB applications. This antibody reacts with Human, Mouse, Rat.
Application	IHC, WB
Clonality	Polyclonal
Formulation	Each vial contains 4mg Trehalose, 0.9mg NaCl, 0.2mg Na2HPO4, 0.05mg NaN3.
Storage Instructions	Store at -20°C for one year from date of receipt. After reconstitution, at 4°C for one month. It can also be aliquotted and stored frozen at -20°C for six months. Avoid repeated freeze-thaw cycles.
Host	Rabbit
Uniprot ID	P10635

Technical Details

Immunogen	A synthetic peptide corresponding to a sequence at the C-terminus of human Cytochrome P450 2D6.
Predicted Reactive Species	Chicken
Recommended Detection Systems	Boster recommends Enhanced Chemiluminescent Kit with anti-Rabbit IgG (EK1002) for Western blot, and HRP Conjugated anti-Rabbit IgG Super Vision Assay Kit (SV0002-1) for IHC(P).
Cross Reactivity	No cross-reactivity with other proteins
Isotype	Rabbit IgG
Form	Lyophilized
Concentration	Adding 0.2 ml of distilled water will yield a concentration of 500 ug/ml.

Purification	Immunogen affinity purified.
Suggested Dilutions	<p>Dilute the sample so that the expected range of concentrations fall within the detection range of this kit.</p> <p>If the expected range of concentration is unknown, a pilot test should be conducted to decide the optimal dilution ratio for your samples.</p> <p>Some PubMed article(s) citing the expression level of this target are as follows:</p> <p>Boster Bio's internal QC testing used:</p> <p>Immunohistochemistry (Paraffin-embedded Section), 0.5-1ug/ml, Human, Mouse, Rat, By Heat</p> <p>Western blot, 0.1-0.5ug/ml, Mouse, Rat, Human</p>

Anti-Cytochrome P450 2D6/CYP2D6 Antibody Picoband™ (A00498-1) Images

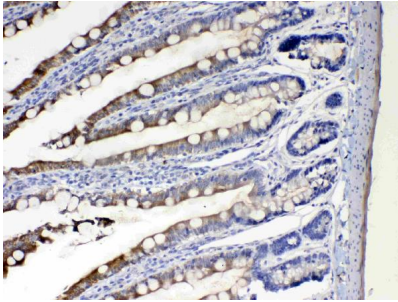


Figure 4. IHC analysis of Cytochrome P450 2D6 using anti-Cytochrome P450 2D6 antibody (A00498-1). Cytochrome P450 2D6 was detected in paraffin-embedded section of rat intestine tissues. Heat mediated antigen retrieval was performed in citrate buffer (pH6, epitope retrieval solution) for 20 mins. The tissue section was blocked with 10% goat serum. The tissue section was then incubated with 1ug/ml rabbit anti-Cytochrome P450 2D6 Antibody (A00498-1) overnight at 4°C. Biotinylated goat anti-rabbit IgG was used as secondary antibody and incubated for 30 minutes at 37°C. The tissue section was developed using Streptavidin-Biotin-Complex (SABC)(Catalog # SA1022) with DAB as the chromogen.

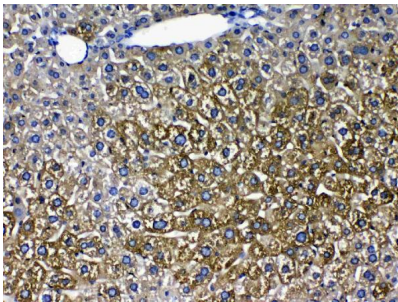


Figure 3. IHC analysis of Cytochrome P450 2D6 using anti-Cytochrome P450 2D6 antibody (A00498-1). Cytochrome P450 2D6 was detected in paraffin-embedded section of mouse liver tissues. Heat mediated antigen retrieval was performed in citrate buffer (pH6, epitope retrieval solution) for 20 mins. The tissue section was blocked with 10% goat serum. The tissue section was then incubated with 1ug/ml rabbit anti-Cytochrome P450 2D6 Antibody (A00498-1) overnight at 4°C. Biotinylated goat anti-rabbit IgG was used as secondary antibody and incubated for 30 minutes at 37°C. The tissue section was developed using Streptavidin-Biotin-Complex (SABC)(Catalog # SA1022) with DAB as the chromogen.

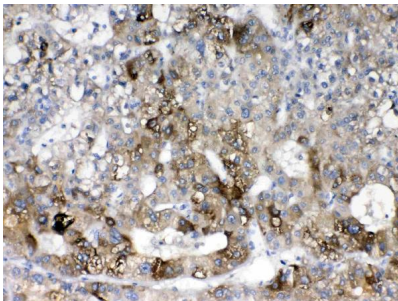


Figure 5. IHC analysis of Cytochrome P450 2D6 using anti-Cytochrome P450 2D6 antibody (A00498-1). Cytochrome P450 2D6 was detected in paraffin-embedded section of human liver cancer tissues. Heat mediated antigen retrieval was performed in citrate buffer (pH6, epitope retrieval solution) for 20 mins. The tissue section was blocked with 10% goat serum. The tissue section was then incubated with 1ug/ml rabbit anti-Cytochrome P450 2D6 Antibody (A00498-1) overnight at 4°C. Biotinylated goat anti-rabbit IgG was used as secondary antibody and incubated for 30 minutes at 37°C. The tissue section was developed using Streptavidin-Biotin-Complex (SABC)(Catalog # SA1022) with DAB as the chromogen.

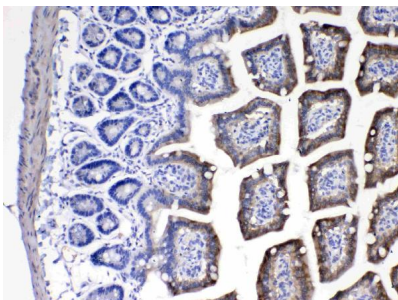


Figure 2. IHC analysis of Cytochrome P450 2D6 using anti-Cytochrome P450 2D6 antibody (A00498-1). Cytochrome P450 2D6 was detected in paraffin-embedded section of mouse intestine tissues. Heat mediated antigen retrieval was performed in citrate buffer (pH6, epitope retrieval solution) for 20 mins. The tissue section was blocked with 10% goat serum. The tissue section was then incubated with 1ug/ml rabbit anti-Cytochrome P450 2D6 Antibody (A00498-1) overnight at 4°C. Biotinylated goat anti-rabbit IgG was used as secondary antibody and incubated

for 30 minutes at 37°C. The tissue section was developed using Streptavidin-Biotin-Complex (SABC)(Catalog # SA1022) with DAB as the chromogen.

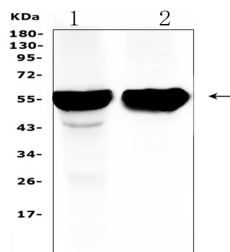


Figure 1. Western blot analysis of Cytochrome P450 2D6 using anti-Cytochrome P450 2D6 antibody (A00498-1). Electrophoresis was performed on a 5-20% SDS-PAGE gel at 70V (Stacking gel) / 90V (Resolving gel) for 2-3 hours. The sample well of each lane was loaded with 50ug of sample under reducing conditions.

Lane 1: rat liver tissue lysates,

Lane 2: mouse liver tissue lysates.

After Electrophoresis, proteins were transferred to a Nitrocellulose membrane at 150mA for 50-90 minutes. Blocked the membrane with 5% Non-fat Milk/ TBS for 1.5 hour at RT. The membrane was incubated with rabbit anti-Cytochrome P450 2D6 antigen affinity purified polyclonal antibody (Catalog # A00498-1) at 0.5 ug/mL overnight at 4°C, then washed with TBS-0.1%Tween 3 times with 5 minutes each and probed with a goat anti-rabbit IgG-HRP secondary antibody at a dilution of 1:10000 for 1.5 hour at RT. The signal is developed using an Enhanced Chemiluminescent detection (ECL) kit (Catalog # EK1002) with Tanon 5200 system. A specific band was detected for Cytochrome P450 2D6 at approximately 56KD. The expected band size for Cytochrome P450 2D6 is at 56KD.

Submit a product review to Biocompare.com

Submit a review of this product to Biocompare.com to receive a \$20 Amazon.com giftcard! Your reviews help your fellow scientists make the right decisions. Thank you for your contribution.



Anti-Cytochrome P450 2D6/CYP2D6 Antibody [™]