

Anti-Filamin 1 (phospho-S2152) FLNA Antibody

Catalog Number: A00502S2152

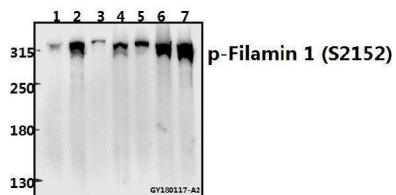
Overview

Product Name	Anti-Filamin 1 (phospho-S2152) FLNA Antibody
Reactive Species	Human, Mouse, Rat
Description	Boster Bio Anti-Filamin 1 (phospho-S2152) FLNA Antibody catalog # A00502S2152. Tested in WB,IHC applications. This antibody reacts with Human,Mouse,Rat.
Application	IHC, WB
Clonality	Polyclonal
Formulation	Rabbit IgG, 1mg/ml in PBS with 0.02% sodium azide, 50% glycerol, pH7.2
Storage Instructions	Store at -20°C for one year. For short term storage and frequent use, store at 4°C for up to one month. Avoid repeated freeze-thaw cycles.
Host	Rabbit
Uniprot ID	P21333

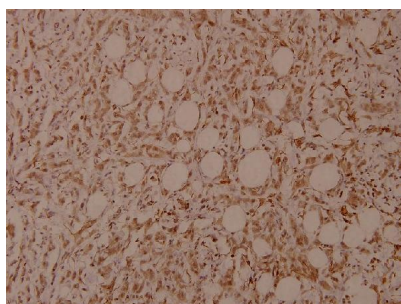
Technical Details

Immunogen	Synthetic phosphopeptide derived from human Filamin 1 around the phosphorylation site of Serine 2152.
Isotype	IgG
Form	Liquid
Concentration	1 mg/ml
Purification	The antibody was affinity-purified from rabbit antiserum by affinity-chromatography using epitope-specific immunogen and the purity is > 95% (by SDS-PAGE).
Suggested Dilutions	WB: 1:500-1:1000 IHC: 1:50-1:200

Anti-Filamin 1 (phospho-S2152) FLNA Antibody (A00502S2152) Images



Western blot (WB) analysis of Filamin 1 (phospho-S2152) polyclonal antibody at 1:500 dilution. Lane 1: Hela whole cell lysate (40ug), Lane 2: A549 whole cell lysate (20ug), Lane 3: The Lung tissue lysate of Rat (20ug), Lane 4: AML-12 whole cell lysate (40ug), Lane 5: CT26 whole cell lysate (40ug), Lane 6: SKOV3 whole cell lysate (40ug), Lane 7: Panc1 whole cell lysate (40ug).



Immunohistochemistry (IHC) analysis of p-Filamin 1 (S2152) pAb in paraffin-embedded human breast carcinoma tissue at 1:100.

Submit a product review to Biocompare.com

Submit a review of this product to Biocompare.com to receive a \$20 Amazon.com giftcard! Your reviews help your fellow scientists make the right decisions. Thank you for your contribution.



Anti-Filamin 1 (phospho-S2152) FLNA Antibody

For Research Use Only. Not for use in diagnostic procedures.