

Anti-GR (phospho-S226) NR3C1 Antibody

Catalog Number: A00503S226

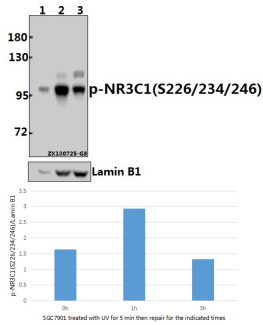
Overview

Product Name	Anti-GR (phospho-S226) NR3C1 Antibody
Reactive Species	Human, Mouse, Rat
Description	Boster Bio Anti-GR (phospho-S226) NR3C1 Antibody catalog # A00503S226. Tested in WB,IHC applications. This antibody reacts with Human,Mouse,Rat.
Application	IHC, WB
Clonality	Polyclonal
Formulation	Rabbit IgG, 1mg/ml in PBS with 0.02% sodium azide, 50% glycerol, pH7.2
Storage Instructions	Store at -20°C for one year. For short term storage and frequent use, store at 4°C for up to one month. Avoid repeated freeze-thaw cycles.
Host	Rabbit
Uniprot ID	P04150

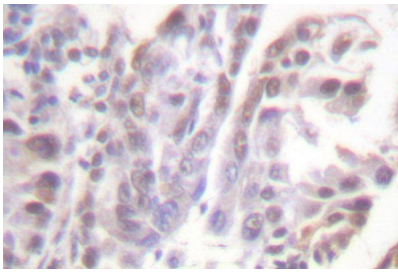
Technical Details

Immunogen	Synthetic phosphopeptide derived from human GR around the phosphorylation site of Serine 226.
Isotype	IgG
Form	Liquid
Concentration	1 mg/ml
Purification	The antibody was affinity-purified from rabbit antiserum by affinity-chromatography using epitope-specific immunogen and the purity is > 95% (by SDS-PAGE).
Suggested Dilutions	WB: 1:500-1:1000 IHC: 1:50-1:200

Anti-GR (phospho-S226) NR3C1 Antibody (A00503S226) Images



Western blot (WB) analysis of p-NR3C1(S226/234/246) pAb at 1:500 dilution Lane1:SGC7901 whole cell lysate(40ug) Lane2:SGC7901 treated with UV for 5 minutes then repair for 1 hour whole cell lysate(40ug) Lane3:SGC7901 treated with UV for 5 minutes then repair for 3 hours whole cell lysate(40ug)



Immunohistochemistry (IHC) analyzes of p-GR (S226) pAb in paraffin-embedded human lung carcinoma tissue.

Submit a product review to Biocompare.com

Submit a review of this product to Biocompare.com to receive a \$20 Amazon.com giftcard! Your reviews help your fellow scientists make the right decisions. Thank you for your contribution.



Anti-GR (phospho-S226) NR3C1 Antibody

For Research Use Only. Not for use in diagnostic procedures.