

Anti-OPA1 Antibody

Catalog Number: A00508

Overview

Product Name	Anti-OPA1 Antibody
Reactive Species	Human, Mouse, Rat
Description	Boster Bio Anti-OPA1 Antibody catalog # A00508. Tested in Flow Cytometry, IF, IHC, ICC, WB applications. This antibody reacts with Human, Mouse, Rat.
Application	Flow Cytometry, IF, IHC, ICC, WB
Clonality	Polyclonal
Formulation	Rabbit IgG, 1mg/ml in PBS with 0.02% sodium azide, 50% glycerol, pH7.2
Storage Instructions	Store at -20°C for one year. For short term storage and frequent use, store at 4°C for up to one month. Avoid repeated freeze-thaw cycles.
Host	Rabbit
Uniprot ID	O60313

Technical Details

Form	Liquid
Purification	Store at +4°C after thawing. Aliquot store at -20°C or -198°C. Avoid repeated freeze / thaw cycles.
Suggested Dilutions	<p>Dilute the sample so that the expected range of concentrations fall within the detection range of this kit.</p> <p>If the expected range of concentration is unknown, a pilot test should be conducted to decide the optimal dilution ratio for your samples.</p> <p>Some PubMed article(s) citing the expression level of this target are as follows: Boster Bio's internal QC testing used WB:1:500-1:1,000 ICC:1:50-1:200 IHC:1:50-1:200 FC:1:50-1:100</p> <p>For protocols, please visit https://www.bosterbio.com/protocol-and-troubleshooting/</p>

Anti-OPA1 Antibody (A00508) Images

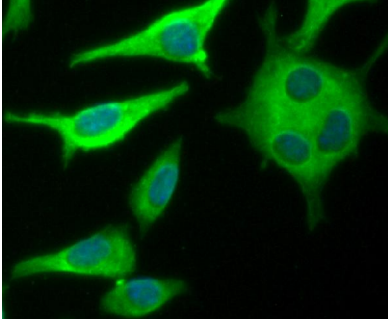


Figure 2. Immunocytochemistry staining of OPA1 using Anti-OPA1 Antibody (A00508).

ICC staining OPA1 in HeLa cells (green). The nuclear counter stain is DAPI (blue). Cells were fixed in paraformaldehyde

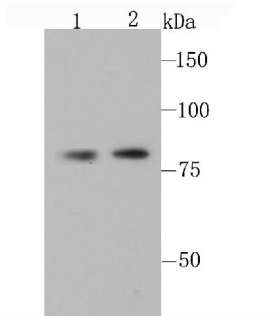


Figure 1. Western blotting validation for Anti-OPA1 Antibody A00508

Western blot analysis of OPA1 on mouse brain tissue(1) and A431 cell(2) lysate using anti-OPA1 antibody at 1/1

Submit a product review to Biocompare.com

Submit a review of this product to Biocompare.com to receive a \$20 Amazon.com giftcard! Your reviews help your fellow scientists make the right decisions. Thank you for your contribution.



Anti-OPA1 Antibody