

Anti-Cyclin-dependent-like kinase 5 Cdk5 Antibody

Catalog Number: A00511

About CDK5

The protein encoded by the gene CDK5 is involved in the control of the cell cycle and interacts with D1 and D3-type G1 cyclins. CDK5 belongs to the protein kinase superfamily, the CMGC Ser/Thr protein kinase family and the CDC2/CDKX subfamily. CDK5 phosphorylates histone H1, tau, MAP2 and NF-H and NF-M and also interacts with p35 which activates the kinase. CDK5 forms a heterodimer, where CDK5 is the catalytic subunit and p35 is the regulatory subunit. CDK5 is also found in a trimolecular complex with CABLES1 and ABL1. CDK5 is a cytoplasmic protein.

Overview

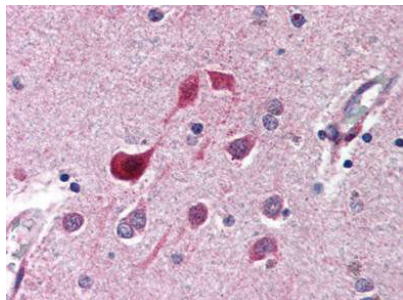
Product Name	Anti-Cyclin-dependent-like kinase 5 Cdk5 Antibody
Reactive Species	Human, Mouse, Rat
Description	Boster Bio Anti-Cyclin-dependent-like kinase 5 Cdk5 Antibody (Catalog # A00511). Tested in IHC, WB applications. This antibody reacts with Human, Mouse, Rat.
Application	ELISA, IP, IHC, WB
Clonality	Polyclonal
Formulation	0.01% (w/v) Sodium Azide
Storage Instructions	Store vial at -20°C prior to opening. Aliquot contents and freeze at -20°C or below for extended storage. Avoid cycles of freezing and thawing. Centrifuge product if not completely clear after standing at room temperature. This product is stable for several weeks at 4°C as an undiluted liquid. Dilute only prior to immediate use. Expiration date is one (1) year from date of opening. (Ship on dry ice.)
Host	Rabbit
Uniprot ID	Q00535

Technical Details

Immunogen	CDK5 (p31) peptide corresponding to the C-terminus of the human protein conjugated to Keyhole Limpet Hemocyanin (KLH).
Predicted Reactive Species	Bovine, Canine, Pig
Cross Reactivity	No cross reactivity with other proteins.
Isotype	Antiserum
Form	Liquid (sterile filtered)
Concentration	85 mg/mL by Refractometry

Purification	Anti-cdk5 was prepared from monospecific antiserum by delipidation and defibrination. Antiserum will specifically react with a 35 kDa cdk5 (p31) protein from human, rat and mouse tissue. No reaction was observed against other related cyclin dependent kinases. Cross-reactivity with cdk5 (p31) from other species may also occur.
Suggested Dilutions	ELISA: 1:5,000 - 1:20,000 IHC: 1:500 IP: 1:100 WB: 1:500 - 1:5,000 CDK5 antibody was tested by immunohistochemistry and immunoblot and found to be reactive against cdk5 (p31) at a dilution of 1:500 followed by reaction with Peroxidase conjugated Affinity Purified anti-Rabbit IgG [H&L] (Goat) code #611-1302. Anti-cdk5 (p31) is suitable for the detection by immunoblot of human, rat and mouse cdk5 (p31). Suggested dilutions for ELISA are 1:500 to 1:2000.

Anti-Cyclin-dependent-like kinase 5 Cdk5 Antibody (A00511) Images



Boster's anti-CDK5 antibody was diluted 1:500 to detect CDK5 in human brain cortex tissue. Tissue was formalin fixed and paraffin embedded. No pre-treatment of sample was required. The image shows the localization of antibody as the precipitated red signal, with a hematoxylin purple nuclear counter stain.

Submit a product review to Biocompare.com

Submit a review of this product to Biocompare.com to receive a \$20 Amazon.com giftcard! Your reviews help your fellow scientists make the right decisions. Thank you for your contribution.



Anti-Cyclin-dependent-like kinase 5 Cdk5 Antibody

For Research Use Only. Not for use in diagnostic procedures.