

## Anti-Protein delta homolog 1 DLK1 Antibody

Catalog Number: A00513

### About DLK1

The Delta-like 1 homolog (DLK1) is a transmembrane protein containing six epidermal growth factor repeats. It is involved in the differentiation of several cell types, including adipocytes and is also thought to be a tumor suppressor. The DLK1 gene is one of several imprinted genes located in a region on chromosome 14q32; certain mutations in this imprinted region can cause phenotypes similar to maternal and paternal uniparental disomy of chromosome 14 (UPD14). DLK1 is expressed from the paternal allele; a polymorphism within this gene has been associated with child and adolescent obesity.

### Overview

Product Name	Anti-Protein delta homolog 1 DLK1 Antibody
Reactive Species	Human, Mouse, Rat
Description	Boster Bio Anti-Protein delta homolog 1 DLK1 Antibody (Catalog # A00513). Tested in ELISA, WB, ICC, IF applications. This antibody reacts with Human, Mouse, Rat.
Application	ELISA, IF, ICC, WB
Clonality	Polyclonal
Formulation	DLK1 Antibody is supplied in PBS containing 0.02% sodium azide.
Storage Instructions	DLK1 antibody can be stored at 4°C for three months and -20°C, stable for up to one year. Avoid repeated freeze-thaw cycles. Antibodies should not be exposed to prolonged high temperatures.
Host	Rabbit
Uniprot ID	P80370

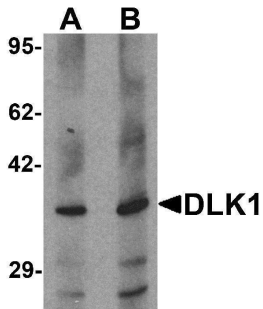
### Technical Details

Immunogen	DLK1 antibody was raised against an 18 amino acid synthetic peptide near the carboxy terminus of human DLK1. The immunogen is located within amino acids 260 - 310 of DLK1.
Predicted Reactive Species	Bovine
Cross Reactivity	At least four isoforms of DLK1 are known to exist.
Isotype	IgG
Form	Liquid
Concentration	1 mg/mL
Purification	DLK1 Antibody is affinity chromatography purified via peptide column.

Suggested Dilutions

DLK1 antibody can be used for detection of DLK1 by Western blot at 1 - 2 ug/mL.  
Antibody validated: Western Blot in human samples; Immunocytochemistry in human samples and Immunofluorescence in human samples. All other applications and species not yet tested. Optimal dilutions for each application should be determined by the researcher.

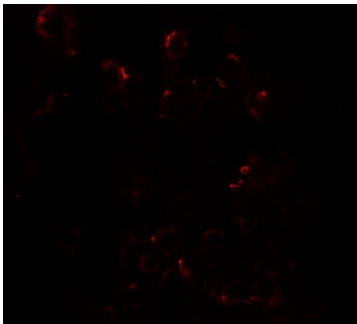
## Anti-Protein delta homolog 1 DLK1 Antibody (A00513) Images



Western blot analysis of HepG2 in 293 cell lysate with DLK1 antibody at (A) 1 and (B) 2 ug/mL.



Immunocytochemistry of DLK1 in HepG2 cells with DLK1 antibody at 2.5 ug/ml.



Immunofluorescence of DLK1 in HepG2 cells with DLK1 antibody at 20 ug/ml.

### Submit a product review to [Biocompare.com](https://www.biocompare.com)

Submit a review of this product to [Biocompare.com](https://www.biocompare.com) to receive a \$20 Amazon.com giftcard! Your reviews help your fellow scientists make the right decisions. Thank you for your contribution.



Anti-Protein delta homolog 1 DLK1 Antibody

For Research Use Only. Not for use in diagnostic procedures.