

Anti-Protein delta homolog 1 DLK1 Antibody

Catalog Number: A00513-1

About DLK1

May have a role in neuroendocrine differentiation.

Overview

Product Name	Anti-Protein delta homolog 1 DLK1 Antibody
Reactive Species	Human
Description	Boster Bio Anti-Protein delta homolog 1 DLK1 Antibody (Catalog # A00513-1). Tested in WB applications. This antibody reacts with Human.
Application	WB
Clonality	Polyclonal
Formulation	Supplied at 1.0mg/mL in phosphate buffered saline (without Mg ²⁺ and Ca ²⁺), pH 7.4, 150mM NaCl, 0.02% sodium azide and 50% glycerol.
Storage Instructions	Store at -20°C for one year. For short term storage and frequent use, store at 4°C for up to one month. Avoid repeated freeze-thaw cycles.
Host	Rabbit
Uniprot ID	P80370

Technical Details

Immunogen	Peptide sequence around aa.375~379(S-K-E-A-G) derived from Human DLK1.
Predicted Reactive Species	Bovine, Canine, Pig
Cross Reactivity	No cross reactivity with other proteins.
Isotype	Antiserum
Form	Liquid
Concentration	1 mg/ml
Purification	Antibodies were produced by immunizing rabbits with synthetic peptide and KLH conjugates. Antibodies were purified by affinity-chromatography using epitope-specific peptide.
Suggested Dilutions	Dilute the sample so that the expected range of concentrations fall within the detection range of this kit. If the expected range of concentration is unknown, a pilot test should be conducted to decide the optimal dilution ratio for your samples.

Some PubMed article(s) citing the expression level of this target are as follows:

Boster Bio's internal QC testing used:

Predicted MW: 51kd

Western blotting: 1:500~1:1000

Anti-Protein delta homolog 1 DLK1 Antibody (A00513-1) Images

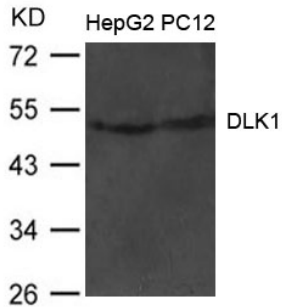


Figure 1. Western blot analysis of DLK1 using anti-DLK1 antibody (A00513-1).

Electrophoresis was performed on a 5-20% SDS-PAGE gel at 70V (Stacking gel) / 90V (Resolving gel) for 2-3 hours. The sample well of each lane was loaded with 50ug of sample under reducing conditions.

After Electrophoresis, proteins were transferred to a Nitrocellulose membrane at 150mA for 50-90 minutes. Blocked the membrane with 5% Non-fat Milk/ TBS for 1.5 hour at RT. The membrane was incubated with rabbit anti-DLK1 antigen affinity purified polyclonal antibody (Catalog # A00513-1) at 0.5 ug/mL overnight at 4°C, then washed with TBS-0.1%Tween 3 times with 5 minutes each and probed with a goat anti-Rabbit IgG-HRP secondary antibody at a dilution of 1:10000 for 1.5 hour at RT. The signal is developed using an Enhanced Chemiluminescent detection (ECL) kit (Catalog # SA1022) with Tanon 5200 system. A specific band was detected for DLK1.

Submit a product review to Biocompare.com

Submit a review of this product to Biocompare.com to receive a \$20 Amazon.com giftcard! Your reviews help your fellow scientists make the right decisions. Thank you for your contribution.



Anti-Protein delta homolog 1 DLK1 Antibody