

## Anti-PON1 Antibody Picoband™

Catalog Number: A00516-1

### About Pon1

Serum paraoxonase/arylesterase 1 (PON1), also known as aromatic esterase 1, is an enzyme that in humans is encoded by the PON1 gene. It is mapped to 7q21.3. This gene has esterase and more specifically paraoxonase activity. PON1 is responsible for hydrolysing organophosphate pesticides and nerve gasses. Polymorphisms in the PON1 gene significantly affect the catalytic ability of the enzyme. PON1 (paraoxonase 1) is also a major anti-atherosclerotic component of high-density lipoprotein (HDL). The PON1 gene is activated by PPAR-gamma, which increases synthesis and release of paraoxonase 1 enzyme from the liver, reducing atherosclerosis.

### Overview

Product Name	Anti-PON1 Antibody Picoband™
Reactive Species	Mouse
Description	Boster Bio Anti-PON1 Antibody Picoband™ catalog # A00516-1. Tested in ELISA applications. This antibody reacts with Mouse.
Application	ELISA
Clonality	Polyclonal
Formulation	Each vial contains 5mg BSA, 0.9mg NaCl, 0.2mg Na2HPO4, 0.05mg NaN3.
Storage Instructions	Store at -20°C for one year from date of receipt. After reconstitution, at 4°C for one month. It can also be aliquotted and stored frozen at -20°C for six months. Avoid repeated freeze-thaw cycles.
Host	Rabbit
Uniprot ID	Pon1: P52430

### Technical Details

Immunogen	E. coli-derived mouse PON1 recombinant protein (Position: A30-D274).
Predicted Reactive Species	Chicken
Recommended Detection Systems	Boster recommends Enhanced Chemiluminescent Kit with anti-Rabbit IgG (EK1002) for Western blot, and HRP Conjugated anti-Rabbit IgG Super Vision Assay Kit (SV0002-1) for IHC(P).
Cross Reactivity	No cross-reactivity with other proteins.
Isotype	Rabbit IgG
Form	Lyophilized
Concentration	Adding 0.2 ml of distilled water will yield a concentration of 500 ug/ml.

Purification	Immunogen affinity purified.
Suggested Dilutions	<p>Dilute the sample so that the expected range of concentrations fall within the detection range of this kit.</p> <p>If the expected range of concentration is unknown, a pilot test should be conducted to decide the optimal dilution ratio for your samples.</p> <p>Some PubMed article(s) citing the expression level of this target are as follows:</p> <p>Boster Bio's internal QC testing used:</p> <p>ELISA Capture (Matched Antibody Pair), 2-8ug/ml</p>

## Anti-PON1 Antibody Picoband™ (A00516-1) Images

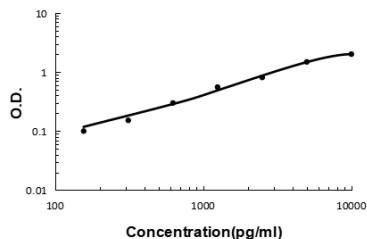


Figure 1. Sandwich ELISA - Recombinant mouse PON1 protein standard curve.  
Use in combination with reagents from Mouse PON1 ELISA Kit EZ-Set (DIY Antibody Pairs) (EZ1621).

## Submit a product review to Biocompare.com

Submit a review of this product to Biocompare.com to receive a \$20 Amazon.com giftcard! Your reviews help your fellow scientists make the right decisions. Thank you for your contribution.



Anti-PON1 Antibody™