

Anti-Notch 2 Antibody

Catalog Number: A00518-1

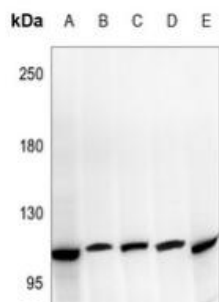
Overview

| | |
|----------------------|--|
| Product Name | Anti-Notch 2 Antibody |
| Reactive Species | Human, Mouse, Rat |
| Description | Boster Bio Anti-Notch 2 Antibody catalog # A00518-1. Tested in WB,ICC/IF applications. This antibody reacts with Human,Mouse,Rat. |
| Application | IF, ICC, WB |
| Clonality | Polyclonal |
| Formulation | Rabbit IgG, 1mg/ml in PBS with 0.02% sodium azide, 50% glycerol, pH7.2 |
| Storage Instructions | Store at -20°C for one year. For short term storage and frequent use, store at 4°C for up to one month. Avoid repeated freeze-thaw cycles. |
| Host | Rabbit |
| Uniprot ID | Q04721 |

Technical Details

| | |
|---------------------|---|
| Immunogen | KLH-conjugated synthetic peptide encompassing a sequence within the center region of human NOTCH2. |
| Isotype | IgG |
| Form | Liquid |
| Concentration | 1 mg/ml |
| Purification | The antibody was affinity-purified from rabbit antiserum by affinity-chromatography using epitope-specific immunogen and the purity is > 95% (by SDS-PAGE). |
| Suggested Dilutions | WB: 1:500-1:2000 ICC/IF: 1:50-1:200 |

Anti-Notch 2 Antibody (A00518-1) Images



Western blot analysis of NOTCH2 expression in HEK293T (A), HepG2 (B), H1792 (C), H9C2 (D), AML12 (E) whole cell lysates.

Submit a product review to Biocompare.com

Submit a review of this product to Biocompare.com to receive a \$20 Amazon.com giftcard! Your reviews help your fellow scientists make the right decisions. Thank you for your contribution.



Anti-Notch 2 Antibody

For Research Use Only. Not for use in diagnostic procedures.