

Anti-AKT3 Antibody (Center)

Catalog Number: A00520-1

About AKT3

AKT3 is a member of the AKT, also called PKB, serine/threonine protein kinase family. AKT kinases are known to be regulators of cell signaling in response to insulin and growth factors. They are involved in a wide variety of biological processes including cell proliferation, differentiation, apoptosis, tumorigenesis, as well as glycogen synthesis and glucose uptake. This kinase has been shown to be stimulated by platelet-derived growth factor (PDGF), insulin, and insulin-like growth factor 1 (IGF1).

Overview

Product Name	Anti-AKT3 Antibody (Center)
Reactive Species	Human, Monkey, Mouse, Rat
Description	Boster Bio Anti-AKT3 Antibody (Center) (Catalog # A00520-1). Tested in WB, IHC-P application(s). This antibody reacts with Human, Mouse, Monkey, Rat.
Application	IHC-P, WB
Clonality	Polyclonal
Formulation	Purified polyclonal antibody supplied in PBS with 0.09% (W/V) sodium azide.
Storage Instructions	Maintain refrigerated at 2-8°C for up to 2 weeks. For long-term storage, store at -20°C in small aliquots to prevent freeze-thaw cycles.
Host	Rabbit
Uniprot ID	Q9Y243

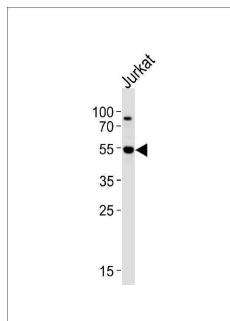
Technical Details

Immunogen	This AKT3 antibody is generated from rabbits immunized with a KLH conjugated synthetic peptide between 88-118 amino acids from the Central region of human AKT3.
Predicted Reactive Species	Bovine, Rat, Xenopus
Recommended Detection Systems	Boster recommends Enhanced Chemiluminescent Kit with anti-Rabbit IgG (EK1002) for Western blot, and HRP Conjugated anti-Rabbit IgG Super Vision Assay Kit (SV0002-1) for IHC(P).
Cross Reactivity	No cross reactivity with other proteins.
Isotype	Rabbit IgG
Form	Liquid
Purification	This antibody is prepared by Saturated Ammonium Sulfate (SAS) precipitation followed by dialysis against PBS.

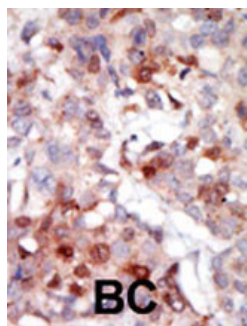
Suggested Dilutions

WB: 1:1000
IHC-P: 1:50-1:100

Anti-AKT3 Antibody (Center) (A00520-1) Images



Western blot analysis of lysate from Jurkat cell line, using AKT3 Antibody (Q103). A00520-1 was diluted at 1:1000 at each lane. A goat anti-rabbit IgG H&L (HRP) at 1:5000 dilution was used as the secondary antibody. Lysate at 35ug per lane.



Formalin-fixed and paraffin-embedded human cancer tissue reacted with the primary antibody, which was peroxidase-conjugated to the secondary antibody, followed by AEC staining. This data demonstrates the use of this antibody for immunohistochemistry; clinical relevance has not been evaluated. BC = breast carcinoma; HC = hepatocarcinoma.

Submit a product review to [Biocompare.com](https://www.biocompare.com)

Submit a review of this product to [Biocompare.com](https://www.biocompare.com) to receive a \$20 Amazon.com giftcard! Your reviews help your fellow scientists make the right decisions. Thank you for your contribution.



Anti-AKT3 Antibody (Center)

For Research Use Only. Not for use in diagnostic procedures.