

Anti-Alpha 1 Fetoprotein/Afp Antibody Picoband®

Catalog Number: A00522

About Afp

RAC-gamma serine/threonine-protein kinase, also known as protein kinase Akt-3, is an enzyme that in humans is encoded by the AKT3 gene. This gene is mapped to 1q43-q44. The protein encoded by this gene is a member of the AKT, also called PKB, serine/threonine protein kinase family. AKT kinases are known to be regulators of cell signaling in response to insulin and growth factors. They are involved in a wide variety of biological processes including cell proliferation, differentiation, apoptosis, tumorigenesis, as well as glycogen synthesis and glucose uptake. This kinase has been shown to be stimulated by platelet-derived growth factor (PDGF), insulin, and insulin-like growth factor 1 (IGF1). AKT3 plays an important role in brain development and is crucial for the viability of malignant glioma cells. AKT3 isoform may also be the key molecule in up-regulation and down-regulation of MMP13 via IL13. This gene is required for the coordination of mitochondrial biogenesis with growth factor-induced increases in cellular energy demands.

Overview

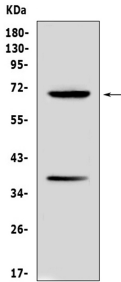
Product Name	Anti-Alpha 1 Fetoprotein/Afp Antibody Picoband®
Reactive Species	Mouse, Rat
Description	Boster Bio Anti-Alpha 1 Fetoprotein/Afp Antibody Picoband® catalog # A00522. Tested in ELISA, WB applications. This antibody reacts with Mouse, Rat. The brand Picoband indicates this is a premium antibody that guarantees superior quality, high affinity, and strong signals with minimal background in Western blot applications. Only our best-performing antibodies are designated as Picoband, ensuring unmatched performance.
Application	ELISA, WB
Clonality	Polyclonal
Formulation	Each vial contains 4 mg Trehalose, 0.9 mg NaCl and 0.2 mg Na ₂ HPO ₄ .
Storage Instructions	Store at -20°C for one year from date of receipt. After reconstitution, at 4°C for one month. It can also be aliquotted and stored frozen at -20°C for six months. Avoid repeated freeze-thaw cycles.
Host	Rabbit
Uniprot ID	P02772

Technical Details

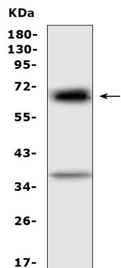
Immunogen	E. coli-derived mouse Alpha 1 Fetoprotein recombinant protein (Position: K19-L254).
Recommended Detection Systems	Boster recommends Enhanced Chemiluminescent Kit with anti-Rabbit IgG (EK1002) for Western blot.
Cross Reactivity	No cross-reactivity with other proteins.
Isotype	Rabbit IgG

Form	Lyophilized
Concentration	Adding 0.2 ml of distilled water will yield a concentration of 500 ug/ml.
Purification	Immunogen affinity purified.
Suggested Dilutions	Western blot, 0.1-0.5ug/ml ELISA, 0.1-0.5ug/ml

Anti-Alpha 1 Fetoprotein/Afp Antibody Picoband® (A00522) Images



Western blot analysis of Alpha 1 Fetoprotein using anti-Alpha 1 Fetoprotein antibody (A00522). Electrophoresis was performed on a 5-20% SDS-PAGE gel at 70V (Stacking gel) / 90V (Resolving gel) for 2-3 hours. The sample well of each lane was loaded with 50ug of sample under reducing conditions. Lane 1: mouse HEPA1-6 cell lysates. After Electrophoresis, proteins were transferred to a Nitrocellulose membrane at 150mA for 50-90 minutes. Blocked the membrane with 5% Non-fat Milk/ TBS for 1.5 hour at RT. The membrane was incubated with rabbit anti-Alpha 1 Fetoprotein antigen affinity purified polyclonal antibody (Catalog # A00522) at 0.5 ug/mL overnight at 4°C, then washed with TBS-0.1%Tween 3 times with 5 minutes each and probed with a goat anti-rabbit IgG-HRP secondary antibody at a dilution of 1:10000 for 1.5 hour at RT. The signal is developed using an Enhanced Chemiluminescent detection (ECL) kit (Catalog # EK1002) with Tanon 5200 system. A specific band was detected for Alpha 1 Fetoprotein at approximately 69KD. The expected band size for Alpha 1 Fetoprotein is at 69KD.



Western blot analysis of Alpha 1 Fetoprotein using anti-Alpha 1 Fetoprotein antibody (A00522). Electrophoresis was performed on a 5-20% SDS-PAGE gel at 70V (Stacking gel) / 90V (Resolving gel) for 2-3 hours. The sample well of each lane was loaded with 50ug of sample under reducing conditions. Lane 1: rat RH35 whole cell lysates. After Electrophoresis, proteins were transferred to a Nitrocellulose membrane at 150mA for 50-90 minutes. Blocked the membrane with 5% Non-fat Milk/ TBS for 1.5 hour at RT. The membrane was incubated with rabbit anti-Alpha 1 Fetoprotein antigen affinity purified polyclonal antibody (Catalog # A00522) at 0.5 ug/mL overnight at 4°C, then washed with TBS-0.1%Tween 3 times with 5 minutes each and probed with a goat anti-rabbit IgG-HRP secondary antibody at a dilution of 1:10000 for 1.5 hour at RT. The signal is developed using an Enhanced Chemiluminescent detection (ECL) kit (Catalog # EK1002) with Tanon 5200 system. A specific band was detected for Alpha 1 Fetoprotein at approximately 69KD. The expected band size for Alpha 1 Fetoprotein is at 69KD.

7 Publications Citing This Product

1. PubMed ID: 10.1111/j.1478-3231.2008.01855.x, Mesenchymal stem cells from human umbilical cords ameliorate mouse hepatic injury in vivo
2. PubMed ID: 26235702, Adipose tissue-derived mesenchymal stem cells differentiated into hepatocyte-like cells in vivo and in vitro
3. PubMed ID: 25576343, Extracellular regulated protein kinases 1/2 phosphorylation is required for hepatic differentiation of human umbilical cord-derived mesenchymal stem cells

Visit bosterbio.com/anti-alpha-1-fetoprotein-picoband-trade-antibody-a00522-boster.html to see all 7 publications.

Submit a product review to Biocompare.com

Submit a review of this product to Biocompare.com to receive a \$20 Amazon.com giftcard! Your reviews help your fellow scientists make the right decisions. Thank you for your contribution.



Anti-Alpha 1 Fetoprotein/Afp Antibody

For Research Use Only. Not for use in diagnostic procedures.