

## Anti-STAT6 Antibody

Catalog Number: A00523-2

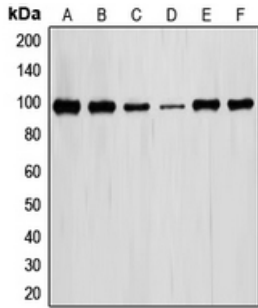
### Overview

Product Name	Anti-STAT6 Antibody
Reactive Species	Human, Mouse
Description	Boster Bio Anti-STAT6 Antibody catalog # A00523-2. Tested in WB,IHC applications. This antibody reacts with Human,Mouse.
Application	IHC, WB
Clonality	Polyclonal
Formulation	Rabbit IgG, 1mg/ml in PBS with 0.02% sodium azide, 50% glycerol, pH7.2
Storage Instructions	Store at -20°C for one year. For short term storage and frequent use, store at 4°C for up to one month. Avoid repeated freeze-thaw cycles.
Host	Rabbit
Uniprot ID	P42226

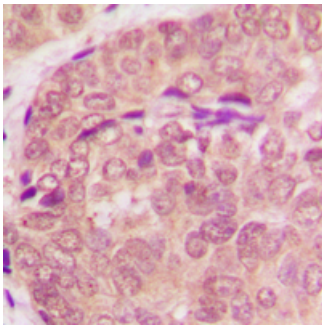
### Technical Details

Immunogen	Synthetic peptide, corresponding to Human STAT6.
Isotype	IgG
Form	Liquid
Concentration	1 mg/ml
Purification	ProA affinity purified
Suggested Dilutions	WB: 1:500-1:1,000 IHC: 1:50-1:200

## Anti-STAT6 Antibody (A00523-2) Images



Western blot (WB) analysis of STAT6 polyclonal antibody at 1:500 dilution LaneA:MCF-7 whole cell lysate(30ug) LaneB:Hela whole cell lysate(30ug) LaneC:HT29 whole cell lysate(30ug) LaneD:RAW264.7 whole cell lysate(30ug) LaneE:PC12 whole cell lysate(30ug) LaneF:COS-7 whole cell lysate(30ug)



Immunohistochemistry of paraffin-embedded human breast cancer using STAT6 antibody at dilution of 1:50.

## Submit a product review to Biocompare.com

Submit a review of this product to Biocompare.com to receive a \$20 Amazon.com giftcard! Your reviews help your fellow scientists make the right decisions. Thank you for your contribution.



### Anti-STAT6 Antibody

For Research Use Only. Not for use in diagnostic procedures.