

## Anti-Phospho-Stat6 (T645) Antibody

Catalog Number: A00523T645-1

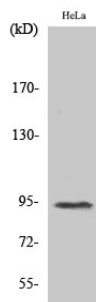
### Overview

Product Name	Anti-Phospho-Stat6 (T645) Antibody
Reactive Species	Human, Mouse, Rat
Description	Boster Bio Anti-Phospho-Stat6 (T645) Antibody catalog # A00523T645-1. Tested in WB, IHC, IF, IP, ELISA applications. This antibody reacts with Human, Mouse, Rat.
Application	ELISA, IP, IF, IHC, WB
Clonality	Polyclonal
Formulation	Liquid in PBS containing 50% glycerol, 0.5% stabilizing protein and 0.02% sodium azide. *This antibody is supplied in a stabilized formulation. Compatibility with conjugation reactions depends on the chemistry of the conjugation method used. For conjugation methods that are not compatible with the stabilizing components present in this formulation, a carrier-free antibody format is required.
Storage Instructions	Store at -20°C for one year. For short term storage and frequent use, store at 4°C for up to one month. Avoid repeated freeze-thaw cycles.
Host	Rabbit
Uniprot ID	P42226

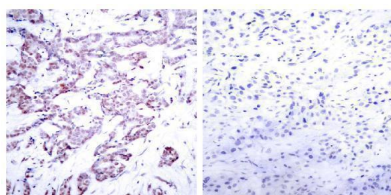
### Technical Details

Immunogen	The antiserum was produced against synthesized peptide derived from human STAT6 around the phosphorylation site of Thr645. AA range:612-661
Isotype	IgG
Form	Liquid
Concentration	1 mg/ml
Purification	The antibody was affinity-purified from rabbit antiserum by affinity-chromatography using epitope-specific immunogen.
Suggested Dilutions	WB 1:500-1:2000 IHC 1:100-1:300 IP 2-5 ug/mg lysate ELISA 1:10000 IF 1:50-200

## Anti-Phospho-Stat6 (T645) Antibody (A00523T645-1) Images



Western Blot analysis of various cells using Phospho-Stat6 (T645) Polyclonal Antibody



Immunohistochemistry analysis of paraffin-embedded human breast carcinoma, using STAT6 (Phospho-Thr645) Antibody. The picture on the right is blocked with the phospho peptide.

### Submit a product review to [Biocompare.com](https://www.biocompare.com)

Submit a review of this product to [Biocompare.com](https://www.biocompare.com) to receive a \$20 Amazon.com giftcard! Your reviews help your fellow scientists make the right decisions. Thank you for your contribution.



### Anti-Phospho-Stat6 (T645) Antibody

For Research Use Only. Not for use in diagnostic procedures.