

## Anti-RBX1 Antibody (C-term)

Catalog Number: A00524-1

### About RBX1

E3 ubiquitin ligase component of multiple cullin-RING- based E3 ubiquitin-protein ligase complexes which mediate the ubiquitination and subsequent proteasomal degradation of target proteins, including proteins involved in cell cycle progression, signal transduction, transcription and transcription-coupled nucleotide excision repair. The functional specificity of the E3 ubiquitin-protein ligase complexes depends on the variable substrate recognition components. As a component of the CSA complex promotes the ubiquitination of ERCC6 resulting in proteasomal degradation. Through the RING-type zinc finger, seems to recruit the E2 ubiquitination enzyme, like CDC34, to the complex and brings it into close proximity to the substrate. Probably also stimulates CDC34 autoubiquitination. May be required for histone H3 and histone H4 ubiquitination in response to ultraviolet and for subsequent DNA repair. Promotes the neddylation of CUL1, CUL2, CUL4 and CUL4 via its interaction with UBE2M. Involved in the ubiquitination of KEAP1, ENC1 and KLHL41. In concert with ATF2 and CUL3, promotes degradation of KAT5 thereby attenuating its ability to acetylate and activate ATM.

### Overview

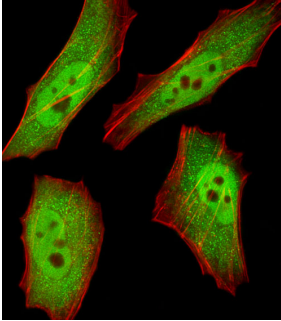
Product Name	Anti-RBX1 Antibody (C-term)
Reactive Species	Human, Mouse
Description	Boster Bio Anti-RBX1 Antibody (C-term) (Catalog # A00524-1). Tested in WB, IHC-P, IF application(s). This antibody reacts with Human, Mouse.
Application	IF, IHC-P, WB
Clonality	Polyclonal
Formulation	Purified polyclonal antibody supplied in PBS with 0.09% (W/V) sodium azide.
Storage Instructions	Maintain refrigerated at 2-8°C for up to 2 weeks. For long-term storage, store at -20°C in small aliquots to prevent freeze-thaw cycles.
Host	Rabbit
Uniprot ID	P62877

### Technical Details

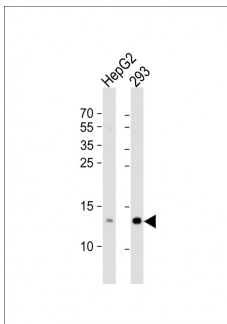
Immunogen	This RBX1 antibody is generated from a rabbit immunized with a KLH conjugated synthetic peptide between 74-108 amino acids from the C-terminal region of human RBX1.
Predicted Reactive Species	C. elegans
Recommended Detection Systems	Boster recommends Enhanced Chemiluminescent Kit with anti-Rabbit IgG (EK1002) for Western blot, and HRP Conjugated anti-Rabbit IgG Super Vision Assay Kit (SV0002-1) for IHC(P).
Cross Reactivity	No cross reactivity with other proteins.

Isotype	Rabbit IgG
Form	Liquid
Purification	This antibody is purified through a protein A column, followed by peptide affinity purification.
Suggested Dilutions	IF: 1:25 WB: 1:1000 IHC-P: 1:25

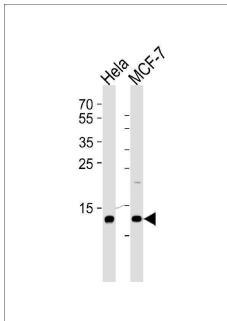
## Anti-RBX1 Antibody (C-term) (A00524-1) Images



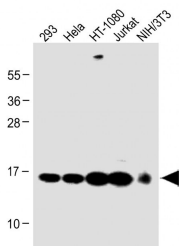
Fluorescent image of HeLa cells stained with RBX1 Antibody (C-term). A00524-1 was diluted at 1:25 dilution. An Alexa Fluor 488-conjugated goat anti-rabbit IgG at 1:400 dilution was used as the secondary antibody (green). Cytoplasmic actin was counterstained with Alexa Fluor® 555 conjugated with Phalloidin (red).



All lanes : Anti-RBX1 Antibody (C-term) at 1:1000 dilution  
Lane 1: HepG2 whole cell lysate  
Lane 2: 293 whole cell lysate  
Lysates/proteins at 20 µg per lane. Secondary Goat Anti-Rabbit IgG, (H+L), Peroxidase conjugated at 1/10000 dilution. Predicted band size : 12 kDa  
Blocking/Dilution buffer: 5% NFDN/TBST.

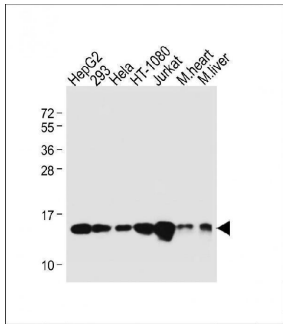


Western blot analysis of lysates from HeLa, MCF-7 cell line (from left to right), using RBX1 Antibody (C-term) (Cat. #A00524-1). A00524-1 was diluted at 1:1000 at each lane. A goat anti-rabbit IgG H&L (HRP) at 1:5000 dilution was used as the secondary antibody. Lysates at 35ug per lane.

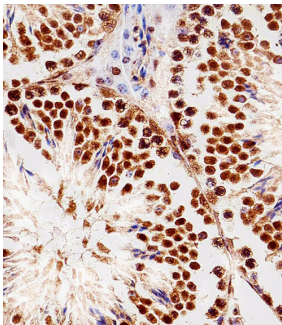


All lanes : Anti-Mouse) Rbx1 Antibody (C-term) at 1:1000 dilution  
Lane 1: 293 whole cell lysate  
Lane 2: HeLa whole cell lysate  
Lane 3: HT-1080 whole cell lysate  
Lane 4: Jurkat whole cell lysate  
Lane 5: NIH/3T3 whole cell lysate  
Lysates/proteins at 20 µg per lane. Secondary Goat Anti-Rabbit IgG, (H+L), Peroxidase conjugated at 1/10000 dilution. Predicted band size : 12 kDa  
Blocking/Dilution buffer: 5% NFDN/TBST.

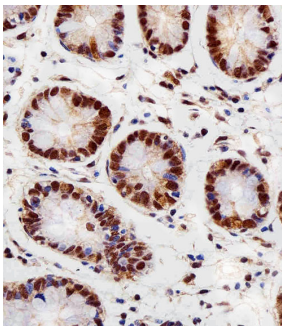
All lanes : Anti-Mouse) Rbx1 Antibody (C-term) at 1:1000 dilution  
Lane 1: HepG2 whole cell lysate  
Lane 2: 293 whole cell lysate  
Lane 3: HeLa whole cell lysate  
Lane 4: HT-1080 whole cell lysate  
Lane 5: Jurkat whole cell lysate  
Lane 6: Mouse liver whole cell lysate  
Lysates/proteins at 20 µg per lane. Secondary Goat Anti-Rabbit IgG, (H+L), Peroxidase conjugated at 1/10000



dilution. Predicted band size : 12 kDa  
Blocking/Dilution buffer: 5% NFDM/TBST.



Immunohistochemical analysis of paraffin-embedded M. testis section using RBX1 Antibody (C-term) (Cat#A00524-1). A00524-1 was diluted at 1:100 dilution. A peroxidase-conjugated goat anti-rabbit IgG at 1:400 dilution was used as the secondary antibody, followed by DAB staining.



Immunohistochemical analysis of paraffin-embedded H. colon section using RBX1 Antibody (C-term) (Cat#A00524-1). A00524-1 was diluted at 1:100 dilution. A peroxidase-conjugated goat anti-rabbit IgG at 1:400 dilution was used as the secondary antibody, followed by DAB staining.

## Submit a product review to Biocompare.com

Submit a review of this product to Biocompare.com to receive a \$20 Amazon.com giftcard! Your reviews help your fellow scientists make the right decisions. Thank you for your contribution.



Anti-RBX1 Antibody (C-term)

For Research Use Only. Not for use in diagnostic procedures.