

## Anti-Ipaf NLRC4 Antibody

Catalog Number: A00525

### About NLRC4

Apoptosis is related to many diseases and induced by a family of cell death receptors and their ligands. Cell death signals are transduced by death domain containing adaptor molecules and proteases including several members of the caspase family. Another family of proteins that functions as a critical regulator of apoptosis and NFkappa signaling pathways is the CED-4/Apaf-1 (apoptosis protein activating factor-1) protein family. Ipaf (ICE protease activating factor) is a CED-4/Apaf-1 family member that activates caspase-1/ICE and can induce apoptosis in human cells in a caspase-1 dependent manner. Ipaf and caspase-1 are thought to interact with each other through the association of the Ipaf amino-terminal CARD (caspase recruitment domain) and amino-terminal CARD of caspase-1.

### Overview

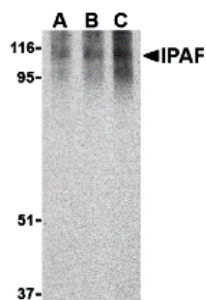
Product Name	Anti-Ipaf NLRC4 Antibody
Reactive Species	Human
Description	Boster Bio Anti-Ipaf NLRC4 Antibody (Catalog # A00525). Tested in ELISA, WB, ICC, IF applications. This antibody reacts with Human.
Application	ELISA, IF, ICC, WB
Clonality	Polyclonal
Formulation	Ipaf Antibody is supplied in PBS containing 0.02% sodium azide.
Storage Instructions	Ipaf antibody can be stored at 4°C for three months and -20°C, stable for up to one year. Avoid repeated freeze-thaw cycles. Antibodies should not be exposed to prolonged high temperatures.
Host	Rabbit
Uniprot ID	Q9NPP4

### Technical Details

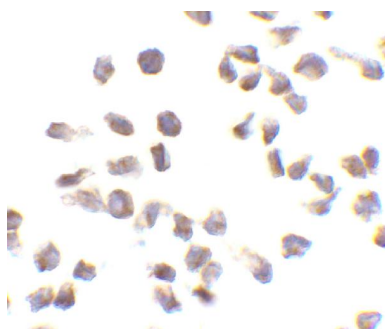
Immunogen	Ipaf antibody was raised against a synthetic peptide corresponding to amino acids near the C-terminus of human Ipaf. The immunogen is located within the last 50 amino acids of Ipaf.
Predicted Reactive Species	Mouse, Rat
Cross Reactivity	At least two isoforms of KEAP1 are known to exist.
Isotype	IgG
Form	Liquid
Concentration	1 mg/mL

Purification	Ipaf Antibody is affinity chromatography purified via peptide column.
Suggested Dilutions	<p>Dilute the sample so that the expected range of concentrations fall within the detection range of this kit.</p> <p>If the expected range of concentration is unknown, a pilot test should be conducted to decide the optimal dilution ratio for your samples.</p> <p>Some PubMed article(s) citing the expression level of this target are as follows:</p> <p>Boster Bio's internal QC testing used:</p> <p>Ipaf polyclonal antibody can be used for the detection of Ipaf by Western blot at 1 and 2 ug/mL. A 110 kDa band can be detected. Antibody can also be used for immunocytochemistry starting at 10 ug/mL. For immunofluorescence start at 10 ug/mL.</p> <p>Antibody validated: Western Blot in human samples; Immunocytochemistry in human samples and Immunofluorescence in human samples. All other applications and species not yet tested. Optimal dilutions for each application should be determined by the researcher.</p>

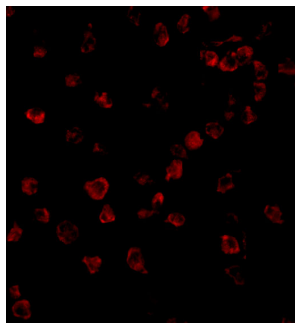
## Anti-Ipaf NLRC4 Antibody (A00525) Images



Western blot analysis of Ipaf in human PBL lysate with Ipaf antibody at 0.5 (lane A)



Immunocytochemistry of Ipaf in THP-1 cells with Ipaf antibody at 10 ug/mL.



Immunofluorescence of Ipaf in THP1 cells with Ipaf antibody at 10 ug/mL.

## Submit a product review to Biocompare.com

Submit a review of this product to Biocompare.com to receive a \$20 Amazon.com giftcard! Your reviews help your fellow scientists make the right decisions. Thank you for your contribution.



Anti-Ipaf NLRC4 Antibody