

Anti-ATG16 ATG16L1 Antibody

Catalog Number: A00526-1

About ATG16L1

Autophagy, the process of bulk degradation of cellular proteins through an autophagosomic-lysosomal pathway is important for normal growth control and may be defective in tumor cells. It is involved in the preservation of cellular nutrients under starvation conditions as well as the normal turnover of cytosolic components. This process is negatively regulated by TOR (Target of rapamycin) through phosphorylation of autophagy protein APG1. ATG16, another member of the autophagy protein family, forms a complex with the ATG5-ATG12 conjugate. This multimeric protein has been shown to be essential for autophagosome formation in both yeast and mammals and targets the ATG5-ATG12 complex to the autophagic isolation membrane during the formation of the autophagosome. Because mammalian ATG16 has seven WD-repeats in its C-terminal domain, it has been suggested that these may form a platform for further protein-protein interactions. Multiple isoforms of ATG16 are known to exist.

Overview

Product Name	Anti-ATG16 ATG16L1 Antibody
Reactive Species	Human, Mouse, Rat
Description	Boster Bio Anti-ATG16 ATG16L1 Antibody (Catalog # A00526-1). Tested in ELISA, WB, ICC, IF applications. This antibody reacts with Human, Mouse, Rat.
Application	ELISA, IF, ICC, WB
Clonality	Polyclonal
Formulation	ATG16 Antibody is supplied in PBS containing 0.02% sodium azide.
Storage Instructions	ATG16 antibody can be stored at 4°C for three months and -20°C, stable for up to one year. Avoid repeated freeze-thaw cycles. Antibodies should not be exposed to prolonged high temperatures.
Host	Rabbit
Uniprot ID	Q676U5

Technical Details

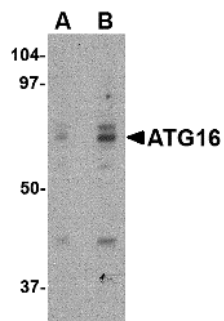
Immunogen	ATG16 antibody was raised against a 18 amino acid synthetic peptide from near the center of human ATG16. The immunogen is located within amino acids 190 - 240 of ATG16.
Predicted Reactive Species	Mouse
Isotype	IgG
Form	Liquid
Concentration	1 mg/mL
Purification	ATG16 Antibody is affinity chromatography purified via peptide column.

Suggested Dilutions

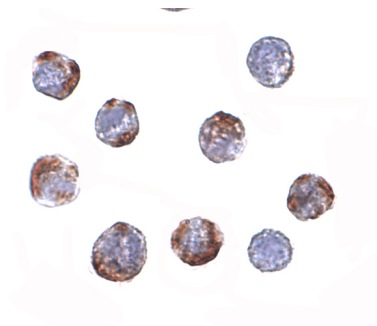
ATG16 antibody can be used for the detection of ATG16 by Western blot at 0.25 - 0.5 ug/mL. Antibody can also be used for immunocytochemistry starting at 2 ug/mL. For immunofluorescence start at 4 ug/mL.

Antibody validated: Western Blot in human samples; Immunocytochemistry in human samples and Immunofluorescence in human samples. All other applications and species not yet tested. Optimal dilutions for each application should be determined by the researcher.

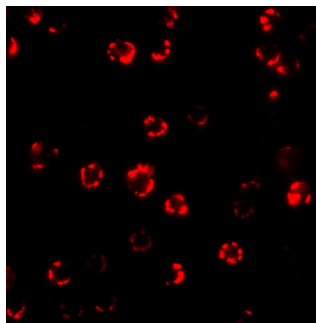
Anti-ATG16 ATG16L1 Antibody (A00526-1) Images



Western blot analysis of ATG16 in HeLa cell lysate with ATG16 antibody at (A) 0.25 and (B) 0.5 ug/mL.



Immunocytochemistry of ATG16 in HeLa cells with ATG16 antibody at 2 ug/mL.



Immunofluorescence of ATG16 in HeLa cells with ATG16 antibody at 4 ug/mL.

Submit a product review to [Biocompare.com](https://www.biocompare.com)

Submit a review of this product to [Biocompare.com](https://www.biocompare.com) to receive a \$20 Amazon.com giftcard! Your reviews help your fellow scientists make the right decisions. Thank you for your contribution.



Anti-ATG16 ATG16L1 Antibody

For Research Use Only. Not for use in diagnostic procedures.