

Anti-ATG16L Antibody

Catalog Number: A00526-2

About ATG16L1

Macroautophagy is the major inducible pathway for the general turnover of cytoplasmic constituents in eukaryotic cells, it is also responsible for the degradation of active cytoplasmic enzymes and organelles during nutrient starvation. Macroautophagy involves the formation of double-membrane bound autophagosomes which enclose the cytoplasmic constituent targeted for degradation in a membrane bound structure, which then fuse with the lysosome (or vacuole) releasing a single-membrane bound autophagic bodies which are then degraded within the lysosome (or vacuole). The APG12-APG5-APG16L complex is essential for the elongation of autophagic isolation membranes. This complex initially associates in uniform distribution with small vesicle membranes. During membrane elongation, the complex partitions, with a great concentration building on the outer side of the isolation membrane. Upon completion of the formation of the autophagosome, the APG12-APG5-APG16L dissociates from the membrane.

Overview

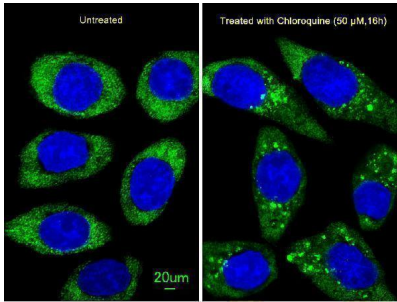
Product Name	Anti-ATG16L Antibody
Reactive Species	Human, Mouse
Description	Boster Bio Anti-ATG16L Antibody (Catalog # A00526-2). Tested in IF, WB, IHC-P application(s). This antibody reacts with Human, Mouse.
Application	IF, IHC-P, WB
Clonality	Polyclonal
Formulation	Purified polyclonal antibody supplied in PBS with 0.09% (W/V) sodium azide.
Storage Instructions	Maintain refrigerated at 2-8°C for up to 2 weeks. For long-term storage, store at -20°C in small aliquots to prevent freeze-thaw cycles.
Host	Rabbit
Uniprot ID	Q676U5

Technical Details

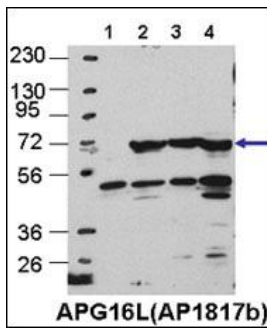
Immunogen	This ATG16L antibody is generated from rabbits immunized with a KLH conjugated synthetic peptide between 161-190 amino acids from human ATG16L.
Predicted Reactive Species	C. elegans
Recommended Detection Systems	Boster recommends Enhanced Chemiluminescent Kit with anti-Rabbit IgG (EK1002) for Western blot, and HRP Conjugated anti-Rabbit IgG Super Vision Assay Kit (SV0002-1) for IHC(P).
Cross Reactivity	No cross reactivity with other proteins.
Isotype	Rabbit IgG

Form	Liquid
Purification	This antibody is purified through a protein A column, followed by peptide affinity purification.
Suggested Dilutions	IF: 1:25 WB: 1:1000 IHC-P: 1:10-1:50

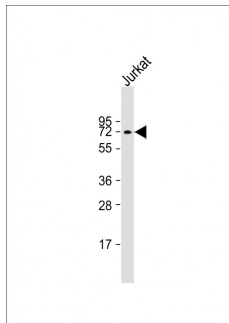
Anti-ATG16L Antibody (A00526-2) Images



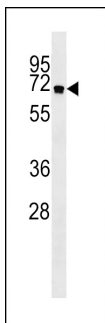
Immunofluorescent analysis of U251 cells, using ATG16L Antibody. U251 cells (right) were treated with Chloroquine (50 uM, 16h). A00526-2 was diluted at 1:25 dilution. Alexa Fluor 488-conjugated goat anti-rabbit IgG at 1:400 dilution was used as the secondary antibody (green). DAPI was used to stain the cell nuclear (blue).



Cos7, HEK293, MEF, and Hela cells, left to right, respectively. Data courtesy of Drs. Jiefei Geng and Dan Klionsky, University of Michigan.

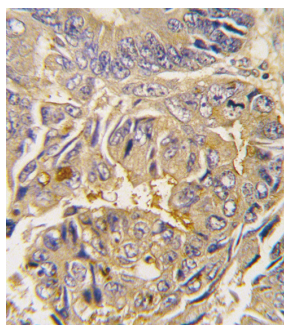
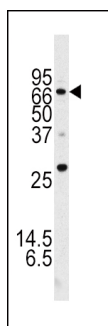


Anti-ATG16L Antibody at 1:1000 dilution + Jurkat whole cell lysate/lysates/proteins at 20 μg per lane. Secondary Goat Anti-Rabbit IgG, (H+L), Peroxidase conjugated at 1/10000 dilution. Predicted band size : 68 kDa Blocking/Dilution buffer: 5% NFD/MTBST.



APG16L Antibody (Cat. #A00526-2) western blot analysis in NCI-H460 cell line lysates (35ug/lane). This demonstrates the APG16L antibody detected the APG16L protein (arrow).

Western blot of APG16L (L92) Pab (Cat. #A00526-2) in mouse brain tissue lysate.



Formalin-fixed and paraffin-embedded human colon carcinoma tissue reacted with Autophagy APG16L antibody (L176), which was peroxidase-conjugated to the secondary antibody, followed by DAB staining. This data demonstrates the use of this antibody for immunohistochemistry; clinical relevance has not been evaluated.

Submit a product review to [Biocompare.com](https://www.biocompare.com)

Submit a review of this product to [Biocompare.com](https://www.biocompare.com) to receive a \$20 Amazon.com giftcard! Your reviews help your fellow scientists make the right decisions. Thank you for your contribution.



Anti-ATG16L Antibody

For Research Use Only. Not for use in diagnostic procedures.