

Anti-GLI1 Antibody Picoband®

Catalog Number: A00527-3

About GLI1

GLI1, also known as GLI, is a protein originally isolated in human glioblastoma. The protein is encoded by GLI1 gene. It is mapped to 12q13.3. This gene is a member of a select group of cellular genes that are genetically altered in primary human tumors. GLI1 encodes a member of the GLI-Kruppel family of zinc finger proteins in the final steps of Hedgehog signaling in normal development and disease. The encoded transcription factor is activated by the sonic hedgehog signal transduction cascade and regulates stem cell proliferation. The activity and nuclear localization of this protein is negatively regulated by p53 in an inhibitory loop. Beside, various upstream patterning signals may be integrated by the Gli proteins to direct a coherent programme of neurogenesis.

Overview

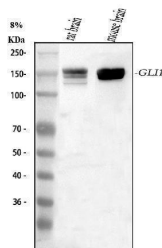
Product Name	Anti-GLI1 Antibody Picoband®
Reactive Species	Human, Mouse, Rat
Description	Boster Bio Anti-GLI1 Antibody Picoband® catalog # A00527-3. Tested in WB, ELISA applications. This antibody reacts with Human, Mouse, Rat. The brand Picoband indicates this is a premium antibody that guarantees superior quality, high affinity, and strong signals with minimal background in Western blot applications. Only our best-performing antibodies are designated as Picoband, ensuring unmatched performance.
Application	ELISA, WB
Clonality	Polyclonal
Formulation	Each vial contains 4 mg Trehalose, 0.9 mg NaCl, 0.2 mg Na ₂ HPO ₄ .
Storage Instructions	At -20°C for one year from date of receipt. After reconstitution, at 4°C for one month. It can also be aliquotted and stored frozen at -20°C for six months. Avoid repeated freezing and thawing.
Host	Rabbit
Uniprot ID	P08151

Technical Details

Immunogen	E.coli-derived human GLI1 recombinant protein (Position: Y800-Q1057). Human GLI1 shares 79.8% amino acid (aa) sequence identity with mouse GLI1.
Recommended Detection Systems	Boster recommends Enhanced Chemiluminescent Kit with anti-Rabbit IgG (EK1002) for Western blot.
Form	Lyophilized
Concentration	Adding 0.2 ml of distilled water will yield a concentration of 500 µg/ml.

Purification	Immunogen affinity purified.
Suggested Dilutions	Western blot, 0.25-0.5 ug/ml, Mouse, Rat ELISA, 0.1-0.5 ug/ml, -

Anti-GLI1 Antibody Picoband® (A00527-3) Images



Western blot analysis of GLI1 using anti-GLI1 antibody (A00527-3). Electrophoresis was performed on a 5-20% SDS-PAGE gel at 70V (Stacking gel) / 90V (Resolving gel) for 2-3 hours. The sample well of each lane was loaded with 30 ug of sample under reducing conditions. Lane 1: rat brain tissue lysates, Lane 2: mouse brain tissue lysates. After electrophoresis, proteins were transferred to a nitrocellulose membrane at 150 mA for 50-90 minutes. Blocked the membrane with 5% non-fat milk/TBS for 1.5 hour at RT. The membrane was incubated with rabbit anti-GLI1 antigen affinity purified polyclonal antibody (Catalog # A00527-3) at 0.5 ug/mL overnight at 4°C, then washed with TBS-0.1%Tween 3 times with 5 minutes each and probed with a goat anti-rabbit IgG-HRP secondary antibody at a dilution of 1:5000 for 1.5 hour at RT. The signal is developed using an Enhanced Chemiluminescent detection (ECL) kit (Catalog # EK1002) with Tanon 5200 system. A specific band was detected for GLI1 at approximately 150 kDa. The expected band size for GLI1 is at 118 kDa.

Submit a product review to Biocompare.com

Submit a review of this product to Biocompare.com to receive a \$20 Amazon.com giftcard! Your reviews help your fellow scientists make the right decisions. Thank you for your contribution.



Anti-GLI1 Antibody

For Research Use Only. Not for use in diagnostic procedures.