

Anti-CYP3A5 Antibody (C-term)

Catalog Number: A00530-1

About CYP3A5

CYP3A5 is a member of the cytochrome P450 superfamily of enzymes. The cytochrome P450 proteins are monooxygenases which catalyze many reactions involved in drug metabolism and synthesis of cholesterol, steroids and other lipids. This protein localizes to the endoplasmic reticulum and its expression is induced by glucocorticoids and some pharmacological agents. The enzyme metabolizes drugs such as nifedipine and cyclosporine as well as the steroid hormones testosterone, progesterone and androstenedione.

Overview

Product Name	Anti-CYP3A5 Antibody (C-term)
Reactive Species	Human
Description	Boster Bio Anti-CYP3A5 Antibody (C-term) (Catalog # A00530-1). Tested in WB, IF, IHC-P application(s). This antibody reacts with Human.
Application	IF, IHC-P, WB
Clonality	Polyclonal
Formulation	Purified polyclonal antibody supplied in PBS with 0.09% (W/V) sodium azide.
Storage Instructions	Maintain refrigerated at 2-8°C for up to 2 weeks. For long-term storage, store at -20°C in small aliquots to prevent freeze-thaw cycles.
Host	Rabbit
Uniprot ID	P20815

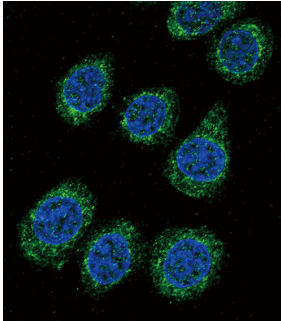
Technical Details

Immunogen	This CYP3A5 antibody is generated from rabbits immunized with a KLH conjugated synthetic peptide between 476-502 amino acids from the C-terminal region of human CYP3A5.
Predicted Reactive Species	C. elegans
Recommended Detection Systems	Boster recommends Enhanced Chemiluminescent Kit with anti-Rabbit IgG (EK1002) for Western blot, and HRP Conjugated anti-Rabbit IgG Super Vision Assay Kit (SV0002-1) for IHC(P).
Cross Reactivity	No cross reactivity with other proteins.
Isotype	Rabbit IgG
Form	Liquid
Purification	This antibody is prepared by Saturated Ammonium Sulfate (SAS) precipitation followed by dialysis against PBS.

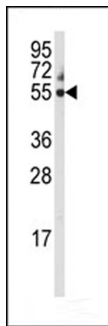
Suggested Dilutions

IF: 1:10-1:50
WB: 1:1000
IHC-P: 1:10-1:50

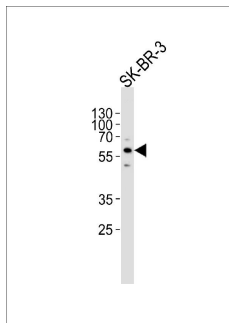
Anti-CYP3A5 Antibody (C-term) (A00530-1) Images



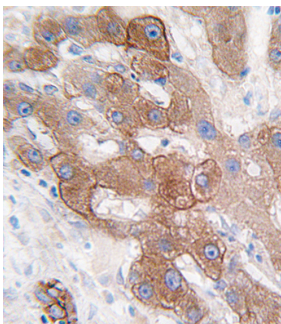
Confocal immunofluorescent analysis of CYP3A5 Antibody (C-term) with 293 cell followed by Alexa Fluor 488-conjugated goat anti-rabbit IgG (green). DAPI was used to stain the cell nuclear (blue).



Western blot analysis of anti-CYP3A5 Antibody (C-term) (Cat. #A00530-1) in 293 cell line lysates (35ug/lane). CYP3A5 (arrow) was detected using the purified Pab.



Western blot analysis of lysate from SK-BR-3 cell line, using CYP3A5 Antibody (C-term) (Cat. #A00530-1). A00530-1 was diluted at 1:1000. A goat anti-rabbit IgG H&L (HRP) at 1:5000 dilution was used as the secondary antibody. Lysate at 35ug.



Formalin-fixed and paraffin-embedded human hepatocarcinoma tissue reacted with CYP3A5 antibody (C-term), which was peroxidase-conjugated to the secondary antibody, followed by DAB staining. This data demonstrates the use of this antibody for immunohistochemistry; clinical relevance has not been evaluated.

Submit a product review to Biocompare.com

Submit a review of this product to Biocompare.com to receive a \$20 Amazon.com giftcard! Your reviews help your fellow scientists make the right decisions. Thank you for your contribution.



Anti-CYP3A5 Antibody (C-term)