

Anti-LSD1 KDM1A Antibody

Catalog Number: A00532

About KDM1

Histone modifications mediate changes in gene expression by altering chromatin structure or by serving as a platform to recruit other proteins. LSD1 is a recently discovered amine oxidase that catalyzes the lysine-specific demethylation of histone proteins via an FAD-dependent oxidative reaction. Methylation on histone H3-K9 is thought to play an important role in heterochromatin formation, while methylation on arginine and some lysine residues (such as H3-K4) is associated with active transcription. LSD1 associates with various proteins, including HDAC1/2, CoREST, and BHC80, that act to regulate LSD1 activity in vivo, and in a histone H3-K4-specific methylase complex that is involved in transcriptional regulation. Experiments have shown that CoREST, a SANT domain-containing corepressor acts to enhance LSD1 activity, while BHC80, a PHD domain-containing protein, inhibits CoREST/LSD1 activity in vitro. LSD1-mediated histone demethylation thus may have significant effects on gene expression.

Overview

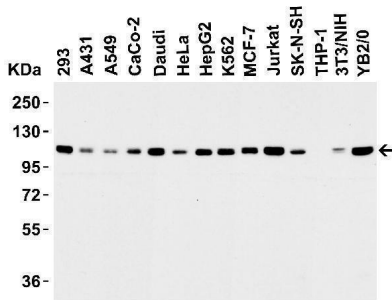
Product Name	Anti-LSD1 KDM1A Antibody
Reactive Species	Human, Mouse, Rat
Description	Boster Bio Anti-LSD1 KDM1A Antibody (Catalog # A00532). Tested in ELISA, WB, IHC-P, IF applications. This antibody reacts with Human, Mouse, Rat.
Application	ELISA, IF, IHC-P, WB
Clonality	Polyclonal
Formulation	LSD1 Antibody is supplied in PBS containing 0.02% sodium azide.
Storage Instructions	LSD1 antibody can be stored at 4°C for three months and -20°C, stable for up to one year. Avoid repeated freeze-thaw cycles. Antibodies should not be exposed to prolonged high temperatures.
Host	Rabbit
Uniprot ID	O60341

Technical Details

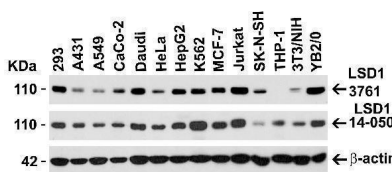
Immunogen	Anti-LSD1 antibody was raised against a peptide corresponding to 17 amino acids near the amino terminus of human LSD1. The immunogen is located within amino acids 40-90 of LSD1.
Predicted Reactive Species	Mouse
Isotype	IgG
Form	Liquid
Concentration	1 mg/mL

Purification	LSD1 Antibody is affinity chromatography purified via peptide column.
Suggested Dilutions	WB: 0.2 - 2 ug/mL; IHC-P: 2 ug/mL; IF: 20 ug/mL. Antibody validated: Western Blot in human, mouse and rat samples; Immunohistochemistry and Immunofluorescence in human samples. All other applications and species not yet tested. Optimal dilutions for each application should be determined by the researcher.

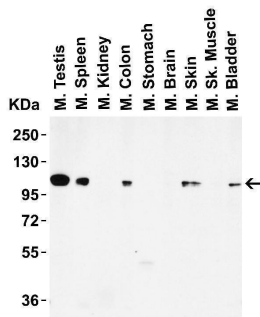
Anti-LSD1 KDM1A Antibody (A00532) Images



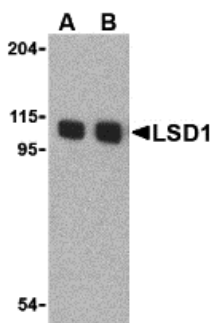
Western Blot Validation in Cell Lines Loading: 15 ug of lysates per lane. Antibodies: LSD1 A00532 (0.2 ug/mL), 1h incubation at RT in 5% NFDm/TBST. Secondary: Goat anti-rabbit IgG HRP conjugate at 1:10000 dilution.



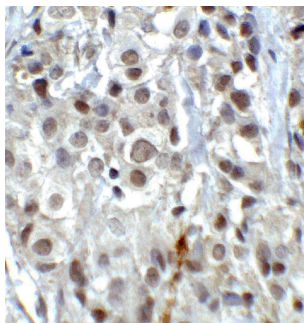
Independent Antibody Validation (IAV) via Protein Expression Profile in Cell Lines Loading: 15 ug of lysates per lane. Antibodies: LSD1 A00532 (0.2 ug/mL), LSD1 14-050 (1 ug/mL), beta-actin 3779 (1 ug/mL), 1h incubation at RT in 5% NFDm/TBST. Secondary: Goat anti-rabbit IgG HRP conjugate at 1:10000 dilution.



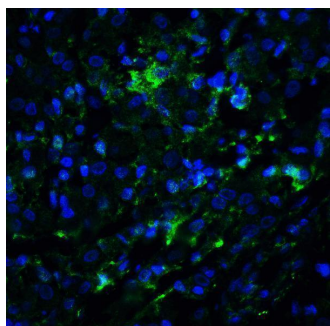
Western Blot Validation in Mouse Tissues Loading: 15 ug of lysates per lane. Antibodies: LSD1 A00532 (0.2 ug/mL), 1h incubation at RT in 5% NFDm/TBST. Secondary: Goat anti-rabbit IgG HRP conjugate at 1:10000 dilution.



Western Blot Validation in Mouse P815 Cell Lines Loading: 15 ug of lysates per lane. Antibodies: LSD1 A00532, (A: 1 ug/mL, B: 2 ug/mL), 1h incubation at RT in 5% NFDm/TBST. Secondary: Goat anti-rabbit IgG HRP conjugate at 1:10000 dilution.



Immunohistochemistry Validation of LSD1 in Human Breast Carcinoma Tissue Immunohistochemical analysis of paraffin-embedded human breast carcinoma Tissue using anti-LSD1 antibody (A00532) at 2 ug/ml. Tissue was fixed with formaldehyde and blocked with 10% serum for 1 h at RT; antigen retrieval was by heat mediation with a citrate buffer (pH6). Samples were incubated with primary antibody overnight at 4°C. A goat anti-rabbit IgG H&L (HRP) at 1/250 was used as secondary. Counter stained with Hematoxylin.



Immunofluorescence Validation of LSD1 in human breast carcinoma Tissue Immunofluorescent analysis of 4% paraformaldehyde-fixed human breast carcinoma Tissue labeling LSD1 with A00532 at 20 ug/mL, followed by goat anti-rabbit IgG secondary antibody at 1/500 dilution (green/blue).

Submit a product review to [Biocompare.com](https://www.biocompare.com)

Submit a review of this product to [Biocompare.com](https://www.biocompare.com) to receive a \$20 Amazon.com giftcard! Your reviews help your fellow scientists make the right decisions. Thank you for your contribution.



Anti-LSD1 KDM1A Antibody

For Research Use Only. Not for use in diagnostic procedures.