

Anti-CXCL1 Antibody

Catalog Number: A00533-2

About CXCL1

CXCL1(Chemokine, CXC motif, Ligand 1), also called GRO1, SCYB1, GROA or MGSA, is a small cytokine belonging to the CXC chemokine family that was previously called GRO1 oncogene, GROalpha, KC, Neutrophil-activating protein 3(NAP-3) and melanoma growth stimulating activity, alpha(MSGA-alpha). In humans, this protein is encoded by the CXCL1 gene. The CXCL1 gene is mapped on 4q13.3. CXCL1 is secreted by human melanoma cells, has mitogenic properties and is implicated in melanoma pathogenesis. CXCL1 is expressed by macrophages, neutrophils and epithelial cells, and has neutrophil chemoattractant activity. CXCL1 plays a role in spinal cord development by inhibiting the migration of oligodendrocyte precursors and is involved in the processes of angiogenesis, inflammation, wound healing, and tumorigenesis. Signaling through Cxcr2, Cxcl1 inhibited oligodendrocyte precursor migration. The migrational arrest was rapid, reversible, and concentration dependent, and it reflected enhanced cell/substrate interactions. White matter expression of Cxcl1 was temporospatially regulated. Others contribute to aggressive growth selectivity in the lung. Among the lung metastasis signature genes identified, several, including CXCL1, were functionally validated.

Overview

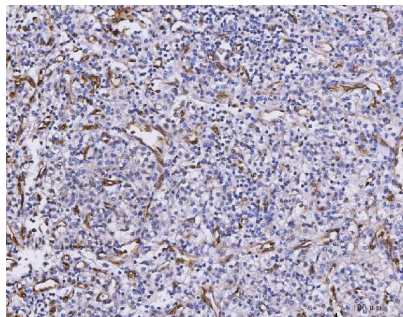
Product Name	Anti-CXCL1 Antibody
Reactive Species	Human
Description	Boster Bio Anti-CXCL1 Antibody catalog # A00533-2. Tested in ELISA, IHC applications. This antibody reacts with Human.
Application	ELISA, IHC
Clonality	Polyclonal
Formulation	Each vial contains 4 mg Trehalose, 0.9 mg NaCl, 0.2 mg Na ₂ HPO ₄ .
Storage Instructions	At -20°C for one year from date of receipt. After reconstitution, at 4°C for one month. It can also be aliquotted and stored frozen at -20°C for six months. Avoid repeated freezing and thawing.
Host	Rabbit
Uniprot ID	P09341

Technical Details

Immunogen	E.coli-derived human CXCL1 recombinant protein (Position: A35-N107).
Recommended Detection Systems	Boster recommends HRP Conjugated anti-Rabbit IgG Super Vision Assay Kit (SV0002-1) for IHC(P).
Cross Reactivity	No cross-reactivity with other proteins.
Isotype	Rabbit IgG
Form	Lyophilized

Concentration	Adding 0.2 ml of distilled water will yield a concentration of 500 µg/ml.
Purification	Immunogen affinity purified.
Suggested Dilutions	Immunohistochemistry(Paraffin-embedded Section), 2-5 ug/ml, Human ELISA, 0.1-0.5 ug/ml, -

Anti-CXCL1 Antibody (A00533-2) Images



IHC analysis of CXCL1 using anti-CXCL1 antibody (A00533-2). CXCL1 was detected in a paraffin-embedded section of human glioma tissue. Heat mediated antigen retrieval was performed in EDTA buffer (pH 8.0, epitope retrieval solution). The tissue section was blocked with 10% goat serum. The tissue section was then incubated with 2 ug/ml rabbit anti-CXCL1 Antibody (A00533-2) overnight at 4°C. Peroxidase Conjugated Goat Anti-rabbit IgG was used as secondary antibody and incubated for 30 minutes at 37°C. The tissue section was developed using HRP Conjugated Rabbit IgG Super Vision Assay Kit (Catalog # SV0002) with DAB as the chromogen.

Submit a product review to Biocompare.com

Submit a review of this product to Biocompare.com to receive a \$20 Amazon.com giftcard! Your reviews help your fellow scientists make the right decisions. Thank you for your contribution.



Anti-CXCL1 Antibody

For Research Use Only. Not for use in diagnostic procedures.