

Anti-MLKL (phospho-S345) Antibody

Catalog Number: A00535S345

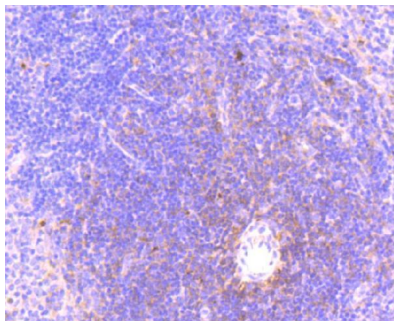
Overview

Product Name	Anti-MLKL (phospho-S345) Antibody
Reactive Species	Mouse
Description	Boster Bio Anti-MLKL (phospho-S345) Antibody catalog # A00535S345. Tested in IHC applications. This antibody reacts with Mouse.
Application	IHC
Clonality	Polyclonal
Formulation	Rabbit IgG, 1mg/ml in PBS with 0.02% sodium azide, 50% glycerol, pH7.2
Storage Instructions	Store at -20°C for one year. For short term storage and frequent use, store at 4°C for up to one month. Avoid repeated freeze-thaw cycles.
Host	Rabbit
Uniprot ID	Q9D2Y4

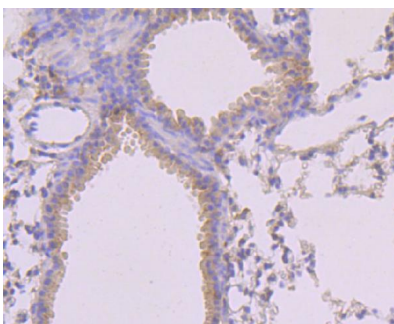
Technical Details

Immunogen	Synthetic phospho-peptide corresponding to residues surrounding Ser345 of human MLKL.
Isotype	IgG
Form	Liquid
Concentration	1 mg/ml
Purification	ProA affinity purified
Suggested Dilutions	IHC: 1:50-1:100

Anti-MLKL (phospho-S345) Antibody (A00535S345) Images



Immunohistochemical analysis of paraffin-embedded mouse spleen tissue using anti-MLKL (phospho S345) antibody. Counter stained with hematoxylin.



Immunohistochemical analysis of paraffin-embedded mouse lung tissue using anti-MLKL (phospho S345) antibody. Counter stained with hematoxylin.

Submit a product review to [Biocompare.com](https://www.biocompare.com)

Submit a review of this product to [Biocompare.com](https://www.biocompare.com) to receive a \$20 Amazon.com giftcard! Your reviews help your fellow scientists make the right decisions. Thank you for your contribution.



Anti-MLKL (phospho-S345) Antibody

For Research Use Only. Not for use in diagnostic procedures.