

Anti-Exonuclease 1/EXO1 Antibody Picoband®

Catalog Number: A00536-3

About EXO1

Exonuclease 1 is an enzyme that in humans is encoded by the EXO1 gene. It is mapped to 1q43. This gene encodes a protein with 5' to 3' exonuclease activity as well as an RNase H activity. It is similar to the *Saccharomyces cerevisiae* protein Exo1 which interacts with Msh2 and which is involved in mismatch repair and recombination. Alternative splicing of this gene results in three transcript variants encoding two different isoforms.

Overview

Product Name	Anti-Exonuclease 1/EXO1 Antibody Picoband®
Reactive Species	Human
Description	Boster Bio Anti-Exonuclease 1/EXO1 Antibody Picoband® catalog # A00536-3. Tested in ELISA, Flow Cytometry, IP, IF, ICC, WB applications. This antibody reacts with Human. The brand Picoband indicates this is a premium antibody that guarantees superior quality, high affinity, and strong signals with minimal background in Western blot applications. Only our best-performing antibodies are designated as Picoband, ensuring unmatched performance.
Application	ELISA, Flow Cytometry, IP, IF, ICC, WB
Clonality	Polyclonal
Formulation	Each vial contains 4 mg Trehalose, 0.9 mg NaCl, 0.2 mg Na ₂ HPO ₄ .
Storage Instructions	At -20°C for one year from date of receipt. After reconstitution, at 4°C for one month. It can also be aliquotted and stored frozen at -20°C for six months. Avoid repeated freezing and thawing.
Host	Rabbit
Uniprot ID	Q9UQ84

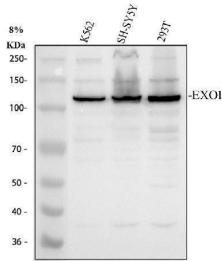
Technical Details

Immunogen	E.coli-derived human Exonuclease 1/EXO1 recombinant protein (Position: Q25-Q846).
Recommended Detection Systems	Boster recommends Enhanced Chemiluminescent Kit with anti-Rabbit IgG (EK1002) for Western blot, and HRP Conjugated anti-Rabbit IgG Super Vision Assay Kit (SV0002-1) for ICC.
Cross Reactivity	No cross-reactivity with other proteins.
Isotype	Rabbit IgG
Form	Lyophilized
Concentration	Adding 0.2 ml of distilled water will yield a concentration of 500 µg/ml.
Purification	Immunogen affinity purified.

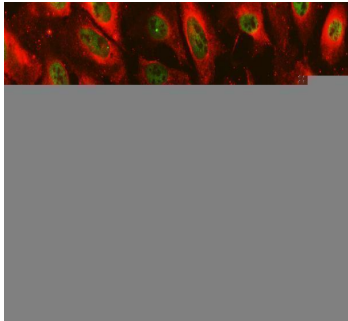
Suggested Dilutions

Western blot, 0.25-0.5 ug/ml, Human
Immunocytochemistry/Immunofluorescence, 5 ug/ml, Human
Immunoprecipitation, 0.5-2 ug/ml, Human
Flow Cytometry(Fixed), 1-3 ug/1x10⁶ cells, Human
ELISA, 0.1-0.5 ug/ml, -

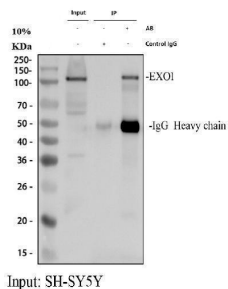
Anti-Exonuclease 1/EXO1 Antibody Picoband® (A00536-3) Images



Western blot analysis of EXO1 using anti-EXO1 antibody (A00536-3). Electrophoresis was performed on a 8% SDS-PAGE gel at 80V (Stacking gel) / 120V (Resolving gel) for 2 hours. The sample well of each lane was loaded with 30 ug of sample under reducing conditions. Lane 1: human K562 whole cell lysates, Lane 2: human SH-SY5Y whole cell lysates, Lane 3: human 293T whole cell lysates. After electrophoresis, proteins were transferred to a nitrocellulose membrane at 150 mA for 50-90 minutes. Blocked the membrane with 5% non-fat milk/TBS for 1.5 hour at RT. The membrane was incubated with rabbit anti-EXO1 antigen affinity purified polyclonal antibody (A00536-3) at 0.5 ug/mL overnight at 4°C, then washed with TBS-0.1%Tween 3 times with 5 minutes each and probed with a goat anti-rabbit IgG-HRP secondary antibody (Catalog # BA1054) at a dilution of 1:5000 for 1.5 hour at RT. The signal is developed using an ECL Plus Western Blotting Substrate (Catalog # AR1196-200) with Tanon 5200 system. A specific band was detected for EXO1 at approximately 120 kDa. The expected band size for EXO1 is at 94 kDa.



IF analysis of EXO1 using anti-EXO1 antibody (A00536-3) and anti-Tubulin Alpha antibody (M03989-3). EXO1 was detected in immunocytochemical section of U2OS cell. Enzyme antigen retrieval was performed using IHC enzyme antigen retrieval reagent (AR0022) for 15 mins. The cells were blocked with 10% goat serum. And then incubated with 5 ug/mL rabbit anti-EXO1 Antibody (A00536-3) and mouse anti-Tubulin Alpha antibody (M03989-3) overnight at 4°C. DyLight®488 Conjugated Goat Anti-Rabbit IgG (BA1127) and Cy3 Conjugated Goat Anti-Mouse IgG (BA1031) were used as secondary antibody at 1:500 dilution and incubated for 30 minutes at 37°C. Visualize using a fluorescence microscope and filter sets appropriate for the label used.



Immunoprecipitating (IP) EXO1 in SH-SY5Y whole cell lysate. Western blot analysis of EXO1 using anti-EXO1 antibody (A00536-3); Lane 1: SH-SY5Y whole cell lysates (30ug); Lane 2: Rabbit control IgG instead of anti-EXO1 antibody in SH-SY5Y whole cell lysate; Lane 3: anti-EXO1 antibody (2ug) + SH-SY5Y whole cell lysate (500ug). After electrophoresis, proteins were transferred to a membrane. Then the membrane was incubated with rabbit anti-EXO1 antigen affinity purified polyclonal antibody (A00536-3) at a dilution of 0.5 ug/mL and probed with a goat anti-rabbit IgG-HRP secondary antibody (Catalog # BA1054). The signal is developed using ECL Plus Western Blotting Substrate (Catalog # AR1196-200). A specific band was detected for EXO1 at approximately 120 kDa. The expected band size for EXO1 is at 94 kDa.

Submit a review of this product to Biocompare.com to receive a \$20 Amazon.com giftcard! Your reviews help your fellow scientists make the right decisions. Thank you for your contribution.



Anti-Exonuclease 1/EXO1 Antibody

For Research Use Only. Not for use in diagnostic procedures.