

Anti-ErbB-3 (S1285) Antibody

Catalog Number: A00539S1285

Overview

Product Name	Anti-ErbB-3 (S1285) Antibody
Reactive Species	Human, Mouse, Rat
Description	Boster Bio Anti-ErbB-3 (S1285) Antibody catalog # A00539S1285. Tested in WB,IHC,IF applications. This antibody reacts with Human,Mouse,Rat.
Application	IF, IHC, WB
Clonality	Polyclonal
Formulation	Rabbit IgG, 1mg/ml in PBS with 0.02% sodium azide, 50% glycerol, pH7.2
Storage Instructions	Store at -20°C for one year. For short term storage and frequent use, store at 4°C for up to one month. Avoid repeated freeze-thaw cycles.
Host	Rabbit
Uniprot ID	P21860

Technical Details

Immunogen	Synthetic peptide, corresponding to amino acids 1250-1300 of Human ErbB-3.
Isotype	IgG
Form	Liquid
Concentration	1 mg/ml
Purification	The antibody was affinity-purified from rabbit antiserum by affinity-chromatography using epitope-specific immunogen and the purity is > 95% (by SDS-PAGE).
Suggested Dilutions	WB: 1:500-1:1000 IHC: 1:50-1:200 IF: 1:50-1:200

Anti-ErbB-3 (S1285) Antibody (A00539S1285) Images

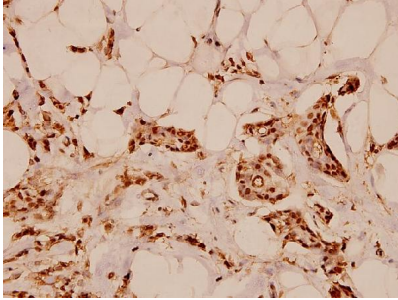


Figure 2. Immunohistochemistry validation of ERBB3 using Anti-ErbB-3 (S1285) Antibody (A00539S1285).

Immunohistochemistry (IHC) analyzes of ErbB-3 (S1285) pAb in paraffin-embedded human breast carcinoma tissue at 1:100.

For more protocol information of IHC

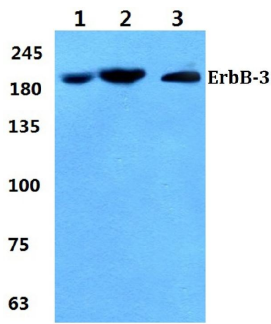


Figure 1. Western blotting validation for Anti-ErbB-3 (S1285) Antibody A00539S1285

Western blot (WB) analysis of ErbB-3 (S1285) polyclonal antibody at 1:500 dilution

Lane1:MCF-7 cell lysate

Lane2:Mouse brain tissue lysate

Lane3:H9C2 cell lysate

Electrophoresis was performed on a SDS-PAGE gel. To determine SDS-PAGE gel concentration

Submit a product review to Biocompare.com

Submit a review of this product to Biocompare.com to receive a \$20 Amazon.com giftcard! Your reviews help your fellow scientists make the right decisions. Thank you for your contribution.



Anti-ErbB-3 (S1285) Antibody