

Anti-ERBB3 (phospho-Y1328) Antibody

Catalog Number: A00539Y1328

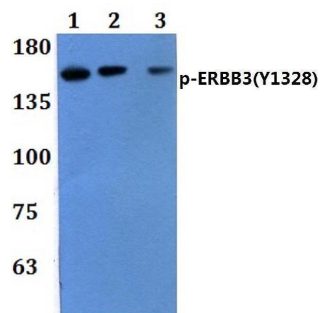
Overview

Product Name	Anti-ERBB3 (phospho-Y1328) Antibody
Reactive Species	Human, Mouse
Description	Boster Bio Anti-ERBB3 (phospho-Y1328) Antibody catalog # A00539Y1328. Tested in WB applications. This antibody reacts with Human, Mouse.
Application	WB
Clonality	Polyclonal
Formulation	Rabbit IgG, 1mg/ml in PBS with 0.02% sodium azide, 50% glycerol, pH7.2
Storage Instructions	Store at -20°C for one year. For short term storage and frequent use, store at 4°C for up to one month. Avoid repeated freeze-thaw cycles.
Host	Rabbit
Uniprot ID	P21860

Technical Details

Immunogen	A synthetic peptide corresponding to residues in Human ERBB3 around the phosphorylation site of Y1328.
Isotype	IgG
Form	Liquid
Concentration	1 mg/ml
Purification	The antibody was affinity-purified from rabbit antiserum by affinity-chromatography using epitope-specific immunogen and the purity is > 95% (by SDS-PAGE).
Suggested Dilutions	WB: 1:500-1:1000

Anti-ERBB3 (phospho-Y1328) Antibody (A00539Y1328) Images



Western blot (WB) analysis of p-ERBB3(Y1328) polyclonal antibody pAb at 1:500 dilution Lane1:MCF-7 treated with EGF(0.1ng/ml) 30 min whole cell lysate Lane2:THP-1 treated with EGF(0.1ng/ml) 30 min whole cell lysate Lane3:Raw264.7 treated with EGF(0.1ng/ml) 30 min whole cell lysate

Submit a product review to Biocompare.com

Submit a review of this product to Biocompare.com to receive a \$20 Amazon.com giftcard! Your reviews help your fellow scientists make the right decisions. Thank you for your contribution.



Anti-ERBB3 (phospho-Y1328) Antibody

For Research Use Only. Not for use in diagnostic procedures.