

Anti-Phospho-PR (S190) PGR Antibody

Catalog Number: A00541S190-1

About PGR

Transcription factor which regulates the expression of several rod-specific genes, including RHO and PDE6B By similarity.

Swaroop A., Proc. Natl. Acad. Sci. U.S.A. 89:266-270(1992).

Farjo Q., Genomics 45:395-401(1997).

Heilig R., Nature 421:601-607(2003)

Overview

| | |
|----------------------|--|
| Product Name | Anti-Phospho-PR (S190) PGR Antibody |
| Reactive Species | Human, Monkey |
| Description | Boster Bio Anti-Phospho-PR (S190) PGR Antibody catalog # A00541S190-1. Tested in ELISA, IHC, WB applications. This antibody reacts with Human, Monkey. |
| Application | ELISA, IHC, WB |
| Clonality | Polyclonal |
| Formulation | Liquid in PBS containing 50% glycerol, 0.5% BSA and 0.02% sodium azide. |
| Storage Instructions | Store at -20°C for one year. For short term storage and frequent use, store at 4°C for up to one month. Avoid repeated freeze-thaw cycles. |
| Host | Rabbit |
| Uniprot ID | P06401 |

Technical Details

| | |
|----------------------------|---|
| Immunogen | Synthesized peptide derived from human PR around the phosphorylation site of S190. |
| Predicted Reactive Species | Canine, Monkey |
| Isotype | IgG |
| Form | Liquid |
| Concentration | 1 mg/ml |
| Purification | The antibody was affinity-purified from rabbit antiserum by affinity-chromatography using epitope-specific immunogen. |
| Suggested Dilutions | Dilute the sample so that the expected range of concentrations fall within the detection range of this kit. |

If the expected range of concentration is unknown, a pilot test should be conducted to decide the optimal dilution ratio for your samples.

Some PubMed article(s) citing the expression level of this target are as follows:

Boster Bio's internal QC testing used:

WB 1:500-1:2000

IHC 1:100-1:300

ELISA 1:20000

Anti-Phospho-PR (S190) PGR Antibody (A00541S190-1) Images

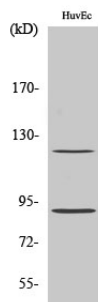


Figure 1. Western blotting validation for Anti-Phospho-PR (S190) PGR Antibody A00541S190-1

Western Blot (WB) analysis of specific cells using Phospho-PR (S190) polyclonal antibody. Electrophoresis was performed on a SDS-PAGE gel. To determine SDS-PAGE gel concentration

Submit a product review to Biocompare.com

Submit a review of this product to Biocompare.com to receive a \$20 Amazon.com giftcard! Your reviews help your fellow scientists make the right decisions. Thank you for your contribution.



Anti-Phospho-PR (S190) PGR Antibody