

## Anti-AR (phospho-S650) Antibody

Catalog Number: A00542S650

### Overview

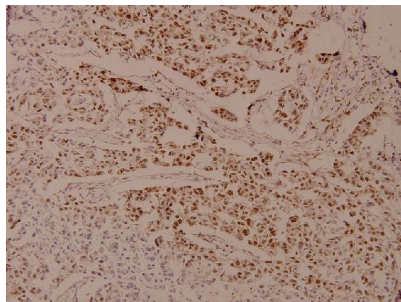
Product Name	Anti-AR (phospho-S650) Antibody
Reactive Species	Human, Rat
Description	Boster Bio Anti-AR (phospho-S650) Antibody catalog # A00542S650. Tested in IHC applications. This antibody reacts with Human,Rat.
Application	IHC
Clonality	Polyclonal
Formulation	Rabbit IgG, 1mg/ml in PBS with 0.02% sodium azide, 50% glycerol, pH7.2
Storage Instructions	Store at -20°C for one year. For short term storage and frequent use, store at 4°C for up to one month. Avoid repeated freeze-thaw cycles.
Host	Rabbit
Uniprot ID	P10275

### Technical Details

Immunogen	Synthetic phosphopeptide derived from human AR around the phosphorylation site of Serine 650.
Isotype	IgG
Form	Liquid
Concentration	1 mg/ml
Purification	The antibody was affinity-purified from rabbit antiserum by affinity-chromatography using epitope-specific immunogen and the purity is > 95% (by SDS-PAGE).
Suggested Dilutions	IHC: 1:50-1:200

## Anti-AR (phospho-S650) Antibody (A00542S650) Images

---



Immunohistochemistry (IHC) analyzes of p-AR (S650) pAb in paraffin-embedded human breast carcinoma tissue at 1:100.

### Submit a product review to Biocompare.com

---

Submit a review of this product to Biocompare.com to receive a \$20 Amazon.com giftcard! Your reviews help your fellow scientists make the right decisions. Thank you for your contribution.



Anti-AR (phospho-S650) Antibody

For Research Use Only. Not for use in diagnostic procedures.