

Anti-Cyclin E1 (Phospho-T77) CCNE1 Antibody

Catalog Number: A00543T77

About CCNE1

Essential for the control of the cell cycle at the G1/S (start) transition.

Charles Spruck, Cancer Res., Jul 2006; 66: 7355 - 7360.

Nathalie Cueille, J. Virol., Sep 1998; 72: 7255 - 7262.

Wentao Deng, J. Virol., Dec 2004; 78: 13954 - 13965.

Tianlin Ma, PNAS, Jan 1999; 96: 382.

Overview

Product Name	Anti-Cyclin E1 (Phospho-T77) CCNE1 Antibody
Reactive Species	Human
Description	Boster Bio Anti-Cyclin E1 (Phospho-T77) CCNE1 Antibody catalog # A00543T77. Tested in WB,ICC/IF,IHC applications. This antibody reacts with Human.
Application	IF, IHC, ICC, WB
Clonality	Polyclonal
Formulation	Rabbit IgG, 1mg/ml in PBS with 0.02% sodium azide, 50% glycerol, pH7.2
Storage Instructions	Store at -20°C for one year. For short term storage and frequent use, store at 4°C for up to one month. Avoid repeated freeze-thaw cycles.
Host	Rabbit
Uniprot ID	P24864

Technical Details

Immunogen	Synthesized peptide derived from human Cyclin E1.
Predicted Reactive Species	Canine, Monkey
Isotype	IgG
Form	Liquid
Concentration	1 mg/ml
Purification	ProA affinity purified
Suggested Dilutions	Dilute the sample so that the expected range of concentrations fall within the detection range of this

kit.

If the expected range of concentration is unknown, a pilot test should be conducted to decide the optimal dilution ratio for your samples.

Some PubMed article(s) citing the expression level of this target are as follows:

Boster Bio's internal QC testing used:

WB: 1:1,000

ICC: 1:50-1:200

IHC: 1:50-1:200

Anti-Cyclin E1 (Phospho-T77) CCNE1 Antibody (A00543T77) Images

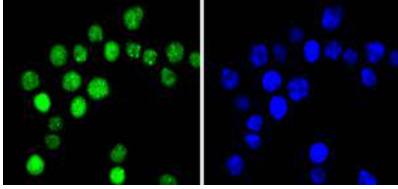


Figure 1. Immunocytochemistry staining of CCNE1 using Anti-Cyclin E1 (Phospho-T77) CCNE1 Antibody (A00543T77).

ICC staining Phospho-Cyclin E1(T77) in SW480 cells (green). The nuclear counter stain is DAPI (blue). Cells were fixed in paraformaldehyde

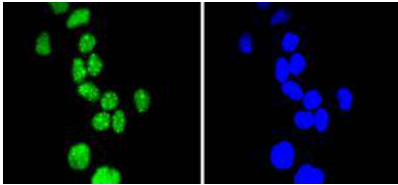


Figure 2. Immunocytochemistry staining of CCNE1 using Anti-Cyclin E1 (Phospho-T77) CCNE1 Antibody (A00543T77).

ICC staining Phospho-Cyclin E1(T77) in HeLa cells (green). The nuclear counter stain is DAPI (blue). Cells were fixed in paraformaldehyde

Submit a product review to Biocompare.com

Submit a review of this product to Biocompare.com to receive a \$20 Amazon.com giftcard! Your reviews help your fellow scientists make the right decisions. Thank you for your contribution.



Anti-Cyclin E1 (Phospho-T77) CCNE1 Antibody