

## Anti-ZEB1 Antibody

Catalog Number: A00548

### About ZEB1

ZEB1, initially identified as the delta-crystallin enhancer binding protein delta EF1, is a DNA-binding protein that binds to a modified E-box sequence and has been implicated in postgastrulation embryogenesis. ZEB1 binds to the promoter of several hemopoietic genes, including interleukin-2, CD4, GATA-3, and alpha-integrin, and mice in which ZEB1 has been targeted show thymic atrophy, and severe defects in lymphocyte differentiation. Recent evidence suggests that ZEB1 also regulates the accumulation of adipose tissue and may play a role in obesity. Mutations in this gene have been associated with late-onset Fuchs endothelial corneal dystrophy.

### Overview

Product Name	Anti-ZEB1 Antibody
Reactive Species	Human
Description	Boster Bio Anti-ZEB1 Antibody (Catalog # A00548). Tested in ELISA, WB, IHC-P, ICC, IF applications. This antibody reacts with Human.
Application	ELISA, IF, IHC-P, ICC, WB
Clonality	Polyclonal
Formulation	ZEB1 Antibody is supplied in PBS containing 0.02% sodium azide.
Storage Instructions	ZEB1 antibody can be stored at 4°C up to one year. Antibodies should not be exposed to prolonged high temperatures.
Host	Rabbit
Uniprot ID	P37275

### Technical Details

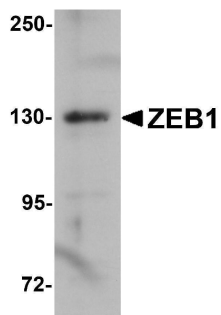
Immunogen	ZEB1 antibody was raised against a 15 amino acid synthetic peptide near the center of human ZEB1. The immunogen is located within amino acids 530 - 580 of ZEB1.
Predicted Reactive Species	Mouse
Cross Reactivity	Multiple isoforms of ZEB1 are known to exist.
Isotype	IgG
Form	Liquid
Concentration	1 mg/mL
Purification	ZEB1 Antibody is affinity chromatography purified via peptide column.

Suggested Dilutions

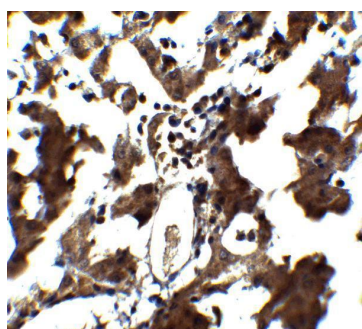
ZEB1 antibody can be used for detection of ZEB1 by Western blot at 1 ug/mL. Antibody can also be used for immunocytochemistry starting at 20 ug/mL and immunohistochemistry starting at 5 ug/mL. For immunofluorescence start at 20 ug/mL.

Antibody validated: Western Blot in human samples; Immunohistochemistry in human samples; Immunocytochemistry in human samples and Immunofluorescence in human samples. All other applications and species not yet tested. Optimal dilutions for each application should be determined by the researcher.

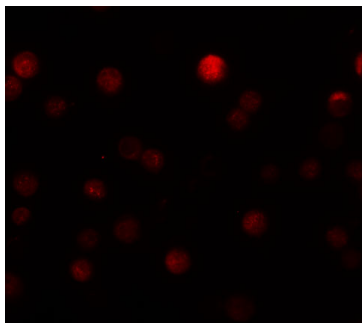
## Anti-ZEB1 Antibody (A00548) Images



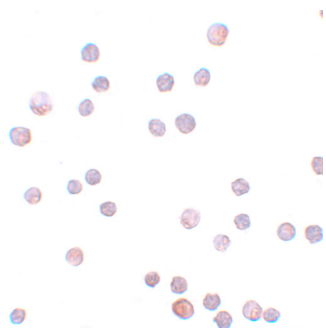
Western blot analysis of ZEB1 in HeLa cell lysate with ZEB1 antibody at 1ug/mL.



Immunohistochemistry of ZEB1 in human liver tissue with ZEB1 antibody at 5 ug/mL.

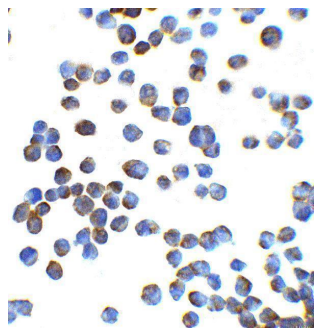


Immunofluorescence of ZEB1 in HeLa cells with ZEB1 antibody at 20 ug/mL.



Immunocytochemistry of ZEB1 in HeLa cells with ZEB1 antibody at 20 ug/mL.

Immunocytochemistry of ZEB1 in K562 cells with ZEB1 antibody at 2.5 ug/ml.



## 1 Publications Citing This Product

1. PubMed ID: 32335297, Wang Q,Shang J,Zhang Y,Zhou Y,Tang L.MiR-451a restrains the growth and metastatic phenotypes of papillary thyroid carcinoma cells via inhibiting ZEB1.Biomed Pharmacother.2020 Jul;127:109901.doi:10.1016/j.biopha.2020.109901.Epub 2020 Apr 23.PMID:32335297.

Visit [bosterbio.com/anti-zeb1-antibody-a00548-boster.html](https://bosterbio.com/anti-zeb1-antibody-a00548-boster.html) to see all 1 publications.

## Submit a product review to Biocompare.com

Submit a review of this product to Biocompare.com to receive a \$20 Amazon.com giftcard! Your reviews help your fellow scientists make the right decisions. Thank you for your contribution.



Anti-ZEB1 Antibody

For Research Use Only. Not for use in diagnostic procedures.