

Anti-AREB6/ZEB1 Antibody Picoband®

Catalog Number: A00548-2

About ZEB1

ZEB1 (Zinc Finger E Box-Binding Homeobox 1), also called TCF8, NIL2A or DELTA-EF1, is a protein that in humans is encoded by the ZEB1 gene. Fluorescence in situ hybridization localized the ZEB1 gene to chromosome 10p11.2. Krafchak et al. (2005) demonstrated a complex (core plus secondary) binding site for TCF8 in the promoter of the COL4A3 gene, mutant in Alport syndrome and which encodes collagen type IV alpha-3. They detected expression of TCF8 in cornea. Nishimura et al. (2006) found that delta-Ef1 was upregulated during differentiation in a mouse smooth muscle cell (SMC) line.

Overview

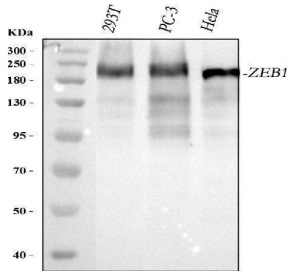
Product Name	Anti-AREB6/ZEB1 Antibody Picoband®
Reactive Species	Human
Description	Boster Bio Anti-AREB6/ZEB1 Antibody Picoband® catalog # A00548-2. Tested in Flow Cytometry, IF, IHC, ICC, WB applications. This antibody reacts with Human. The brand Picoband indicates this is a premium antibody that guarantees superior quality, high affinity, and strong signals with minimal background in Western blot applications. Only our best-performing antibodies are designated as Picoband, ensuring unmatched performance.
Application	Flow Cytometry, IF, IHC, ICC, WB
Clonality	Polyclonal
Formulation	Each vial contains 4mg Trehalose, 0.9mg NaCl, 0.2mg Na2HPO4, 0.05mg NaN3.
Storage Instructions	Store at -20°C for one year from date of receipt. After reconstitution, at 4°C for one month. It can also be aliquotted and stored frozen at -20°C for six months. Avoid repeated freeze-thaw cycles.
Host	Rabbit
Uniprot ID	P37275

Technical Details

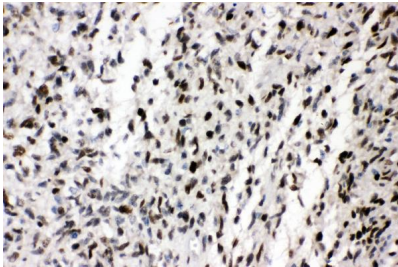
Immunogen	A synthetic peptide corresponding to a sequence in the middle region of human ZEB1, which shares 94.9% and 100% amino acid (aa) sequence identity with rat ZEB1.
Recommended Detection Systems	Boster recommends Enhanced Chemiluminescent Kit with anti-Rabbit IgG (EK1002) for Western blot, and HRP Conjugated anti-Rabbit IgG Super Vision Assay Kit (SV0002-1) for IHC(P) and ICC.
Cross Reactivity	No cross-reactivity with other proteins.
Isotype	Rabbit IgG
Form	Lyophilized

Concentration	Adding 0.2 ml of distilled water will yield a concentration of 500 ug/ml.
Purification	Immunogen affinity purified.
Suggested Dilutions	Western blot, 0.25-0.5ug/ml, Human Immunohistochemistry (Paraffin-embedded Section), 0.5-1ug/ml, Human Immunocytochemistry/Immunofluorescence, 2ug/ml, Human Flow Cytometry (Fixed), 1-3ug/1x10 ⁶ cells, Human

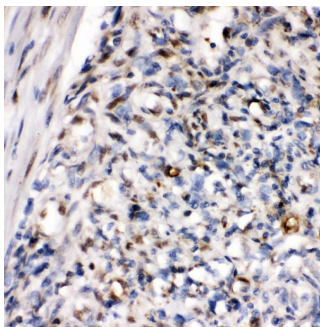
Anti-AREB6/ZEB1 Antibody Picoband® (A00548-2) Images



Western blot analysis of ZEB1 using anti-ZEB1 antibody (A00548-2). Electrophoresis was performed on a 5-20% SDS-PAGE gel at 70V (Stacking gel) / 90V (Resolving gel) for 2-3 hours. The sample well of each lane was loaded with 30 ug of sample under reducing conditions. Lane 1: human 293T whole cell lysates, Lane 2: human PC-3 whole cell lysates, Lane 3: human HeLa whole cell lysates. After electrophoresis, proteins were transferred to a nitrocellulose membrane at 150 mA for 50-90 minutes. Blocked the membrane with 5% non-fat milk/TBS for 1.5 hour at RT. The membrane was incubated with rabbit anti-ZEB1 antigen affinity purified polyclonal antibody (Catalog # A00548-2) at 0.5 ug/mL overnight at 4°C, then washed with TBS-0.1%Tween 3 times with 5 minutes each and probed with a goat anti-rabbit IgG-HRP secondary antibody at a dilution of 1:5000 for 1.5 hour at RT. The signal is developed using an Enhanced Chemiluminescent detection (ECL) kit (Catalog # EK1002) with Tanon 5200 system. A specific band was detected for ZEB1 at approximately 200 kDa. The expected band size for ZEB1 is at 124 kDa.

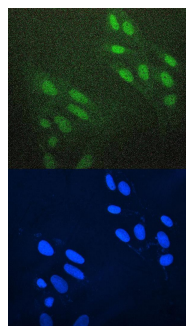


IHC analysis of ZEB1 using anti-ZEB1 antibody (A00548-2). ZEB1 was detected in paraffin-embedded section of human glioma tissues. Heat mediated antigen retrieval was performed in citrate buffer (pH6, epitope retrieval solution) for 20 mins. The tissue section was blocked with 10% goat serum. The tissue section was then incubated with 1ug/ml rabbit anti-ZEB1 Antibody (A00548-2) overnight at 4°C. Biotinylated goat anti-rabbit IgG was used as secondary antibody and incubated for 30 minutes at 37°C. The tissue section was developed using Streptavidin-Biotin-Complex (SABC)(Catalog # SA1022) with DAB as the chromogen.

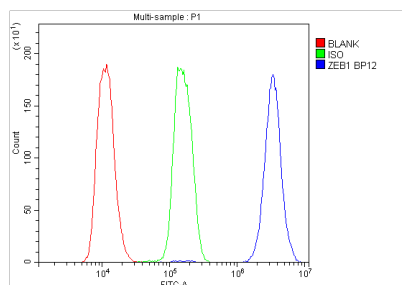


IHC analysis of ZEB1 using anti-ZEB1 antibody (A00548-2). ZEB1 was detected in paraffin-embedded section of human melanoma tissues. Heat mediated antigen retrieval was performed in citrate buffer (pH6, epitope retrieval solution) for 20 mins. The tissue section was blocked with 10% goat serum. The tissue section was then incubated with 1ug/ml rabbit anti-ZEB1 Antibody (A00548-2) overnight at 4°C. Biotinylated goat anti-rabbit IgG was used as secondary antibody and incubated for 30 minutes at 37°C. The tissue section was developed using Streptavidin-Biotin-Complex (SABC)(Catalog # SA1022) with DAB as the chromogen.

IF analysis of ZEB1 using anti-ZEB1 antibody (A00548-2) ZEB1 was detected in immunocytochemical section of U20S cell. Enzyme antigen retrieval was performed using IHC enzyme antigen retrieval reagent (AR0022) for 15 mins. The tissue section was blocked with 10% goat serum. The tissue section was then incubated with 2ug/mL rabbit anti-ZEB1 Antibody (A00548-2) overnight at 4°C. DyLight488



Conjugated Goat Anti-Rabbit IgG (BA1127) was used as secondary antibody at 1:100 dilution and incubated for 30 minutes at 37°C. The section was counterstained with DAPI. Visualize using a fluorescence microscope and filter sets appropriate for the label used.



Flow Cytometry analysis of K562 cells using anti-ZEB1 antibody (A00548-2). Overlay histogram showing K562 cells stained with A00548-2 (Blue line). To facilitate intracellular staining, cells were fixed with 4% paraformaldehyde and permeabilized with permeabilization buffer. The cells were blocked with 10% normal goat serum. And then incubated with rabbit anti-ZEB1 Antibody (A00548-2, 1 μ g/1x10⁶ cells) for 30 min at 20°C. DyLight®488 conjugated goat anti-rabbit IgG (BA1127, 5-10 μ g/1x10⁶ cells) was used as secondary antibody for 30 minutes at 20°C. Isotype control antibody (Green line) was rabbit IgG (1 μ g/1x10⁶) used under the same conditions. Unlabelled sample (Red line) was also used as a control.

3 Publications Citing This Product

1. PubMed ID: 10.1016/j.bbrc.2017.12.096, MiR-181a contributes gefitinib resistance in non-small cell lung cancer cells by targeting GAS7
2. PubMed ID: 10.1016/j.gendis.2019.12.012, All-trans retinoic acid reverses malignant biological behavior of hepatocarcinoma cells by regulating miR-200 family members
3. PubMed ID: 32335297, Wang Q, Shang J, Zhang Y, Zhou Y, Tang L. MiR-451a restrains the growth and metastatic phenotypes of papillary thyroid carcinoma cells via inhibiting ZEB1. Biomed Pharmacother. 2020 Jul;127:109901. doi:10.1016/j.biopha.2020.109901. Epub 2020 Apr 23. PMID:32335297.

Visit bosterbio.com/anti-areb6-zeb1-picoband-trade-antibody-a00548-2-boster.html to see all 3 publications.

Submit a product review to Biocompare.com

Submit a review of this product to Biocompare.com to receive a \$20 Amazon.com giftcard! Your reviews help your fellow scientists make the right decisions. Thank you for your contribution.



Anti-AREB6/ZEB1 Antibody

For Research Use Only. Not for use in diagnostic procedures.