

Anti-GTBP MSH6 Antibody

Catalog Number: A00553

About MSH6

Binds and is activated by neuregulins and NTAK.

Overview

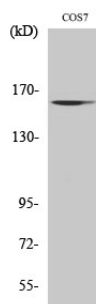
Product Name	Anti-GTBP MSH6 Antibody
Reactive Species	Human, Monkey, Mouse
Description	Boster Bio Anti-GTBP MSH6 Antibody catalog # A00553. Tested in WB applications. This antibody reacts with Human, Monkey, Mouse.
Application	WB
Clonality	Polyclonal 8H7
Formulation	Liquid in PBS containing 50% glycerol, 0.5% BSA and 0.02% sodium azide.
Storage Instructions	Store at -20°C for one year. For short term storage and frequent use, store at 4°C for up to one month. Avoid repeated freeze-thaw cycles.
Host	Rabbit
Uniprot ID	P52701

Technical Details

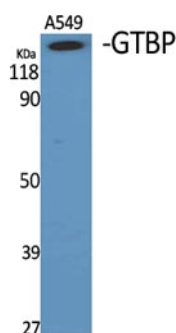
Immunogen	Synthesized peptide derived from the Internal region of human GTBP. at AA range: 310-390
Predicted Reactive Species	Bovine, Canine, Guinea Pig, Pig, Rabbit
Cross Reactivity	No cross reactivity with other proteins.
Isotype	IgG
Form	Liquid
Concentration	This antibody's concentration is >0.5mg/ml.
Purification	Immunogen affinity purified
Suggested Dilutions	Dilute the sample so that the expected range of concentrations fall within the detection range of this kit. If the expected range of concentration is unknown, a pilot test should be conducted to decide the optimal dilution ratio for your samples. Some PubMed article(s) citing the expression level of this target are as follows: Boster Bio's internal QC testing used:

	WB, 1:500-1:2000
--	------------------

Anti-GTBP MSH6 Antibody (A00553) Images



Western Blot (WB) analysis of COS7 cells using GTBP Polyclonal antibody.



Western Blot (WB) analysis of specific cells using GTBP Polyclonal antibody.

Submit a product review to Biocompare.com

Submit a review of this product to Biocompare.com to receive a \$20 Amazon.com giftcard! Your reviews help your fellow scientists make the right decisions. Thank you for your contribution.



Anti-GTBP MSH6 Antibody