

Anti-CD156c ADAM10 Antibody

Catalog Number: A00566

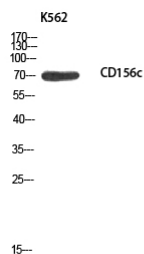
Overview

Product Name	Anti-CD156c ADAM10 Antibody
Reactive Species	Human, Mouse, Rat
Description	Boster Bio Anti-CD156c ADAM10 Antibody catalog # A00566. Tested in WB, IHC, IF, ELISA applications. This antibody reacts with Human, Mouse, Rat.
Application	ELISA, IF, IHC, WB
Clonality	Polyclonal
Formulation	Liquid in PBS containing 50% glycerol, 0.5% stabilizing protein and 0.02% sodium azide. *This antibody is supplied in a stabilized formulation. Compatibility with conjugation reactions depends on the chemistry of the conjugation method used. For conjugation methods that are not compatible with the stabilizing components present in this formulation, a carrier-free antibody format is required.
Storage Instructions	Store at -20°C for one year. For short term storage and frequent use, store at 4°C for up to one month. Avoid repeated freeze-thaw cycles.
Host	Rabbit
Uniprot ID	O14672

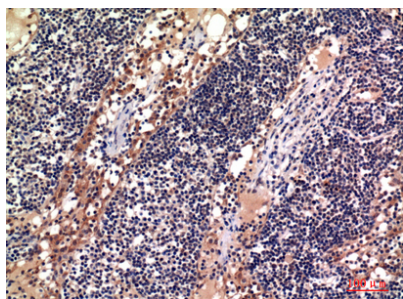
Technical Details

Immunogen	Synthesized peptide derived from the Internal region of human CD156c.
Cross Reactivity	No cross reactivity with other proteins.
Isotype	IgG
Form	Liquid
Concentration	1 mg/ml
Purification	Immunogen affinity purified
Suggested Dilutions	WB 1:500-1:2000 IHC: 1:100-1:300 ELISA 1:10000 IF 1:50-200

Anti-CD156c ADAM10 Antibody (A00566) Images



Western blot analysis of K562 using CD156c antibody.
Secondary antibody was diluted at 1:20000



Immunohistochemical analysis of paraffin-embedded human lymph, antibody was diluted at 1:100

Submit a product review to Biocompare.com

Submit a review of this product to Biocompare.com to receive a \$20 Amazon.com giftcard! Your reviews help your fellow scientists make the right decisions. Thank you for your contribution.



Anti-CD156c ADAM10 Antibody

For Research Use Only. Not for use in diagnostic procedures.