

Anti-ADAM10 Antibody

Catalog Number: A00566-4

About ADAM10

Transcriptional regulator that binds to DNA as a dimer or as a tetramer, but not as a monomer. Binds to G-doublets in an A/T-rich environment; the preferred motif is a tandem repeat of 5'-ATTGGTTA-3' combined with a 5'-TTATTA-3' box. Binds to nucleosomes By similarity. Binds to chromatin and interacts selectively with histone H3 that is not methylated at 'Lys-4', not phosphorylated at 'Thr-3' and not methylated at 'Arg-2'. Functions as a sensor of histone H3 modifications that are important for the epigenetic regulation of gene expression. Functions as a transcriptional activator and promotes the expression of otherwise tissue-specific self-antigens in the thymus, which is important for self tolerance and the avoidance of autoimmune reactions.

Nagamine K., Nat. Genet. 17:393-398(1997).

Aaltonen J., Nat. Genet. 17:399-403(1997).

Hattori M., Nature 405:311-319(2000).

Overview

Product Name	Anti-ADAM10 Antibody
Reactive Species	Human, Mouse
Description	Boster Bio Anti-ADAM10 Antibody catalog # A00566-4. Tested in WB,IHC applications. This antibody reacts with Human,Mouse.
Application	IHC, WB
Clonality	Polyclonal
Formulation	Rabbit IgG, 1mg/ml in PBS with 0.02% sodium azide, 50% glycerol, pH7.2
Storage Instructions	Store at -20°C for one year. For short term storage and frequent use, store at 4°C for up to one month. Avoid repeated freeze-thaw cycles.
Host	Rabbit
Uniprot ID	O14672

Technical Details

Immunogen	Synthesized peptide derived from human TRPV4.
Predicted Reactive Species	Canine, Monkey
Isotype	IgG
Form	Liquid

Concentration	1 mg/ml
Purification	The antibody was affinity-purified from rabbit antiserum by affinity-chromatography using epitope-specific immunogen and the purity is > 95% (by SDS-PAGE).
Suggested Dilutions	<p>Dilute the sample so that the expected range of concentrations fall within the detection range of this kit.</p> <p>If the expected range of concentration is unknown, a pilot test should be conducted to decide the optimal dilution ratio for your samples.</p> <p>Some PubMed article(s) citing the expression level of this target are as follows:</p> <p>Boster Bio's internal QC testing used:</p> <p>WB: 1:500-1:1000</p> <p>IHC: 1:50-1:200</p>

Anti-ADAM10 Antibody (A00566-4) Images

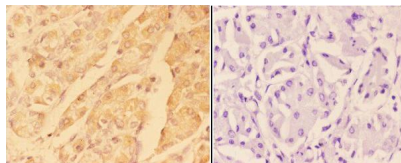


Figure 2. Immunohistochemistry validation of ADAM10 using Anti-ADAM10 Antibody (A00566-4).

Immunohistochemistry (IHC) analyzes of ADAM10 pAb in paraffin-embedded human stomach carcinoma tissue at 1:50

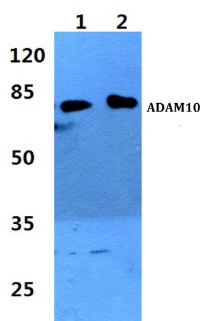


Figure 1. Western blotting validation for Anti-ADAM10 Antibody A00566-4

Western blot (WB) analysis of ADAM10 polyclonal antibody at 1:500 dilution

Lane1:Hela cell lysate

Lane2:sp2/0 cell lysate

Electrophoresis was performed on a SDS-PAGE gel. To determine SDS-PAGE gel concentration

Submit a product review to Biocompare.com

Submit a review of this product to Biocompare.com to receive a \$20 Amazon.com giftcard! Your reviews help your fellow scientists make the right decisions. Thank you for your contribution.



Anti-ADAM10 Antibody