

Anti-EFS Antibody Picoband®

Catalog Number: A00572

About EFS

The protein encoded by this gene is a member of the CAS (CRK-associated substrate) family of adaptor proteins which typically serve as scaffolds for the assembly of larger signaling complexes. These complexes form at the cell surface where integrin binding leads to the subsequent phosphorylation of a CAS protein. Additional binding of SRC family kinases leads to CAS hyperphosphorylation and the creation of binding sites for CRK and other proteins that cause actin cytoskeleton reorganization. This gene plays a role in integrin-mediated cell attachment, spreading, and migration and also plays a role in both normal and malignant cellular transformation. This broadly expressed gene has been shown to play a role in neurite outgrowth and its expression in the thymus and lymphocytes is important for T cell maturation and the development of immunological self-tolerance. Alternative splicing of this gene results in multiple transcript variants encoding distinct isoforms.

Overview

Product Name	Anti-EFS Antibody Picoband®
Reactive Species	Human, Mouse, Rat
Description	Boster Bio Anti-EFS Antibody Picoband® catalog # A00572. Tested in WB, IP, Flow Cytometry, ELISA applications. This antibody reacts with Human, Mouse, Rat. The brand Picoband indicates this is a premium antibody that guarantees superior quality, high affinity, and strong signals with minimal background in Western blot applications. Only our best-performing antibodies are designated as Picoband, ensuring unmatched performance.
Application	ELISA, Flow Cytometry, IP, WB
Clonality	Polyclonal
Formulation	Each vial contains 4 mg Trehalose, 0.9 mg NaCl, 0.2 mg Na ₂ HPO ₄ .
Storage Instructions	At -20°C for one year from date of receipt. After reconstitution, at 4°C for one month. It can also be aliquotted and stored frozen at -20°C for six months. Avoid repeated freezing and thawing.
Host	Rabbit
Uniprot ID	O43281

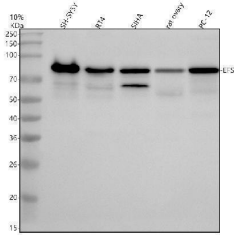
Technical Details

Immunogen	E.coli-derived human EFS recombinant protein (Position: E183-T553). Human EFS shares 82.2% amino acid (aa) sequence identity with mouse EFS.
Form	Lyophilized
Concentration	Adding 0.2 ml of distilled water will yield a concentration of 500 ug/ml.
Purification	Immunogen affinity purified.

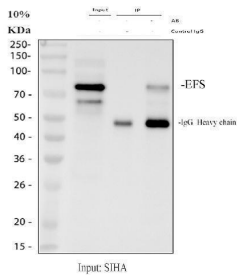
Suggested Dilutions

Western blot, 0.25-0.5 ug/ml, Human, Mouse, Rat
Immunoprecipitation, 0.5-2 ug/ml, Human
Flow Cytometry (Fixed), 1-3 ug/1x10⁶ cells, Human
ELISA, 0.1-0.5 ug/ml

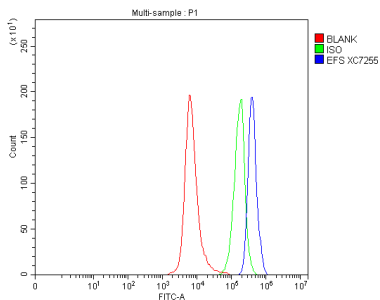
Anti-EFS Antibody Picoband® (A00572) Images



Western blot analysis of EFS using anti-EFS antibody (A00572). Electrophoresis was performed on a 10% SDS-PAGE gel at 80V (Stacking gel) / 120V (Resolving gel) for 2 hours. The sample well of each lane was loaded with 30 ug of sample under reducing conditions. Lane 1: human SH-SY5Y whole cell lysates, Lane 2: human RT4 whole cell lysates, Lane 3: human SIHA whole cell lysates, Lane 4: rat ovary tissue lysates, Lane 5: rat PC-12 whole cell lysates. After electrophoresis, proteins were transferred to a nitrocellulose membrane at 150 mA for 50-90 minutes. Blocked the membrane with 5% non-fat milk/TBS for 1.5 hour at RT. The membrane was incubated with rabbit anti-EFS antigen affinity purified polyclonal antibody (A00572) at 0.5 ug/mL overnight at 4°C, then washed with TBS-0.1%Tween 3 times with 5 minutes each and probed with a goat anti-rabbit IgG-HRP secondary antibody at a dilution of 1:5000 for 1.5 hour at RT. The signal is developed using an ECL Plus Western Blotting Substrate (Catalog # AR1196-200) with Tanon 5200 system. A specific band was detected for EFS at approximately 85 kDa. The expected band size for EFS is at 59 kDa.



Immunoprecipitating (IP) EFS in SiHa whole cell lysate. Western blot analysis of EFS using anti-EFS antibody (A00572); Lane 1: SiHa whole cell lysates (30ug); Lane 2: Rabbit control IgG instead of anti-EFS antibody in SiHa whole cell lysate; Lane 3: anti-EFS antibody (2ug) + SiHa whole cell lysate (500ug). After electrophoresis, proteins were transferred to a membrane. Then the membrane was incubated with rabbit anti-EFS antigen affinity purified polyclonal antibody (A00572) at a dilution of 0.5 ug/mL and probed with a goat anti-rabbit IgG-HRP secondary antibody (Catalog # BA1054). The signal is developed using ECL Plus Western Blotting Substrate (Catalog # AR1196-200). A specific band was detected for EFS at approximately 85 kDa. The expected band size for EFS is at 59 kDa.



Flow Cytometry analysis of SH-SY5Y cells using anti-EFS antibody (A00572). Overlay histogram showing SH-SY5Y cells stained with A00572 (Blue line). To facilitate intracellular staining, cells were fixed with 4% paraformaldehyde and permeabilized with permeabilization buffer. The cells were blocked with 10% normal goat serum. And then incubated with rabbit anti-EFS Antibody (A00572, 1 ug/1x10⁶ cells) for 30 min at 20°C. DyLight®488 conjugated goat anti-rabbit IgG (BA1127, 5-10 ug/1x10⁶ cells) was used as secondary antibody for 30 minutes at 20°C. Isotype control antibody (Green line) was rabbit IgG (1 ug/1x10⁶) used under the same conditions. Unlabelled sample without incubation with primary antibody and secondary antibody (Red line) was used as a blank control.

Submit a product review to Biocompare.com

Submit a review of this product to Biocompare.com to receive a \$20 Amazon.com giftcard! Your reviews help your fellow scientists make the right decisions. Thank you for your contribution.



Anti-EFS Antibody

For Research Use Only. Not for use in diagnostic procedures.