

Anti-Phospho-CREB(S133) Antibody

Catalog Number: A00577

About CREB1

CREB is a transcription factor that is a member of the leucine zipper family of DNA binding proteins. This protein binds as a homodimer to the cAMP-responsive element, (CRE), a sequence present in many viral and cellular promoters. The protein is phosphorylated by several protein kinases, and induces transcription of genes in response to hormonal stimulation of the cAMP pathway.

Overview

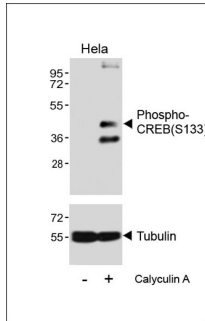
Product Name	Anti-Phospho-CREB(S133) Antibody
Reactive Species	Human
Description	Boster Bio Anti-Phospho-CREB(S133) Antibody (Catalog # A00577). Tested in IHC-P-Leica, IF, WB application(s). This antibody reacts with Human.
Application	IF, WB, IHC-P-Leica
Clonality	Polyclonal
Formulation	Purified polyclonal antibody supplied in PBS with 0.09% (W/V) sodium azide.
Storage Instructions	Maintain refrigerated at 2-8°C for up to 2 weeks. For long-term storage, store at -20°C in small aliquots to prevent freeze-thaw cycles.
Host	Rabbit
Uniprot ID	P16220

Technical Details

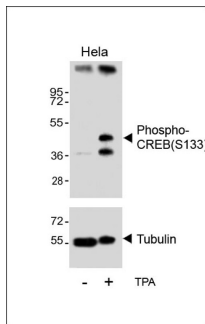
Immunogen	This CREB Antibody is generated from rabbits immunized with a KLH conjugated synthetic phosphopeptide corresponding to amino acid residues surrounding S133 of human CREB.
Predicted Reactive Species	C. elegans
Recommended Detection Systems	Boster recommends Enhanced Chemiluminescent Kit with anti-Rabbit IgG (EK1002) for Western blot, and HRP Conjugated anti-Rabbit IgG Super Vision Assay Kit (SV0002-1) for IHC(P).
Cross Reactivity	No cross reactivity with other proteins.
Isotype	Rabbit IgG
Form	Liquid
Purification	This antibody is purified through a protein A column, followed by peptide affinity purification.
Suggested Dilutions	WB: 1:500

IHC-P-Leica: 1:500

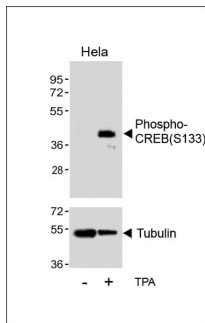
Anti-Phospho-CREB(S133) Antibody (A00577) Images



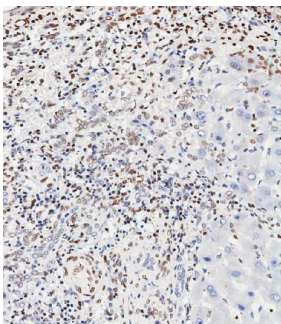
Western blot analysis of lysates from HeLa cell line, untreated or treated with 20% FBS + 100nM Calyculin A, using Phospho-CREB (S133) Antibody (upper) or tubulin (lower).



Western blot analysis of lysates from HeLa cell line, untreated or treated with TPA, 200nM, using Phospho-CREB (S133) Antibody (upper) or tubulin (lower).

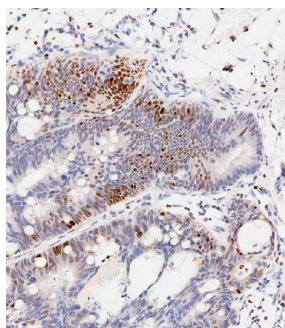


Western blot analysis of lysates from HeLa cell line, untreated or treated with TPA, 200nM, using Phospho-CREB (S133) Antibody (upper) or tubulin (lower).



Immunohistochemical analysis of paraffin-embedded Human hepatocarcinoma tissue using A00577 performed on the Leica® BOND RXm. Tissue was fixed with formaldehyde at room temperature, antigen retrieval was by heat mediation with a EDTA buffer (pH9.0). Samples were incubated with primary antibody (1:500) for 1 hours at room temperature. A undiluted biotinylated CRF Anti-Polyvalent HRP Polymer antibody was used as the secondary antibody.

Immunohistochemical analysis of paraffin-embedded Human colon carcinoma tissue using A00577 performed on the Leica® BOND RXm. Tissue was fixed with formaldehyde at room temperature, antigen retrieval was by heat mediation with a EDTA buffer (pH9.0). Samples were incubated with primary antibody (1:500) for 1 hours at room temperature. A undiluted biotinylated CRF Anti-Polyvalent HRP Polymer



antibody was used as the secondary antibody.

Submit a product review to [Biocompare.com](https://www.biocompare.com)

Submit a review of this product to [Biocompare.com](https://www.biocompare.com) to receive a \$20 Amazon.com giftcard! Your reviews help your fellow scientists make the right decisions. Thank you for your contribution.



Anti-Phospho-CREB(S133) Antibody

For Research Use Only. Not for use in diagnostic procedures.