

## Anti-CREB (Phospho-S133) CREB1 Antibody

Catalog Number: A00577S133-1

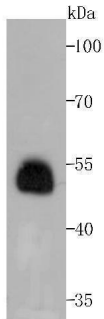
### Overview

Product Name	Anti-CREB (Phospho-S133) CREB1 Antibody
Reactive Species	Human, Mouse
Description	Boster Bio Anti-CREB (Phospho-S133) CREB1 Antibody catalog # A00577S133-1. Tested in WB,ICC,IF,IHC,IP,Flow Cytometry applications. This antibody reacts with Human,Mouse.
Application	Flow Cytometry, IP, IF, IHC, ICC, WB
Clonality	Polyclonal
Formulation	Rabbit IgG, 1mg/ml in PBS with 0.02% sodium azide, 50% glycerol, pH7.2
Storage Instructions	Store at -20°C for one year. For short term storage and frequent use, store at 4°C for up to one month. Avoid repeated freeze-thaw cycles.
Host	Rabbit
Uniprot ID	P16220

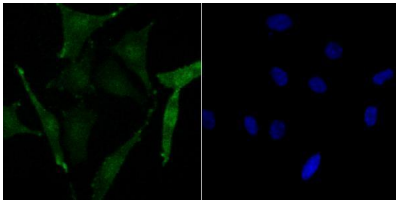
### Technical Details

Immunogen	Synthetic phospho-peptide corresponding to residues surrounding Ser133 of human Creb.
Isotype	IgG
Form	Liquid
Concentration	1 mg/ml
Purification	ProA affinity purified
Suggested Dilutions	WB: 1:500-1:2,000 ICC: 1:50-1:100 IHC: 1:50-1:200 FC: 1:50-1:100 IP: 1:10-1:50

## Anti-CREB (Phospho-S133) CREB1 Antibody (A00577S133-1) Images



Western blot analysis of Phospho-Creb (S133) on human colon tissue lysates using anti-Phospho-Creb (S133) antibody at 1/500 dilution.



ICC staining Phospho-Creb (S133) in SH-SY-5Y cells (green). The nuclear counter stain is DAPI (blue). Cells were fixed in paraformaldehyde, permeabilised with 0.25% Triton X100/PBS.

### Submit a product review to [Biocompare.com](https://www.biocompare.com)

Submit a review of this product to [Biocompare.com](https://www.biocompare.com) to receive a \$20 Amazon.com giftcard! Your reviews help your fellow scientists make the right decisions. Thank you for your contribution.



Anti-CREB (Phospho-S133) CREB1 Antibody

For Research Use Only. Not for use in diagnostic procedures.