

Anti-Phospho-EphA2 (Y588) Antibody

Catalog Number: A00578Y588-1

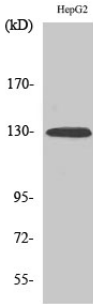
Overview

Product Name	Anti-Phospho-EphA2 (Y588) Antibody
Reactive Species	Human, Mouse
Description	Boster Bio Anti-Phospho-EphA2 (Y588) Antibody catalog # A00578Y588-1. Tested in WB, ELISA applications. This antibody reacts with Human, Mouse.
Application	ELISA, WB
Clonality	Polyclonal
Formulation	Liquid in PBS containing 50% glycerol, 0.5% stabilizing protein and 0.02% sodium azide. *This antibody is supplied in a stabilized formulation. Compatibility with conjugation reactions depends on the chemistry of the conjugation method used. For conjugation methods that are not compatible with the stabilizing components present in this formulation, a carrier-free antibody format is required.
Storage Instructions	Store at -20°C for one year. For short term storage and frequent use, store at 4°C for up to one month. Avoid repeated freeze-thaw cycles.
Host	Rabbit
Uniprot ID	P29317

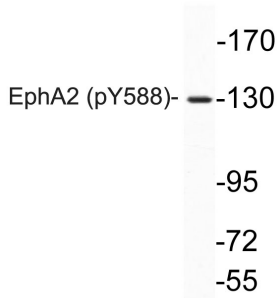
Technical Details

Immunogen	Synthesized phospho-peptide around the phosphorylation site of human EphA2 (phospho Tyr588)
Isotype	IgG
Form	Liquid
Concentration	1 mg/ml
Purification	The antibody was affinity-purified from rabbit antiserum by affinity-chromatography using epitope-specific immunogen.
Suggested Dilutions	WB 1:500-1:2000 ELISA 1:10000

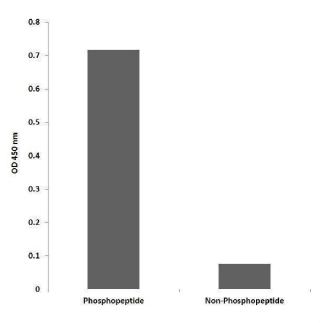
Anti-Phospho-EphA2 (Y588) Antibody (A00578Y588-1) Images



Western Blot analysis of various cells using Phospho-EphA2 (Y588) Polyclonal Antibody



Western blot analysis of lysates from HepG2 cell, using phospho-EphA2 (Phospho-Tyr588) antibody.



Enzyme-Linked Immunosorbent Assay (Phospho-ELISA) for Immunogen Phosphopeptide (Phospho-left) and Non-Phosphopeptide (Phospho-right), using EphA2 (Phospho-Tyr588) Antibody

Submit a product review to [Biocompare.com](https://www.biocompare.com)

Submit a review of this product to [Biocompare.com](https://www.biocompare.com) to receive a \$20 Amazon.com giftcard! Your reviews help your fellow scientists make the right decisions. Thank you for your contribution.



Anti-Phospho-EphA2 (Y588) Antibody

For Research Use Only. Not for use in diagnostic procedures.