

Anti-Phospho-EphA2/3/4 (Y588/596) Antibody

Catalog Number: A00578Y588-2

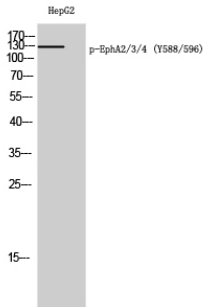
Overview

| | |
|----------------------|--|
| Product Name | Anti-Phospho-EphA2/3/4 (Y588/596) Antibody |
| Reactive Species | Human, Mouse, Rat |
| Description | Boster Bio Anti-Phospho-EphA2/3/4 (Y588/596) Antibody catalog # A00578Y588-2. Tested in WB, IF, ELISA applications. This antibody reacts with Human, Mouse, Rat. |
| Application | ELISA, IF, WB |
| Clonality | Polyclonal |
| Formulation | Liquid in PBS containing 50% glycerol, 0.5% stabilizing protein and 0.02% sodium azide. *This antibody is supplied in a stabilized formulation. Compatibility with conjugation reactions depends on the chemistry of the conjugation method used. For conjugation methods that are not compatible with the stabilizing components present in this formulation, a carrier-free antibody format is required. |
| Storage Instructions | Store at -20°C for one year. For short term storage and frequent use, store at 4°C for up to one month. Avoid repeated freeze-thaw cycles. |
| Host | Rabbit |
| Uniprot ID | P29317 |

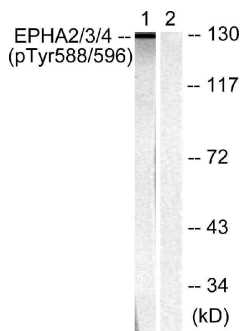
Technical Details

| | |
|---------------------|---|
| Immunogen | The antiserum was produced against synthesized peptide derived from human EPHA2/3 around the phosphorylation site of Tyr588/596. AA range:556-605 |
| Isotype | IgG |
| Form | Liquid |
| Concentration | 1 mg/ml |
| Purification | The antibody was affinity-purified from rabbit antiserum by affinity-chromatography using epitope-specific immunogen. |
| Suggested Dilutions | WB 1:500-1:2000 IF 1:200-1:1000 ELISA 1:20000 |

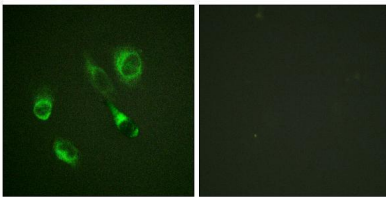
Anti-Phospho-EphA2/3/4 (Y588/596) Antibody (A00578Y588-2) Images



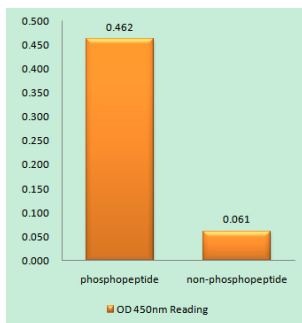
Western Blot analysis of HepG2 cells using Phospho-EphA2/3/4 (Y588/596) Polyclonal Antibody



Western blot analysis of lysates from HepG2 cells, using EPHA2/3 (Phospho-Tyr588/596) Antibody. The lane on the right is blocked with the phospho peptide.



Immunofluorescence analysis of HeLa cells, using EPHA2/3 (Phospho-Tyr588/596) Antibody. The picture on the right is blocked with the phospho peptide.



Enzyme-Linked Immunosorbent Assay (Phospho-ELISA) for Immunogen Phosphopeptide (Phospho-left) and Non-Phosphopeptide (Phospho-right), using EPHA2/3 (Phospho-Tyr588/596) Antibody

Submit a product review to Biocompare.com

Submit a review of this product to Biocompare.com to receive a \$20 Amazon.com giftcard! Your reviews help your fellow scientists make the right decisions. Thank you for your contribution.



Anti-Phospho-EphA2/3/4 (Y588/596) Antibody

For Research Use Only. Not for use in diagnostic procedures.