

Anti-Polycomb protein SUZ12 SUZ12 Antibody

Catalog Number: A00583

About SUZ12

The Polycomb group (PcG) genes contribute to the maintenance of cell identity, cell cycle regulation and oncogenesis (1). SUZ12 (suppressor of zeste 12) is a 90 - 95 kDa member of the polycomb group of transcriptional regulators (2). It is part of a transcription repression complex termed PRC2 (Polycomb repressive complex 2) that methylates histones in the nucleus, resulting in homeotic (pattern-inducing) gene silencing. It contains one C2H2-type zinc finger region and a C-terminal VEFS-box (3,4). SUZ12 is overexpressed in breast and colon cancer. SUZ12 may be a cause of endometrial stromal tumors (5).

Overview

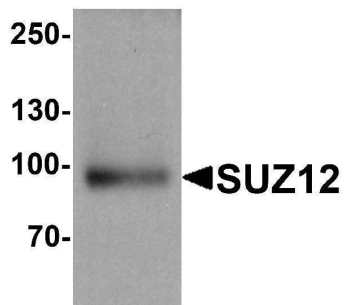
Product Name	Anti-Polycomb protein SUZ12 SUZ12 Antibody
Reactive Species	Human
Description	Boster Bio Anti-Polycomb protein SUZ12 SUZ12 Antibody (Catalog # A00583). Tested in ELISA, WB, IHC-P, IF applications. This antibody reacts with Human.
Application	ELISA, IF, IHC-P, WB
Clonality	Polyclonal
Formulation	SUZ12 antibody is supplied in PBS containing 0.02% sodium azide.
Storage Instructions	SUZ12 antibody can be stored at 4°C for three months and -20°C, stable for up to one year.
Host	Rabbit
Uniprot ID	Q15022

Technical Details

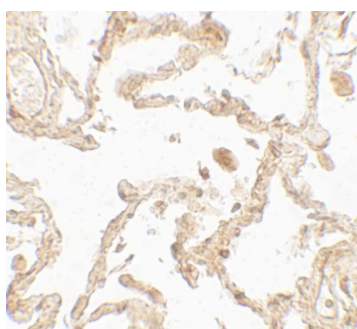
Immunogen	SUZ12 antibody was raised against a 19 amino acid peptide near the center of human SUZ12. The immunogen is located within amino acids 400 - 450 of SUZ12.
Predicted Reactive Species	Mouse
Cross Reactivity	SUZ12 antibody is human specific.
Isotype	IgG
Form	Liquid
Concentration	1 mg/mL
Purification	SUZ12 antibody is affinity chromatography purified via peptide column.
Suggested Dilutions	SUZ12 antibody can be used for detection of SUZ12 by Western blot at 1 - 2 ug/ml. Antibody can

also be used for Immunohistochemistry starting at 5 ug/mL. For immunofluorescence start at 20 ug/mL.
Antibody validated: Western Blot in human samples; Immunohistochemistry in human samples and Immunofluorescence in human samples. All other applications and species not yet tested. Optimal dilutions for each application should be determined by the researcher.

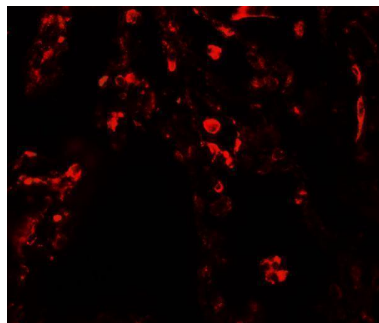
Anti-Polycomb protein SUZ12 SUZ12 Antibody (A00583) Images



Western blot analysis of SUZ12 in human liver tissue lysate with SUZ12 antibody at 1 ug/ml.



Immunohistochemistry of SUZ12 in human lung tissue with SUZ12 antibody at 5 ug/mL.



Immunofluorescence of SUZ12 in human lung tissue with SUZ12 antibody at 20 ug/mL.

Submit a product review to [Biocompare.com](https://www.biocompare.com)

Submit a review of this product to [Biocompare.com](https://www.biocompare.com) to receive a \$20 Amazon.com giftcard! Your reviews help your fellow scientists make the right decisions. Thank you for your contribution.



Anti-Polycomb protein SUZ12 SUZ12 Antibody

For Research Use Only. Not for use in diagnostic procedures.