

Anti-Clusterin Antibody

Catalog Number: A00590

About CLU

Clusterin, also known as Apolipoprotein J (ApoJ), is a ubiquitous multifunctional glycoprotein that can interact with a broad spectrum of molecules such as complement components, various receptors, and the Alzheimer's b-amyloid peptide. Clusterin expression is increased in Alzheimer's disease brain tissue and clusterin-immunoreactive amyloid plaques are found associated with phospho-tau-positive dystrophic neurites and it has been suggested that clusterin facilitates the conversion of diffuse b-amyloid deposits into amyloid and enhances tau phosphorylation in neurites around these plaques. Other reports show that clusterin expression is decreased in proliferating cells and is upregulated in quiescent and senescent cells, suggesting that it may also play a role in aging and tumorigenesis suppression. Clusterin exists in at least two distinct isoforms.

Overview

| | |
|----------------------|--|
| Product Name | Anti-Clusterin Antibody |
| Reactive Species | Human, Mouse |
| Description | Boster Bio Anti-Clusterin Antibody (Catalog # A00590). Tested in ELISA, WB, IHC-P, IF applications. This antibody reacts with Human, Mouse. |
| Application | ELISA, IF, IHC-P, WB |
| Clonality | Polyclonal |
| Formulation | Clusterin Antibody is supplied in PBS containing 0.02% sodium azide. |
| Storage Instructions | Clusterin antibody can be stored at 4°C for three months and -20°C, stable for up to one year. Avoid repeated freeze-thaw cycles. Antibodies should not be exposed to prolonged high temperatures. |
| Host | Rabbit |
| Uniprot ID | P10909 |

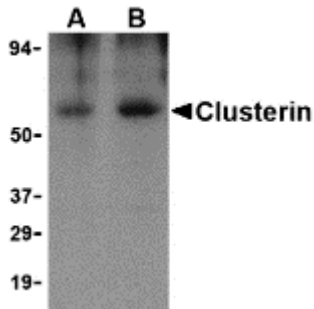
Technical Details

| | |
|----------------------------|---|
| Immunogen | Clusterin antibody was raised recombinant human Clusterin isoform 1. |
| Predicted Reactive Species | Mouse |
| Isotype | IgG |
| Form | Liquid |
| Concentration | 1 mg/mL |
| Purification | Clusterin Antibody is affinity chromatography purified via peptide column. |
| Suggested Dilutions | Clusterin antibody can be used for the detection of Clusterin by Western blot at 0.5 - 1 ug/mL. |

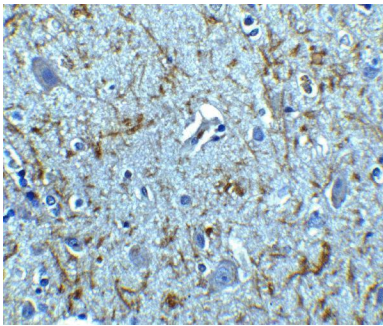
Antibody can also be used for immunohistochemistry starting at 5 ug/mL. For immunofluorescence start at 20 ug/mL.

Antibody validated: Western Blot in human samples; Immunohistochemistry in human and mouse samples and Immunofluorescence in human and mouse samples. All other applications and species not yet tested. Optimal dilutions for each application should be determined by the researcher.

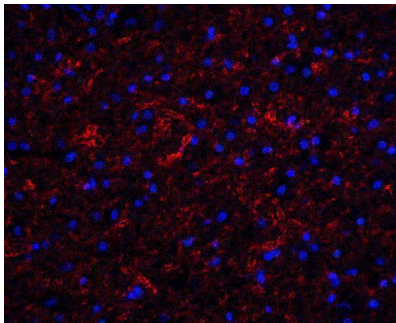
Anti-Clusterin Antibody (A00590) Images



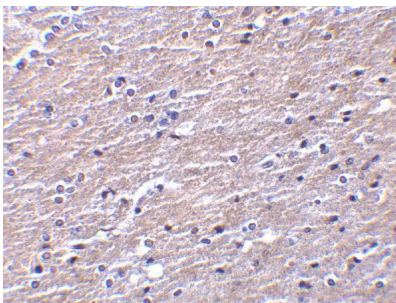
Western blot analysis of Clusterin in human brain tissue lysate with Clusterin body at (A) 0.5 and (B) 1 ug/mL.



Immunohistochemistry of Clusterin in human brain tissue with Clusterin antibody at 5 ug/mL.

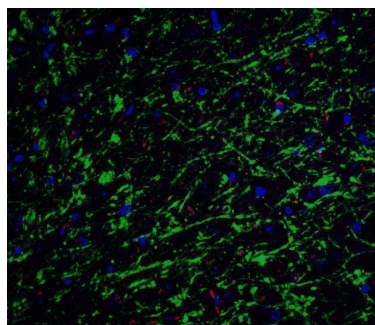
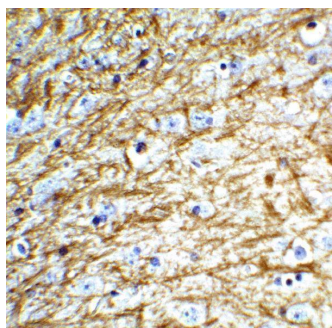


Immunofluorescence of Clusterin in human brain tissue with Clusterin antibody at 20 ug/ml. Red: Clusterin Antibody (A00590) Blue: DAPI staining



Immunohistochemistry of Clusterin in human brain tissue with Clusterin antibody at 10 ug/mL.

Immunohistochemistry of Clusterin in mouse brain tissue with Clusterin Antibody at 5 ug/mL.



Immunofluorescence of Clusterin in mouse brain tissue with Clusterin Antibody at 20 ug/mL. Green: Clusterin Antibody (A00590) Red: Phalloidin staining Blue: DAPI staining

Submit a product review to [Biocompare.com](https://www.biocompare.com)

Submit a review of this product to [Biocompare.com](https://www.biocompare.com) to receive a \$20 Amazon.com giftcard! Your reviews help your fellow scientists make the right decisions. Thank you for your contribution.



Anti-Clusterin Antibody

For Research Use Only. Not for use in diagnostic procedures.