

Anti-CLU Antibody (N-term)

Catalog Number: A00590-2

About CLU

The protein encoded by this gene appears to be involved in several basic biological events such as cell death, tumor progression, and neurodegenerative disorders. However, the function of this protein is unknown. Three transcript variants encoding different isoforms have been found for this gene, and one of them is secreted and processed into a mature form.

Overview

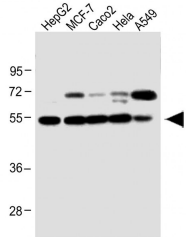
Product Name	Anti-CLU Antibody (N-term)
Reactive Species	Human, Mouse, Rat
Description	Boster Bio Anti-CLU Antibody (N-term) (Catalog # A00590-2). Tested in WB, Flow Cytometry, IHC-P-Leica application(s). This antibody reacts with Human, Mouse, Rat.
Application	Flow Cytometry, WB, IHC-P-Leica
Clonality	Polyclonal
Formulation	Purified polyclonal antibody supplied in PBS with 0.09% (W/V) sodium azide.
Storage Instructions	Maintain refrigerated at 2-8°C for up to 2 weeks. For long-term storage, store at -20°C in small aliquots to prevent freeze-thaw cycles.
Host	Rabbit
Uniprot ID	P10909

Technical Details

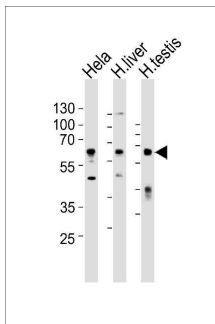
Immunogen	This CLU antibody is generated from rabbits immunized with a KLH conjugated synthetic peptide between 71-99 amino acids from the N-terminal region of human CLU.
Predicted Reactive Species	<i>C. elegans</i>
Recommended Detection Systems	Boster recommends Enhanced Chemiluminescent Kit with anti-Rabbit IgG (EK1002) for Western blot, and HRP Conjugated anti-Rabbit IgG Super Vision Assay Kit (SV0002-1) for IHC(P).
Cross Reactivity	No cross reactivity with other proteins.
Isotype	Rabbit IgG
Form	Liquid
Purification	This antibody is purified through a protein A column, followed by peptide affinity purification.
Suggested Dilutions	WB: 1:500-1000

IHC-P-Leica: 1:500
FC: 1:25

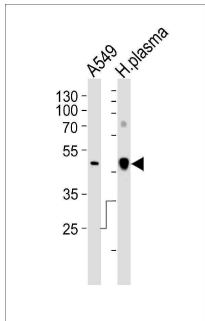
Anti-CLU Antibody (N-term) (A00590-2) Images



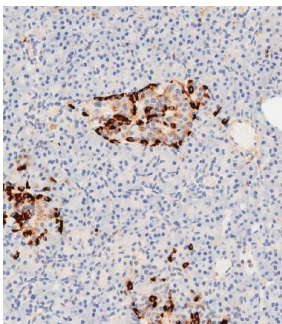
All lanes : Anti-CLU Antibody (N-term) at 1:1000 dilution
Lane 1: HepG2 whole cell lysate
Lane 2: MCF-7 whole cell lysate
Lane 3: Caco2 whole cell lysate
Lane 4: Hela whole cell lysate
Lane 5: A549 whole cell lysate
Lysates/proteins at 20 µg per lane. Secondary Goat Anti-Rabbit IgG, (H+L), Peroxidase conjugated at 1/10000 dilution. Predicted band size : 52 kDa
Blocking/Dilution buffer: 5% NFDm/TBST.



Western blot analysis of lysates from Hela cell line, human liver and human testis tissue lysate (from left to right), using CLU Antibody (N-term). A00590-2 was diluted at 1:1000 at each lane. A goat anti-rabbit IgG H&L(HRP) at 1:10000 dilution was used as the secondary antibody. Lysates at 35 µg per lane.

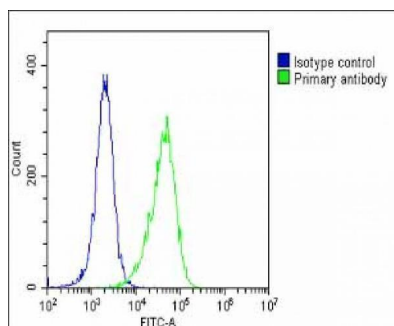


Western blot analysis of lysates from A549 cell line and human plasma tissue lysate (from left to right), using CLU Antibody (N-term). A00590-2 was diluted at 1:1000 at each lane. A goat anti-rabbit IgG H&L(HRP) at 1:10000 dilution was used as the secondary antibody. Lysates at 35 µg per lane.



Immunohistochemical analysis of paraffin-embedded human pancreas tissue using A00590-2 performed on the Leica® BOND RXm. Samples were incubated with primary antibody (1/500) for 1 hour at room temperature. An undiluted biotinylated CRF Anti-Polyvalent HRP Polymer antibody was used as the secondary antibody.

Overlay histogram showing Hela cells stained with A00590-2 (green line). The cells were fixed with 2% paraformaldehyde (10 min) and then permeabilized with 90% methanol for 10 min. The cells were then incubated in 2% bovine serum albumin to block non-specific protein-protein interactions followed by the antibody (A00590-2, 1:25 dilution) for 60 min at 37°C. The secondary antibody used was Goat-Anti-



Rabbit IgG, DyLight® 488 Conjugated Highly Cross-Adsorbed at 1/200 dilution for 40 min at 37°C. Isotype control antibody (blue line) was rabbit IgG1 (1g/1x10⁶ cells) used under the same conditions. Acquisition of >10,000 events was performed.

Submit a product review to Biocompare.com

Submit a review of this product to Biocompare.com to receive a \$20 Amazon.com giftcard! Your reviews help your fellow scientists make the right decisions. Thank you for your contribution.



Anti-CLU Antibody (N-term)

For Research Use Only. Not for use in diagnostic procedures.