

Anti-ADM/Adrenomedullin Antibody

Catalog Number: A00594

About ADM

Binds and is activated by neuregulins and NTAK.

Overview

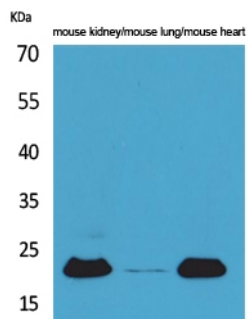
Product Name	Anti-ADM/Adrenomedullin Antibody
Reactive Species	Human, Rat
Description	Boster Bio Anti-ADM/Adrenomedullin Antibody catalog # A00594. Tested in ELISA, IHC, WB applications. This antibody reacts with Human, Rat.
Application	ELISA, IHC, WB
Clonality	Polyclonal 8H7
Formulation	Liquid in PBS containing 50% glycerol, 0.5% BSA and 0.02% sodium azide.
Storage Instructions	Store at -20°C for one year. For short term storage and frequent use, store at 4°C for up to one month. Avoid repeated freeze-thaw cycles.
Host	Rabbit
Uniprot ID	P35318

Technical Details

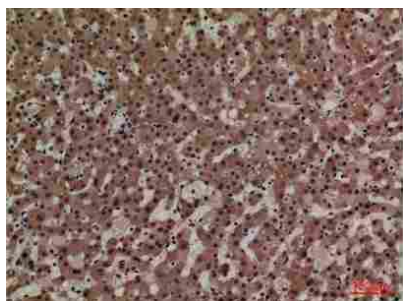
Immunogen	Synthesized peptide derived from the Internal region of human ADM.
Predicted Reactive Species	Bovine, Canine, Equine, Goat, Guinea Pig, Rabbit
Cross Reactivity	No cross reactivity with other proteins.
Isotype	IgG
Form	Liquid
Concentration	1 mg/ml
Purification	The antibody was affinity-purified from rabbit antiserum by affinity-chromatography using a epitope-specific immunogen.
Suggested Dilutions	Dilute the sample so that the expected range of concentrations fall within the detection range of this kit. If the expected range of concentration is unknown, a pilot test should be conducted to decide the optimal dilution ratio for your samples. Some PubMed article(s) citing the expression level of this target are as follows:

Boster Bio's internal QC testing used:
WB 1:500-1:2000
IHC-p 1:100-300
ELISA 1:20000

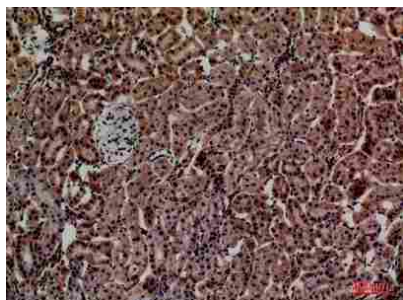
Anti-ADM/Adrenomedullin Antibody (A00594) Images



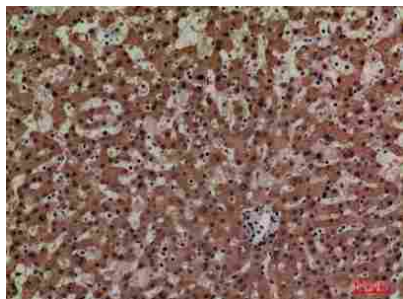
Western blot analysis of mouse kidney, mouse lung, mouse heart cells using ADM Polyclonal Antibody.. Secondary antibody was diluted at 1:20000



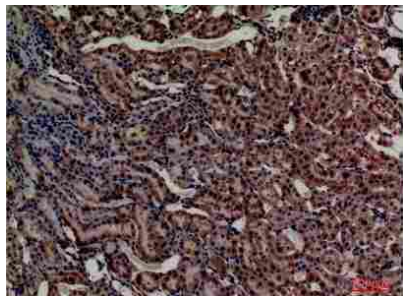
Immunohistochemistry (IHC) analysis of paraffin-embedded Human Liver, antibody was diluted at 1:100.



Immunohistochemistry (IHC) analysis of paraffin-embedded Rat Kidney, antibody was diluted at 1:100.



Immunohistochemistry (IHC) analysis of paraffin-embedded Human Liver, antibody was diluted at 1:100.



Immunohistochemistry (IHC) analysis of paraffin-embedded Rat Kidney, antibody was diluted at 1:100.

1 Publications Citing This Product

1. PubMed ID: 26622614, Expression and clinical significance of focal adhesion kinase and adrenomedullin in epithelial ovarian cancer

Visit bosterbio.com/anti-adm-antibody-a00594-boster.html to see all 1 publications.

Submit a product review to Biocompare.com

Submit a review of this product to Biocompare.com to receive a \$20 Amazon.com giftcard! Your reviews help your fellow scientists make the right decisions. Thank you for your contribution.



Anti-ADM/Adrenomedullin Antibody