

Anti-Cytochrome P450 1A2/Cyp1a2 Antibody Picoband®

Catalog Number: A00598

About Cyp1a2

CYP1A2 (Cytochrome P450, Subfamily I, Polypeptide 2) is a member of the cytochrome P450 mixed-function oxidase system and is involved in the metabolism of xenobiotics in the body. CYP1A2 is a member of the cytochrome P450 superfamily of enzymes. In humans, the CYP1A2 enzyme is encoded by the CYP1A2 gene. CYP1A2 localizes to the endoplasmic reticulum and its expression is induced by some polycyclic aromatic hydrocarbons (PAHs), some of which are found in cigarette smoke. The CYP1A2 gene encodes a P450 enzyme involved in O-deethylation of phenacetin. Ikeya et al. (1989) found that the human CYP1A2 gene spans almost 7.8 kb and contains 7 exons. The CYP1A2 gene is mapped on 15q24.1. CYP1A2 accounts for nearly 15% of the cytochrome P450 in the human liver. CYP1A2 displays higher activity in men than in women, and is inhibited by oral contraceptives. Inducers of CYP1A2 include cruciferous vegetables. Cigarette smoking has also been shown to increase CYP1A2 activity. Expression of CYP1A2 appears to be induced by various dietary constituents.

Overview

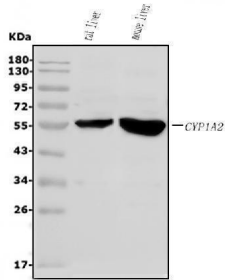
Product Name	Anti-Cytochrome P450 1A2/Cyp1a2 Antibody Picoband®
Reactive Species	Mouse, Rat
Description	Boster Bio Anti-Cytochrome P450 1A2/Cyp1a2 Antibody Picoband® catalog # A00598. Tested in ELISA, Flow Cytometry, WB applications. This antibody reacts with Mouse, Rat. The brand Picoband indicates this is a premium antibody that guarantees superior quality, high affinity, and strong signals with minimal background in Western blot applications. Only our best-performing antibodies are designated as Picoband, ensuring unmatched performance.
Application	ELISA, Flow Cytometry, WB
Clonality	Polyclonal
Formulation	Each vial contains 4mg Trehalose, 0.9mg NaCl, 0.2mg Na2HPO4, 0.01mg NaN3.
Storage Instructions	Store at -20°C for one year from date of receipt. After reconstitution, at 4°C for one month. It can also be aliquotted and stored frozen at -20°C for six months. Avoid repeated freeze-thaw cycles.
Host	Rabbit
Uniprot ID	P00186

Technical Details

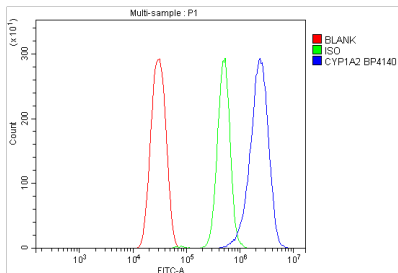
Immunogen	E.coli-derived mouse Cytochrome P450 1A2/Cyp1a2 recombinant protein (Position: H184-K513).
Recommended Detection Systems	Boster recommends Enhanced Chemiluminescent Kit with anti-Rabbit IgG (EK1002) for Western blot.
Cross Reactivity	No cross-reactivity with other proteins.
Isotype	Rabbit IgG

Form	Lyophilized
Concentration	Adding 0.2 ml of distilled water will yield a concentration of 500 ug/ml.
Purification	Immunogen affinity purified.
Suggested Dilutions	Western blot, 0.1-0.25ug/ml, Mouse, Rat Flow Cytometry (Fixed), 1-3ug/1x10 ⁶ cells, Mouse ELISA, 0.1-0.5ug/ml, -

Anti-Cytochrome P450 1A2/Cyp1a2 Antibody Picoband® (A00598) Images



Western blot analysis of Cytochrome P450 1A2/Cyp1a2 using anti-Cytochrome P450 1A2/Cyp1a2 antibody (A00598). Electrophoresis was performed on a 5-20% SDS-PAGE gel at 70V (Stacking gel) / 90V (Resolving gel) for 2-3 hours. The sample well of each lane was loaded with 50ug of sample under reducing conditions. Lane 1: rat liver tissue lysates, Lane 2: mouse liver tissue lysates. After Electrophoresis, proteins were transferred to a Nitrocellulose membrane at 150mA for 50-90 minutes. Blocked the membrane with 5% Non-fat Milk/ TBS for 1.5 hour at RT. The membrane was incubated with rabbit anti-Cytochrome P450 1A2/Cyp1a2 antigen affinity purified polyclonal antibody (Catalog # A00598) at 0.25 ug/mL overnight at 4°C, then washed with TBS-0.1%Tween 3 times with 5 minutes each and probed with a goat anti-rabbit IgG-HRP secondary antibody at a dilution of 1:5000 for 1.5 hour at RT. The signal is developed using an Enhanced Chemiluminescent detection (ECL) kit (Catalog # EK1002) with Tanon 5200 system. A specific band was detected for Cytochrome P450 1A2/Cyp1a2 at approximately 58KD. The expected band size for Cytochrome P450 1A2/Cyp1a2 is at 58KD.



Flow Cytometry analysis of HEPA1-6 cells using anti-Cytochrome P450 1A2/Cyp1a2 antibody (A00598). Overlay histogram showing HEPA1-6 cells stained with A00598 (Blue line). To facilitate intracellular staining, cells were fixed with 4% paraformaldehyde and permeabilized with permeabilization buffer. The cells were blocked with 10% normal goat serum. And then incubated with rabbit anti-Cytochrome P450 1A2/Cyp1a2 Antibody (A00598, 1ug/1x10⁶ cells) for 30 min at 20°C. DyLight®488 conjugated goat anti-rabbit IgG (BA1127, 5-10ug/1x10⁶ cells) was used as secondary antibody for 30 minutes at 20°C. Isotype control antibody (Green line) was rabbit IgG (1ug/1x10⁶) used under the same conditions. Unlabelled sample without incubation with primary antibody and secondary antibody (Red line) was used as a blank control.

Submit a product review to Biocompare.com

Submit a review of this product to Biocompare.com to receive a \$20 Amazon.com giftcard! Your reviews help your fellow scientists make the right decisions. Thank you for your contribution.



Anti-Cytochrome P450 1A2/Cyp1a2 Antibody

For Research Use Only. Not for use in diagnostic procedures.