

Anti-Phospho-Connexin 43 (S368) GJA1 Antibody

Catalog Number: A00599S368

About GJA1

Transcriptional regulator that binds to DNA as a dimer or as a tetramer, but not as a monomer. Binds to G-doublets in an A/T-rich environment; the preferred motif is a tandem repeat of 5'-ATTGGTTA-3' combined with a 5'-TTATTA-3' box. Binds to nucleosomes By similarity. Binds to chromatin and interacts selectively with histone H3 that is not methylated at 'Lys-4', not phosphorylated at 'Thr-3' and not methylated at 'Arg-2'. Functions as a sensor of histone H3 modifications that are important for the epigenetic regulation of gene expression. Functions as a transcriptional activator and promotes the expression of otherwise tissue-specific self-antigens in the thymus, which is important for self tolerance and the avoidance of autoimmune reactions.

Nagamine K., Nat. Genet. 17:393-398(1997).

Aaltonen J., Nat. Genet. 17:399-403(1997).

Hattori M., Nature 405:311-319(2000).

Overview

Product Name	Anti-Phospho-Connexin 43 (S368) GJA1 Antibody
Reactive Species	Human, Mouse, Rat
Description	Boster Bio Anti-Phospho-Connexin 43 (S368) GJA1 Antibody catalog # A00599S368. Tested in ELISA, IHC, WB applications. This antibody reacts with Human, Mouse, Rat.
Application	ELISA, IHC, WB
Clonality	Polyclonal
Formulation	Liquid in PBS containing 50% glycerol, 0.5% BSA and 0.02% sodium azide.
Storage Instructions	Store at -20°C for one year. For short term storage and frequent use, store at 4°C for up to one month. Avoid repeated freeze-thaw cycles.
Host	Rabbit
Uniprot ID	P17302

Technical Details

Immunogen	Synthesized peptide derived from human Connexin 43 around the phosphorylation site of S368.
Predicted Reactive Species	Canine, Monkey
Isotype	IgG
Form	Liquid

Concentration	1 mg/ml
Purification	The antibody was affinity-purified from rabbit antiserum by affinity-chromatography using epitope-specific immunogen.
Suggested Dilutions	<p>Dilute the sample so that the expected range of concentrations fall within the detection range of this kit.</p> <p>If the expected range of concentration is unknown, a pilot test should be conducted to decide the optimal dilution ratio for your samples.</p> <p>Some PubMed article(s) citing the expression level of this target are as follows:</p> <p>Boster Bio's internal QC testing used:</p> <p>WB 1:500-1:2000</p> <p>IHC 1:100-1:300</p> <p>ELISA 1:20000</p>

Anti-Phospho-Connexin 43 (S368) GJA1 Antibody (A00599S368) Images

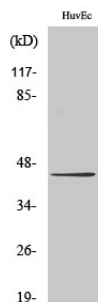


Figure 2. Western blotting validation for Anti-Phospho-Connexin 43 (S368) GJA1 Antibody A00599S368

Western Blot (WB) analysis of HuvEc cells using Phospho-Connexin 43 (S368) polyclonal antibody. Electrophoresis was performed on a SDS-PAGE gel. To determine SDS-PAGE gel concentration

Submit a product review to Biocompare.com

Submit a review of this product to Biocompare.com to receive a \$20 Amazon.com giftcard! Your reviews help your fellow scientists make the right decisions. Thank you for your contribution.



Anti-Phospho-Connexin 43 (S368) GJA1 Antibody