

## Anti-Prolactin/PRL Antibody Picoband®

Catalog Number: A00601-1

### About PRL

Prolactin (PRL) also known as luteotropic hormone (LTH) is a protein that in humans is encoded by the PRL gene. Prolactin is a peptide hormone discovered by Henry Friesen. Although it is perhaps best known for its role in lactation, prolactin already existed in the oldest known vertebrates—fishes—where its most important functions were probably related to control of water and salt balance. Prolactin also acts in a cytokine-like manner and as an important regulator of the immune system. Prolactin has important cell cycle related functions as a growth-, differentiating- and anti-apoptotic factor. As a growth factor binding to cytokine like receptors it has also profound influence on hematopoiesis, angiogenesis and is involved in the regulation of blood clotting through several pathways.

### Overview

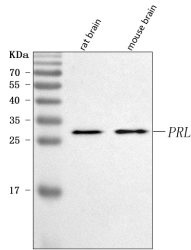
Product Name	Anti-Prolactin/PRL Antibody Picoband®
Reactive Species	Human, Mouse, Rat
Description	Boster Bio Anti-Prolactin/PRL Antibody Picoband® catalog # A00601-1. Tested in ELISA, WB applications. This antibody reacts with Human, Mouse, Rat. The brand Picoband indicates this is a premium antibody that guarantees superior quality, high affinity, and strong signals with minimal background in Western blot applications. Only our best-performing antibodies are designated as Picoband, ensuring unmatched performance.
Application	ELISA, WB
Clonality	Polyclonal
Formulation	Each vial contains 4 mg Trehalose, 0.9 mg NaCl, 0.2 mg Na <sub>2</sub> HPO <sub>4</sub> .
Storage Instructions	At -20°C for one year from date of receipt. After reconstitution, at 4°C for one month. It can also be aliquotted and stored frozen at -20°C for six months. Avoid repeated freezing and thawing.
Host	Rabbit
Uniprot ID	P01236

### Technical Details

Immunogen	E.coli-derived human Prolactin/PRL recombinant protein (Position: A36-D206).
Recommended Detection Systems	Boster recommends Enhanced Chemiluminescent Kit with anti-Rabbit IgG (EK1002) for Western blot.
Cross Reactivity	No cross-reactivity with other proteins.
Isotype	Rabbit IgG
Form	Lyophilized

Concentration	Adding 0.2 ml of distilled water will yield a concentration of 500 µg/ml.
Purification	Immunogen affinity purified.
Suggested Dilutions	Western blot, 0.25-0.5 ug/ml, Mouse, Rat ELISA, 0.1-0.5 ug/ml, -

## Anti-Prolactin/PRL Antibody Picoband® (A00601-1) Images



Western blot analysis of Prolactin/PRL using anti-Prolactin/PRL antibody (A00601-1). Electrophoresis was performed on a 5-20% SDS-PAGE gel at 70V (Stacking gel) / 90V (Resolving gel) for 2-3 hours. The sample well of each lane was loaded with 30 ug of sample under reducing conditions. Lane 1: rat brain tissue lysates, Lane 2: mouse brain tissue lysates. After electrophoresis, proteins were transferred to a nitrocellulose membrane at 150 mA for 50-90 minutes. Blocked the membrane with 5% non-fat milk/TBS for 1.5 hour at RT. The membrane was incubated with rabbit anti-Prolactin/PRL antigen affinity purified polyclonal antibody (Catalog # A00601-1) at 0.5 ug/mL overnight at 4°C, then washed with TBS-0.1%Tween 3 times with 5 minutes each and probed with a goat anti-rabbit IgG-HRP secondary antibody at a dilution of 1:5000 for 1.5 hour at RT. The signal is developed using an Enhanced Chemiluminescent detection (ECL) kit (Catalog # EK1002) with Tanon 5200 system. A specific band was detected for Prolactin/PRL at approximately 26 kDa. The expected band size for Prolactin/PRL is at 26 kDa.

### Submit a product review to [Biocompare.com](https://www.biocompare.com)

Submit a review of this product to [Biocompare.com](https://www.biocompare.com) to receive a \$20 Amazon.com giftcard! Your reviews help your fellow scientists make the right decisions. Thank you for your contribution.



### Anti-Prolactin/PRL Antibody

For Research Use Only. Not for use in diagnostic procedures.