

Anti-GAS 6/GAS6 Antibody Picoband®

Catalog Number: A00608-1

About GAS6

Growth arrest-specific 6, also known as GAS6, is a human gene coding for the Gas6 protein. It is similar to the Protein S with the same domain organization and 43% amino acid identity. It was originally found as a gene upregulated by growth arrested fibroblasts. This gene is frequently overexpressed in many cancers and has been implicated as an adverse prognostic marker. Elevated protein levels are additionally associated with a variety of disease states, including venous thromboembolic disease, systemic lupus erythematosus, chronic renal failure, and preeclampsia.

Overview

Product Name	Anti-GAS 6/GAS6 Antibody Picoband®
Reactive Species	Human, Mouse, Rat
Description	Boster Bio Anti-GAS 6/GAS6 Antibody Picoband® catalog # A00608-1. Tested in Flow Cytometry, IHC, WB applications. This antibody reacts with Human, Mouse, Rat. The brand Picoband indicates this is a premium antibody that guarantees superior quality, high affinity, and strong signals with minimal background in Western blot applications. Only our best-performing antibodies are designated as Picoband, ensuring unmatched performance.
Application	Flow Cytometry, IHC, WB
Clonality	Polyclonal
Formulation	Each vial contains 4 mg Trehalose, 0.9 mg NaCl and 0.2 mg Na ₂ HPO ₄ .
Storage Instructions	Store at -20°C for one year from date of receipt. After reconstitution, at 4°C for one month. It can also be aliquotted and stored frozen at -20°C for six months. Avoid repeated freeze-thaw cycles.
Host	Rabbit
Uniprot ID	Q14393

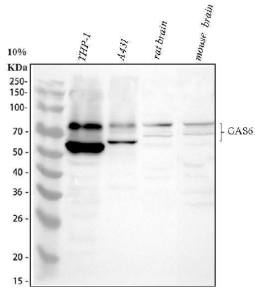
Technical Details

Immunogen	E.coli-derived human GAS 6 recombinant protein (Position: M488-S660). Human GAS 6 shares 79.7% and 81.4% amino acid (aa) sequence identity with mouse and rat GAS 6, respectively.
Cross Reactivity	No cross-reactivity with other proteins.
Isotype	Rabbit IgG
Form	Lyophilized
Concentration	Adding 0.2 ml of distilled water will yield a concentration of 500 ug/ml.
Purification	Immunogen affinity purified.

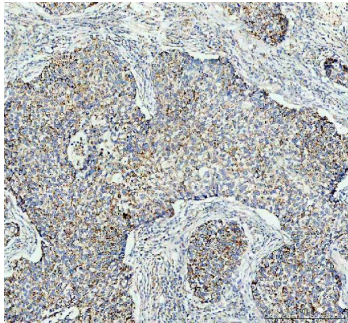
Suggested Dilutions

Western blot, 0.1-0.5ug/ml, Human, Mouse, Rat
Immunohistochemistry (Paraffin-embedded Section), 2-5ug/ml, Human
Flow Cytometry (Fixed), 1-3ug/1x10⁶ cells, Human

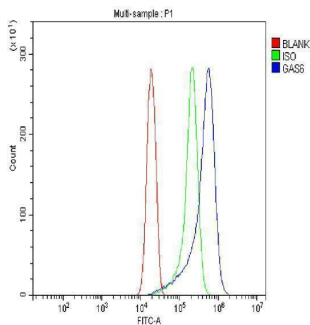
Anti-GAS 6/GAS6 Antibody Picoband® (A00608-1) Images



Western blot analysis of GAS6 using anti-GAS6 antibody (A00608-1). Electrophoresis was performed on a 10% SDS-PAGE gel at 80V (Stacking gel) / 120V (Resolving gel) for 2 hours. The sample well of each lane was loaded with 30 ug of sample under reducing conditions. Lane 1: human THP-1 whole cell lysates, Lane 2: human A431 whole cell lysates, Lane 3: rat brain tissue lysates, Lane 4: mouse brain tissue lysates. After electrophoresis, proteins were transferred to a nitrocellulose membrane at 150 mA for 50-90 minutes. Blocked the membrane with 5% non-fat milk/TBS for 1.5 hour at RT. The membrane was incubated with rabbit anti-GAS6 antigen affinity purified polyclonal antibody (A00608-1) at 0.5 ug/mL overnight at 4°C, then washed with TBS-0.1%Tween 3 times with 5 minutes each and probed with a goat anti-rabbit IgG-HRP secondary antibody (Catalog # BA1054) at a dilution of 1:5000 for 1.5 hour at RT. The signal is developed using an ECL Plus Western Blotting Substrate (Catalog # AR1196-200) with Tanon 5200 system. A specific band was detected for GAS6 at approximately 55, 79 kDa. The expected band size for GAS6 is at 79 kDa.



IHC analysis of GAS6 using anti-GAS6 antibody (A00608-1). GAS6 was detected in a paraffin-embedded section of human lung cancer tissue. Heat mediated antigen retrieval was performed in EDTA buffer (pH 8.0, epitope retrieval solution). The tissue section was blocked with 10% goat serum. The tissue section was then incubated with 2 ug/ml rabbit anti-GAS6 Antibody (A00608-1) overnight at 4°C. Peroxidase Conjugated Goat Anti-rabbit IgG was used as secondary antibody and incubated for 30 minutes at 37°C. The tissue section was developed using HRP Conjugated Rabbit IgG Super Vision Assay Kit (Catalog # SV0002) with DAB as the chromogen.



Flow Cytometry analysis of THP-1 cells using anti-GAS6 antibody (A00608-1). Overlay histogram showing THP-1 cells stained with A00608-1 (Blue line). The cells were fixed with 4% paraformaldehyde and blocked with 10% normal goat serum. And then incubated with rabbit anti-GAS6 Antibody (A00608-1, 1 ug/1x10⁶ cells) for 30 min at 20°C. DyLight®488 conjugated goat anti-rabbit IgG (BA1127, 5-10 ug/1x10⁶ cells) was used as secondary antibody for 30 minutes at 20°C. Isotype control antibody (Green line) was rabbit IgG (1 ug/1x10⁶) used under the same conditions. Unlabelled sample without incubation with primary antibody and secondary antibody (Red line) was used as a blank control.

1 Publications Citing This Product

1. PubMed ID: -, Chun Wang, Bin Wang, Maimaiti Aili, Shixia Huo, Meng-ting Han, Silafu Aibai, Zhi-Jian Li, "Effect of Artemisia rupestris L. Extract on Gastrointestinal Hormones and Brain-Gut Peptides in Functional Dyspepsia Rats", Evidence-Based Complementary and Alternative M

Visit bosterbio.com/anti-gas-6-picoband-trade-antibody-a00608-1-boster.html to see all 1 publications.

Submit a product review to Biocompare.com

Submit a review of this product to Biocompare.com to receive a \$20 Amazon.com giftcard! Your reviews help your fellow scientists make the right decisions. Thank you for your contribution.



Anti-GAS 6/GAS6 Antibody

For Research Use Only. Not for use in diagnostic procedures.