

Anti-SRY Antibody

Catalog Number: A00614

About SRY

Binds and is activated by neuregulins and NTAK.

Overview

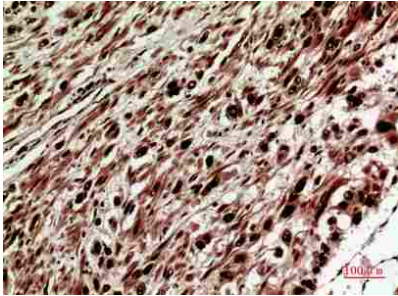
Product Name	Anti-SRY Antibody
Reactive Species	Human
Description	Boster Bio Anti-SRY Antibody catalog # A00614. Tested in IHC, WB applications. This antibody reacts with Human.
Application	IHC, WB
Clonality	Polyclonal 8H7
Formulation	Liquid in PBS containing 50% glycerol, 0.5% BSA and 0.02% sodium azide.
Storage Instructions	Store at -20°C for one year. For short term storage and frequent use, store at 4°C for up to one month. Avoid repeated freeze-thaw cycles.
Host	Rabbit
Uniprot ID	Q05066

Technical Details

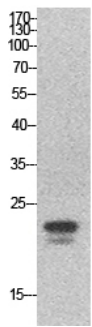
Immunogen	Synthesized peptide derived from the Internal region of human SRY.
Predicted Reactive Species	Canine
Cross Reactivity	No cross reactivity with other proteins.
Isotype	IgG
Form	Liquid
Concentration	1 mg/mL.
Purification	Immunogen affinity purified
Suggested Dilutions	Dilute the sample so that the expected range of concentrations fall within the detection range of this kit. If the expected range of concentration is unknown, a pilot test should be conducted to decide the optimal dilution ratio for your samples. Some PubMed article(s) citing the expression level of this target are as follows: Boster Bio's internal QC testing used:

	WB, 1:500-1:2000 IHC-P, 1:100-1:300
--	--

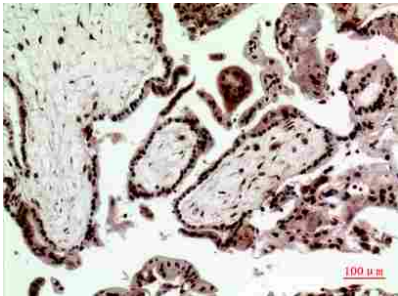
Anti-SRY Antibody (A00614) Images



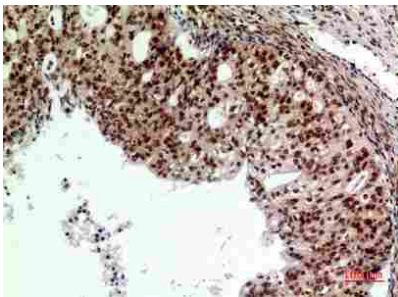
Immunohistochemistry (IHC) analysis of paraffin-embedded Human Cervical Cancer, antibody was diluted at 1:100.



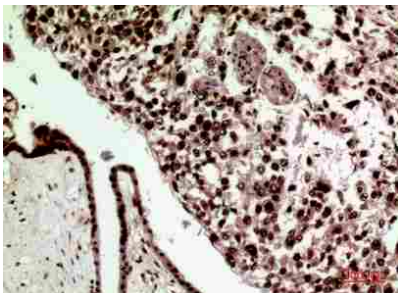
Western Blot (WB) analysis of HeLa cells using SRY Polyclonal antibody.



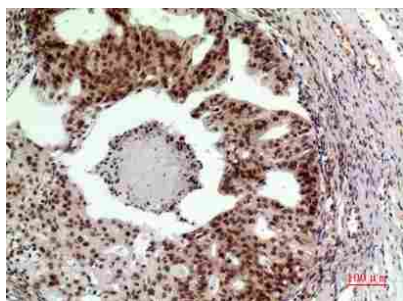
Immunohistochemistry (IHC) analysis of paraffin-embedded Human Cervical Cancer, antibody was diluted at 1:100.



Immunohistochemistry (IHC) analysis of paraffin-embedded Human Ovarian Cancer, antibody was diluted at 1:100.



Immunohistochemistry (IHC) analysis of paraffin-embedded Human Cervical Cancer, antibody was diluted at 1:100.



Immunohistochemistry (IHC) analysis of paraffin-embedded Human Ovarian Cancer, antibody was diluted at 1:100.

Submit a product review to Biocompare.com

Submit a review of this product to Biocompare.com to receive a \$20 Amazon.com giftcard! Your reviews help your fellow scientists make the right decisions. Thank you for your contribution.



Anti-SRY Antibody