

## Anti-CYP17A1 (N249) Antibody

Catalog Number: A00615

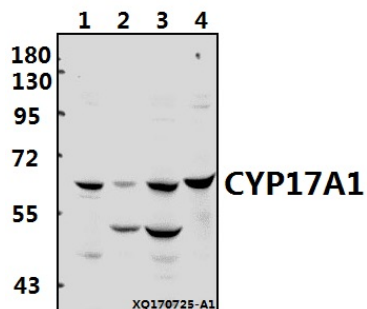
### Overview

Product Name	Anti-CYP17A1 (N249) Antibody
Reactive Species	Human
Description	Boster Bio Anti-CYP17A1 (N249) Antibody catalog # A00615. Tested in WB,IHC,IF applications. This antibody reacts with Human.
Application	IF, IHC, WB
Clonality	Polyclonal
Formulation	Rabbit IgG, 1mg/ml in PBS with 0.02% sodium azide, 50% glycerol, pH7.2
Storage Instructions	Store at -20°C for one year. For short term storage and frequent use, store at 4°C for up to one month. Avoid repeated freeze-thaw cycles.
Host	Rabbit
Uniprot ID	P05093

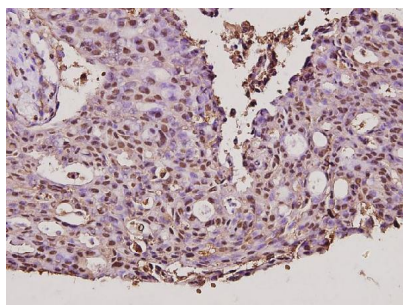
### Technical Details

Immunogen	Synthetic peptide, corresponding to amino acids 211-260 of Human CYP17A1.
Cross Reactivity	No cross reactivity with other proteins.
Isotype	IgG
Form	Liquid
Concentration	1 mg/ml
Purification	The antibody was affinity-purified from rabbit antiserum by affinity-chromatography using epitope-specific immunogen and the purity is > 95% (by SDS-PAGE).
Suggested Dilutions	WB: 1:500-1:1000 IHC: 1:50-1:200 IF: 1:50-1:200

## Anti-CYP17A1 (N249) Antibody (A00615) Images



Western blot (WB) analysis of CYP17A1 (N249) pAb at 1:500 dilution. Lane 1: MCF-7 whole cell lysate (40ug), Lane 2: A2780 whole cell lysate (40ug), Lane 3: PC3 whole cell lysate (40ug), Lane 4: HEK293T whole cell lysate (40ug).



Immunohistochemistry (IHC) analysis of CYP17A1 (N249) pAb in paraffin-embedded human breast carcinoma tissue at 1:100.

### Submit a product review to Biocompare.com

Submit a review of this product to Biocompare.com to receive a \$20 Amazon.com giftcard! Your reviews help your fellow scientists make the right decisions. Thank you for your contribution.



Anti-CYP17A1 (N249) Antibody

For Research Use Only. Not for use in diagnostic procedures.